

Grid Installation ..... 2

1x1 Center Tile Installation (**GF** Mount) ..... 3

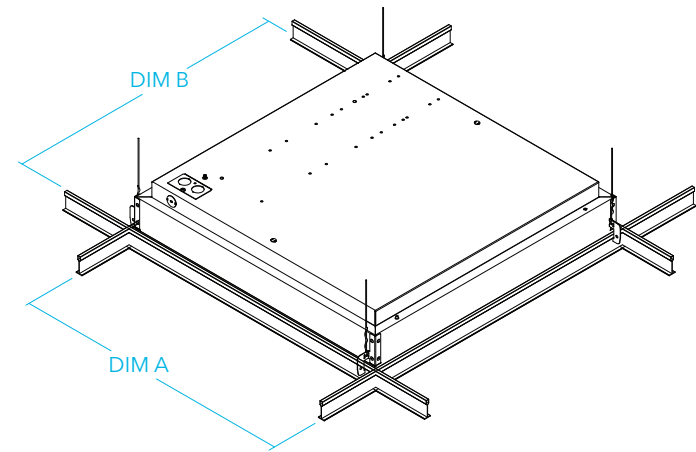
Flanged Installation ..... 4 - 5

Spackle Flange Installation ..... 6 - 7



1 CEILING PREPARATION AND INSTALLATION

Prepare ceiling grid and tile based on the dimensions and weight shown below in the charts. To install the fixture position fixture up through grid opening lower fixture so fixture flanges rest on T-Grid. Tie off fixture to structure with retention wires (by others).

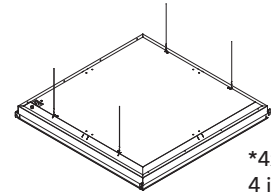


Grid Prep Dimensions

Fixture	DIM A	DIM B
1x1	12"	12"
1x2	12"	24"
1x4	12"	48"
2x2	24"	24"
2x4	24"	48"
4x4	48"	48"

Max Fixture Weight

Fixture	Weight
1x1	10lbs.
1x2	16lbs.
1x4	27lbs.
2x2	25lbs.
2x4	45lbs.
4x4	94lbs.

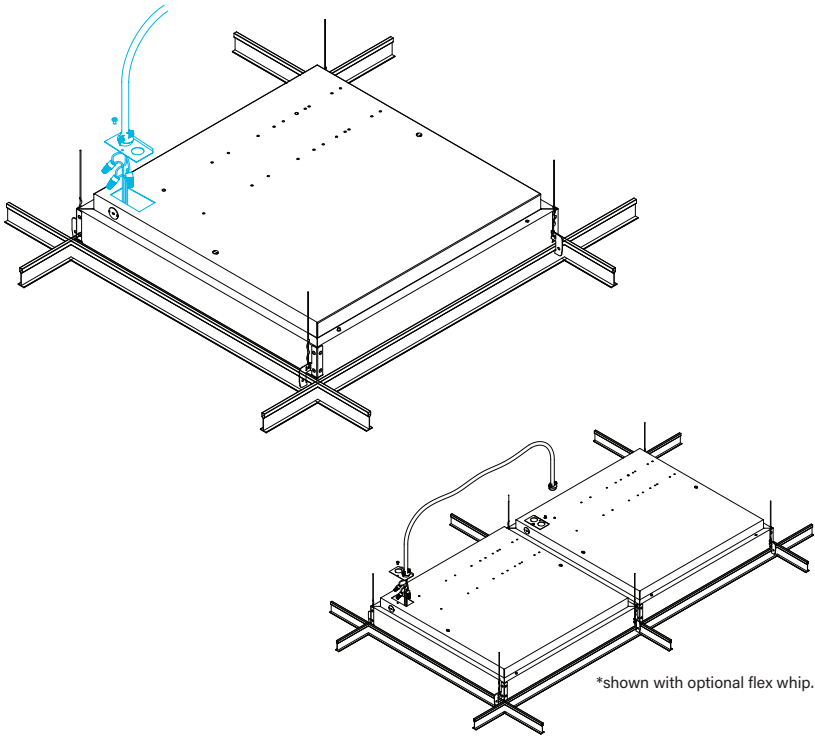


\*4x4 fixtures use  
4 inside tie offs\*

tie offs on grid retention arms are optional

2 POWER

Remove electrical cover, remove knockout, attach building supplied conduit. Make electrical connections, recess wires into fixture cavity and re-attach cover.



\*shown with optional flex whip.

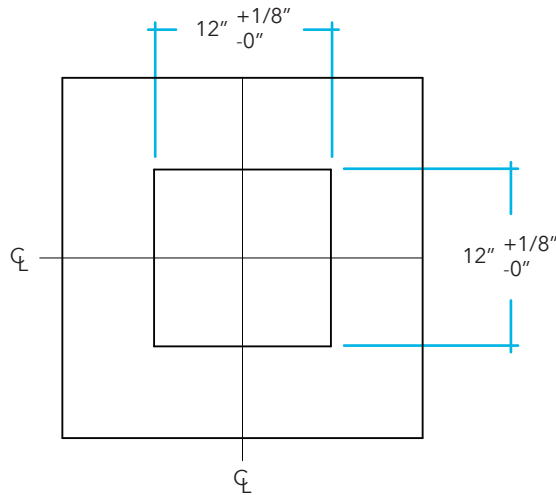
Through-wiring Option

Fixtures are shipped with knock out removed and wires for joining fixtures extended from housing Pull wiring from fixture 1 into fixture 2. Make wiring connections in fixture 2.



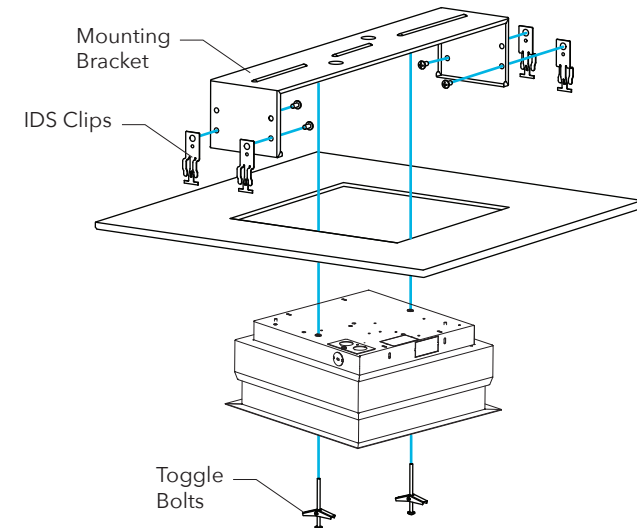
## 1 MOUNTING PREP

Install IDS clips on T-grid 9-3/8" from inner side of grid and 3" apart. Cut out center of ceiling tile as shown. Install mounting bracket with (4) 1/4-20x1/2 bolts through IDS clips.



## 2 MOUNTING

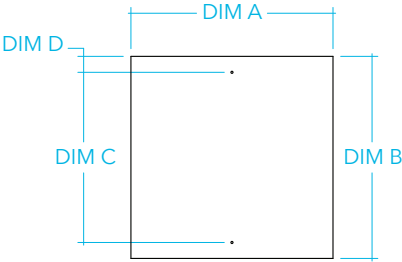
Lift and shift fixture through opening in tile and secure by pushing toggle bolt through mounting bracket holes until the toggle snaps open. Pull back on screw to keep the wings from spinning while you tighten the screw. Tighten until flanges are flush with tile. Remove electrical cover, remove knockout, attach building supplied conduit. Make electrical connections, recess wires into fixture cavity and attach cover. Install the lens by inserting one corner and gently bend to allow the other end of the lens to fit inside of the fixture.



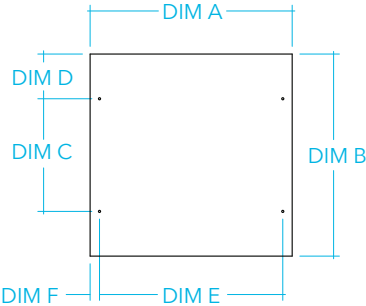


1 CEILING PREPARATION

Install proper support to structure in ceiling/wall to hold fixture weight (see weight chart). Install J-Box (by others) and whip out below ceiling level.



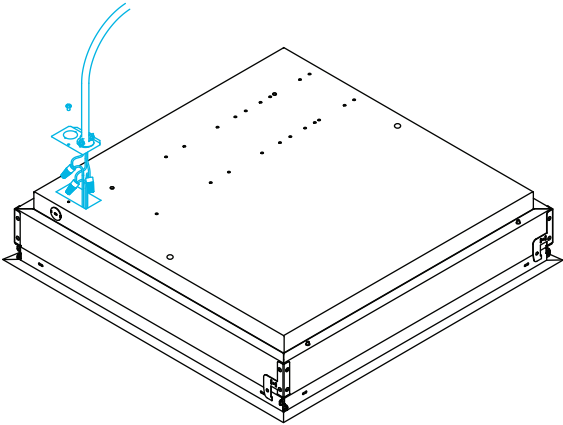
Rough in dimensions  
and mount locations  
for 1x1, 1x2, 1x4, 2x2 & 2x4



Rough in dimensions  
and mount locations  
for 4x4

2 POWER

Remove electrical cover and knockout attach building supplied conduit. Make electrical connections, recess wires into fixture cavity and re-attach electrical cover.



Rough In Dimensions

Fixture	DIM A	DIM B	DIM C	DIM D	DIM E	DIM F
1x1	12"	12"	8"	2"	N/A	N/A
1x2	12"	24"	20-5/8"	1-3/4"	N/A	N/A
1x4	12"	48"	44"	2"	N/A	N/A
2x2	24"	24"	20"	2"	N/A	N/A
2x4	24"	48"	42-1/2"	2-3/4"	N/A	N/A
4x4	48"	48"	23-1/2"	12-1/4"	42"	2-3/4"

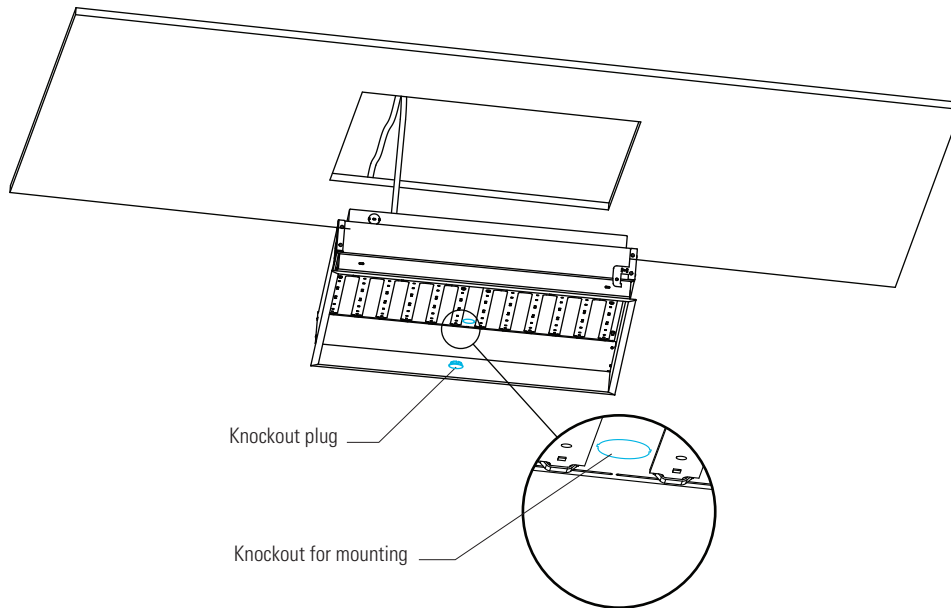
Max Fixture Weight

Fixture	Weight
1x1	10lbs.
1x2	16lbs.
1x4	27lbs.
2x2	25lbs.
2x4	45lbs.
4x4	94lbs.



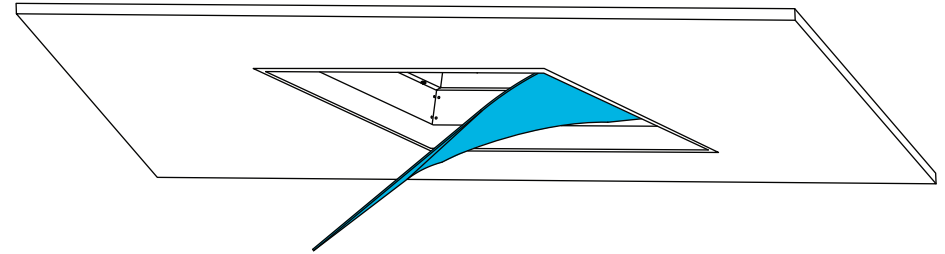
## 1 MOUNTING

Knock out mounting holes, mount fixture to support with appropriate 1/4-20 hardware (by others). Tighten mounting until fixture is level with ceiling.



## 2 LENS INSTALLATION

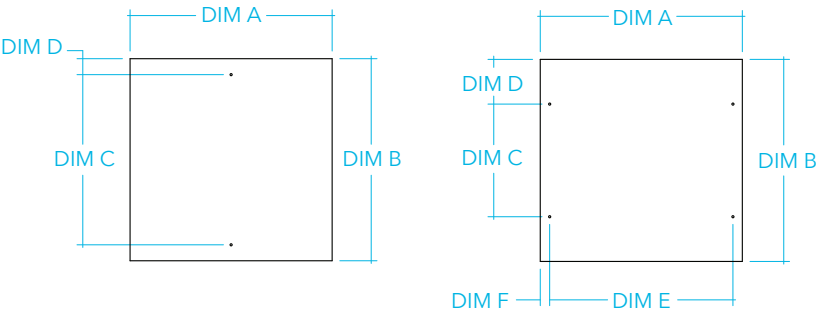
Install the lens. Insert one corner and gently bend the lens so each corner snaps into the housing.





1 GRID PREPARATION AND INSTALLATION

Install proper support to structure in ceiling/wall to hold fixture weight (see weight chart). Install J-Box (by others) and whip out below ceiling level.



Rough in dimensions  
and mount locations  
for 1x1, 1x2, 1x4, 2x2 & 2x4

Rough in dimensions  
and mount locations  
for 4x4

Rough In Dimensions

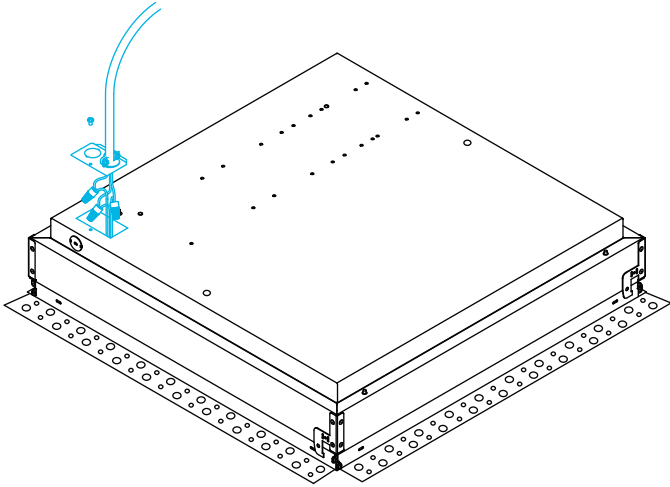
Fixture	DIM A	DIM B	DIM C	DIM D	DIM E	DIM F
1x1	12"	12"	8"	2"	N/A	N/A
1x2	12"	24"	20-5/8"	1-3/4"	N/A	N/A
1x4	12"	48"	44"	2"	N/A	N/A
2x2	24"	24"	20"	2"	N/A	N/A
2x4	24"	48"	42-1/2"	2-3/4"	N/A	N/A
4x4	48"	48"	23-1/2"	12-1/4"	42"	2-3/4"

Max Fixture Weight

Fixture	Weight
1x1	10lbs.
1x2	16lbs.
1x4	27lbs.
2x2	25lbs.
2x4	45lbs.
4x4	94lbs.

2 POWER

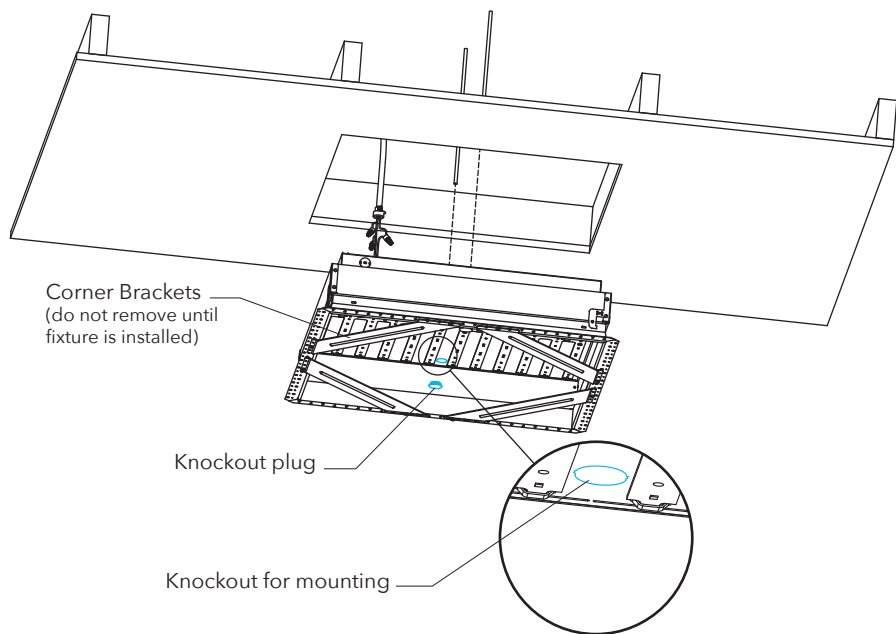
Remove electrical cover and knockout attach building supplied conduit. Make electrical connections recess wires into fixture cavity and re-attach electrical cover.





## 1 INSTALLATION

Knock out mounting holes, mount fixture to support with appropriate 1/4-20 hardware (by others). Tighten mounting until fixture is level with ceiling. With fixture flange flush with ceiling screw flange to drywall to keep flange from shifting.



## 2 FINISHING

Remove corner brackets and discard. Install the lens, insert one corner and gently bend lense to allow other end of lens to fit inside of fixture. Mud over spackle flange to finish ceiling (Detail A)

