



10 DAY  
*QUICK* SHIP →

PINNACLE  
ARCHITECTURAL LIGHTING®

A brand of  legrand



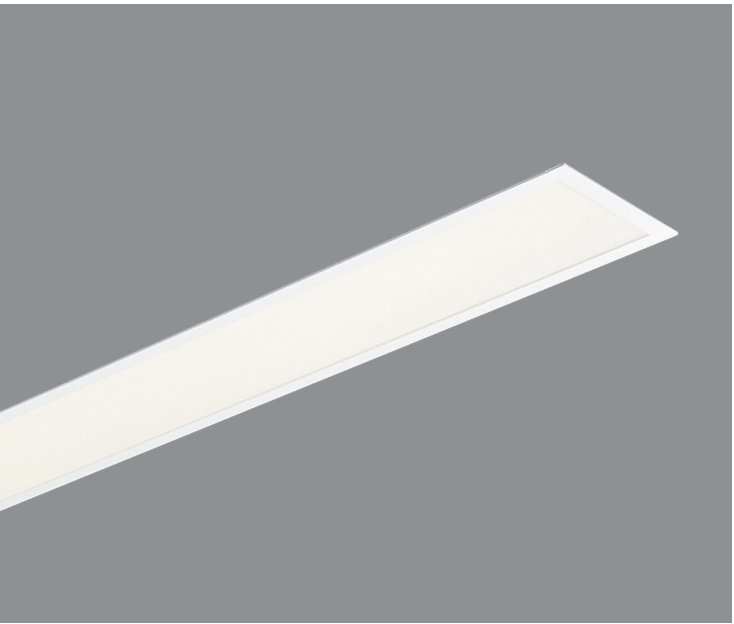


# EDGE

Sample Part # EV3D-HE-830-24'-G1-U-FSD-1-0-W-QS

QS must be listed at the end of the part number¹

EV2D / 3D / 4D



Shielding		CRI, CCT & Output²		Length or Pattern³		Mounting		Voltage		Driver		Circuiting⁴		Battery⁴		Finish		Options
A	Satine	8_____	80 CRI only. All color temperatures, all lumen packages listed on spec sheet	_	Individual Fixture	G1(G)	1" T-Bar	U	Universal (120-277)	FSD	Factory Select Driver 1%, 0-10v	1	Single Circuit	0	None	W	White	CP
HE	High			__	Cont. Row (to an 1/8")	G9(G)	9/16" T-Bar	1	120V			E	Emergency	FSB	Factory Select Battery			FIL
BW	Batwing			L_X_	L-shape	GS(G)	Screw Slot	2	277V			N	Night Light					GLR
WHE	Asymmetric	CL	Custom Lumens	R_X_	Rectangle	FL(F)	1/2" Flange											
		CW	Custom Watts	S_	Square	NF(N)	Flangeless											
				U_X_	U-shape	SF(S)	Spackle Flange											
				WC	Wall to ceiling													

All lengths and continuous rows up to 1,000 ft OR 150 individual fixtures. Consult factory for larger projects.

EVL / EVLS



CRI, CCT & Output²		Length		Mounting		Voltage		Driver		Circuiting⁴		Battery⁴		Finish		Options														
8_____	80 CRI only. All color temperatures, all lumen packages listed on spec sheet	_	Individual Fixture	G1(G)	1" T-Bar	U	Universal (120-277)	FSD	Factory Select Driver 1%, 0-10v	1	Single Circuit	0	None	W	White	CP	GLR													
																		_ _	Cont. Row(to the foot)	G9(G)	9/16" T-Bar	1	120V	E	Emergency	FSB	Factory Select Battery	N	Night Light	EF
CL	Custom Lumens			FL(F)	1/2" Flange																									
CW	Custom Watts			NF(N)	Flangeless																									
				SF(S)	Spackle Flange																									

All lengths and continuous rows up to 1,000 ft OR 150 individual fixtures. Consult factory for larger projects.



# EDGE PM

Sample Part # EV3D-HE-830-24'-G1-U-FSD-1-0-W-QS

QS must be listed at the end of the part number¹

EV2DPM / EV3DPM / EV4DPM



Housing		Shielding		CRI, CCT, Output		Length and Pattern		Mounting		Voltage		Driver		Circuiting		Battery		Finish		Fixture Options	
EV_DPM	Perimeter, Flush	A	Satine Lens	8_ _ _ _	80 CRI only. All color temperatures, all lumen packages	_	Individual Fixture	G1	1" T-Bar	U	Universal (120-277)	FSD	Factory Select Driver	1	Single Circuit	0	None	W	White	FIL	Field Cut Extension
EV_DPM2	Perimeter, 2" Regress	HE	High Efficiency Lens	CL	Custom Lumens	_ _	Cont. Row (to an 1/8")	G9	9/16" T-Bar	1	120V			E	Emergency	FSB	Factory Select Battery			CP	Chicago Plenum
EV_DPM3	Perimeter, 3" Regress	WHE	Asymmetric Lens	CW	Custom Watts	SI_	Inside Square	GS	Screw Slot	2	277V			N	Night Light					GLR	Internal Fast Blow Fuse
EV_DPM4	Perimeter 4" Regress					SO_	Outside Square	FL	1/2" Flange												
						RI_	Inside Rectangle	NF	Flangeless												
						RO_	Outside Rectangle	SF	Spackle Flange												
						UI_	Inside U shape														
						UO_	Outside U shape														
						LI_	Inside L shape														
						LO_	Outside L shape														

All lengths and continuous rows up to 1,000 ft OR 150 individual fixtures. Consult factory for larger projects.

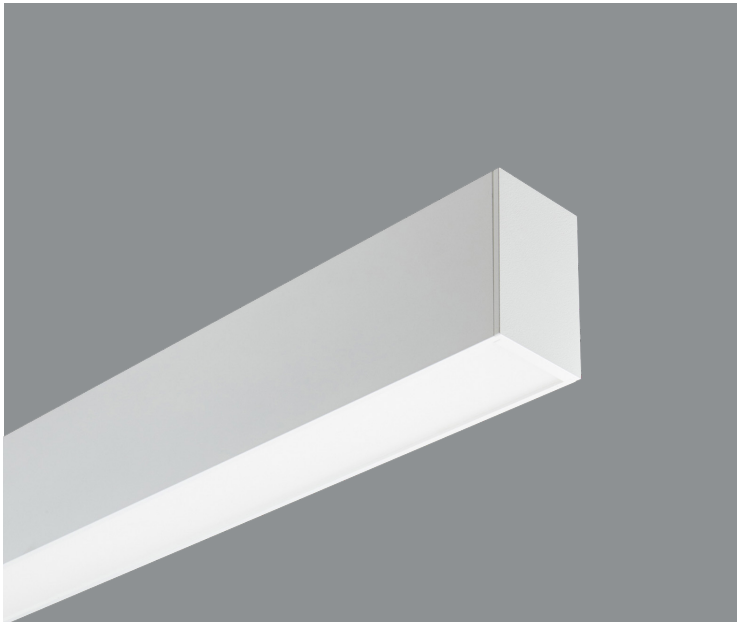


# EDGE EX

Sample Part # EX3D-HE-N-830-24'-AC48G1-U-FSD-1-0-W-QS

QS must be listed at the end of the part number¹

EX2D / 3D / 4D  
EX2DI / 3DI / 4DI  
EX2I / 3I / 4I



Direct Shielding

V	Satine
HE	High Efficiency
BW	Batwing
WHE	Asymmetric
N	None Indirect fixture only

Indirect Shielding

HE	High Efficiency
BW	Batwing
WHE	Asymmetric
N	None <small>Direct fixture only</small>

CRI, CCT & Output²

8_ _ _ _	80 CRI only. All color temperatures, all lumen packages listed on spec sheet
CL	Custom Lumens
CW	Custom Watts

Length or Pattern³

_	Individual Fixture
_ _ _	Cont. Row (to the foot)
L_X_	L-shape
R_X_	Rectangle
S_	Square
U_X_	U-shape

Mounting

(M)C48G_	Grid
(M)AC48JB	Junction Box
(M)AC48ST	Structure
WA	Wall
S	Surface

Voltage

U	Universal (120-277)
1	120V
2	277V

Driver

FSD	Factory Select Driver 1%, 0-10v
-----	---------------------------------

Circuiting⁴

1	Single Circuit
E	Emergency
N	Night Light

Battery⁴

0	None
FSB	Factory Select Battery

Finish

W	White
S	Silver
BL	Textured Black

Options

GLR	Internal Fast Blow Fuse
-----	-------------------------

¹ All lengths and continuous rows up to 1,000 ft OR 150 individual fixtures. Black QuickShip only available in 4', 6', and 8' individual lengths. Consult factory for larger projects.



# ADEO/LUCEN

## Architectural Recessed

Sample Part # AD22-A-830-G1-U-FSD-1-0-W-QS

QS must be listed at the end of the part number<sup>1</sup>

<sup>1</sup>Quick Ship items must be on their own purchase order. QS must be listed at the end of the part number to qualify for the Quick Ship timeline. Orders submitted without QS at the end of the part number will be entered with a standard lead-time. <sup>2</sup> Custom outputs are also included, but they must be between the high and low outputs listed on the Spec Sheets. <sup>3</sup> Maximum of 12 inside corners and 12 horizontal corners per Quick Ship order. <sup>4</sup> Submittal drawing required for all Battery Packs, Emergency Circuits, patterns, and continuous row configurations. <sup>5</sup> End filler option used for fitting fixture into odd lengths. Filler is non-illuminated. Left and right end filler provided with EF specified. Please consult factory for orders with more than 25 end fillers.

AD22

LU22



Shielding

**A** Satine  
**W** White rails  
(for LUCEN only)  
**S** Silver rails  
(for LUCEN only)

CRI, CCT & Output <sup>2</sup>

**8** 80 CRI only. All color temperatures, all lumen packages listed on spec sheet  
**CL** Custom Lumens  
**CW** CustomWatts

Mounting

**G1** 1" T-Bar  
**G9** 9/16" T-Bar  
**GS** Screw Slot

Voltage

**U** Universal (120-277)  
**1** 120V  
**2** 277V

Driver

**FSD** Factory Select Driver  
1%, 0-10v

Circuiting <sup>4</sup>

**1** Single Circuit  
**E** Emergency  
**N** Night Light

Battery <sup>4</sup>

**0** None  
**FSB** Factory Select Battery

Finish

**W** White

Options

**CP** Chicago Plenum  
**GLR** Internal Fast Blow Fuse  
**FW6** 6', 18-gauge, Flex Whip

All lengths and continuous rows up to 1,000 ft OR 150 individual fixtures. Consult factory for larger projects.

AD24

LU24



Shielding

**A** Satine  
**W** White rails  
(for LUCEN only)  
**S** Silver rails  
(for LUCEN only)

CRI, CCT & Output <sup>2</sup>

**8** 80 CRI only. All color temperatures, all lumen packages listed on spec sheet  
**CL** Custom Lumens  
**CW** CustomWatts

Mounting

**G1** 1" T-Bar  
**G9** 9/16" T-Bar  
**GS** Screw Slot

Voltage

**U** Universal (120-277)  
**1** 120V  
**2** 277V

Driver

**FSD** Factory Select Driver  
1%, 0-10v

Circuiting <sup>4</sup>

**1** Single Circuit  
**E** Emergency  
**N** Night Light

Battery <sup>4</sup>

**0** None  
**FSB** Factory Select Battery

Finish

**W** White

Options

**CP** Chicago Plenum  
**GLR** Internal Fast Blow Fuse  
**FW6** 6', 18-gauge, Flex Whip

All lengths and continuous rows up to 1,000 ft OR 150 individual fixtures. Consult factory for larger projects.

AD14

LU14



Shielding

**A** Satine  
**W** White rails  
(for LUCEN only)  
**S** Silver rails  
(for LUCEN only)

CRI, CCT & Output <sup>2</sup>

**8** 80 CRI only. All color temperatures, all lumen packages listed on spec sheet  
**CL** Custom Lumens  
**CW** CustomWatts

Mounting

**G1** 1" T-Bar  
**G9** 9/16" T-Bar  
**GS** Screw Slot

Voltage

**U** Universal (120-277)  
**1** 120V  
**2** 277V

Driver

**FSD** Factory Select Driver  
1%, 0-10v

Circuiting <sup>4</sup>

**1** Single Circuit  
**E** Emergency  
**N** Night Light

Battery <sup>4</sup>

**0** None  
**FSB** Factory Select Battery

Finish

**W** White

Options

**CP** Chicago Plenum  
**GLR** Internal Fast Blow Fuse  
**FW6** 6', 18-gauge, Flex Whip

All lengths and continuous rows up to 1,000 ft OR 150 individual fixtures. Consult factory for larger projects.





# TRAVERSE

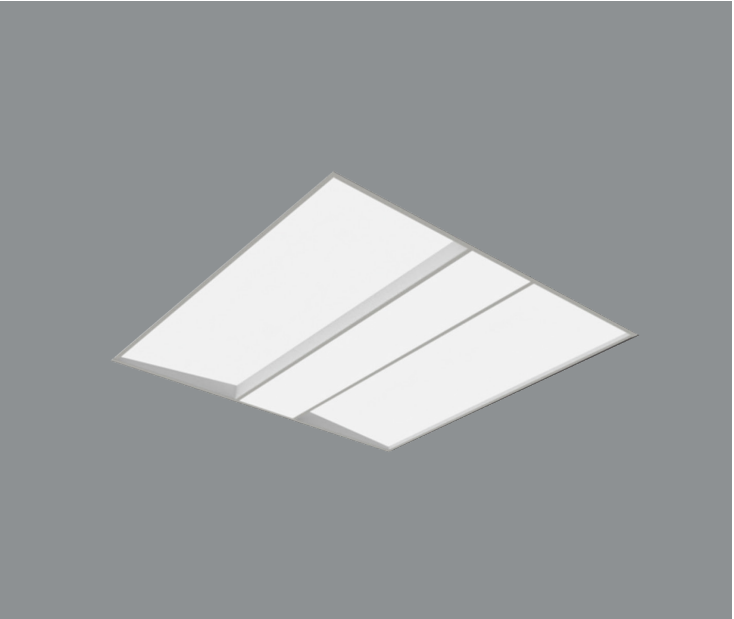
## Architectural Recessed

Sample Part # TR22-W-830-G1-U-FSD-1-0-W-QS

QS must be listed at the end of the part number<sup>1</sup>

<sup>1</sup>Quick Ship items must be on their own purchase order. QS must be listed at the end of the part number to qualify for the Quick Ship timeline. Orders submitted without QS at the end of the part number will be entered with a standard lead-time. <sup>2</sup> Custom outputs are also included, but they must be between the high and low outputs listed on the Spec Sheets. <sup>3</sup> Maximum of 12 inside corners and 12 horizontal corners per Quick Ship order. <sup>4</sup> Submittal drawing required for all Battery Packs, Emergency Circuits, patterns, and continuous row configurations. <sup>5</sup> End filler option used for fitting fixture into odd lengths. Filler is non-illuminated. Left and right end filler provided with EF specified. Please consult factory for orders with more than 25 end fillers.

TR22



Shielding

W

White rails

CRI, CCT & Output <sup>2</sup>

8

80 CRI only. All color temperatures, all lumen packages listed on spec sheet

CL

Custom Lumens

CW

CustomWatts

Mounting

G1

1" T-Bar

G9

9/16" T-Bar

GS

Screw Slot

Voltage

U

Universal (120-277)

1

120V

2

277V

Driver

FSD

Factory Select Driver  
1%, 0-10v

Circuiting <sup>4</sup>

1

Single Circuit

E

Emergency

N

Night Light

Battery <sup>4</sup>

0

None

FSB

Factory Select  
Battery

Finish

W

White

Options

CP

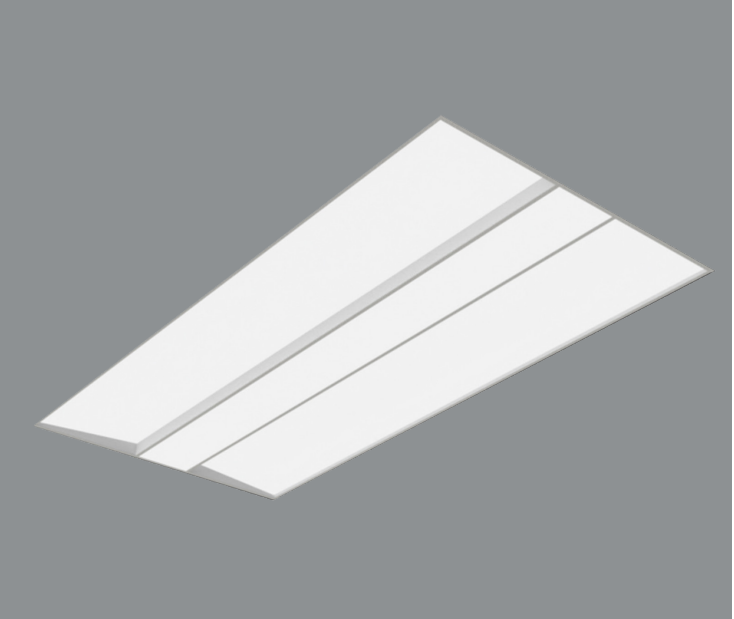
Chicago Plenum

FW6

6', 18-gauge, Flex Whip

All lengths and continuous rows up to 1,000 ft OR 150 individual fixtures. Consult factory for larger projects.

TR24



Shielding

W

White rails

CRI, CCT & Output <sup>2</sup>

8

80 CRI only. All color temperatures, all lumen packages listed on spec sheet

CL

Custom Lumens

CW

CustomWatts

Mounting

G1

1" T-Bar

G9

9/16" T-Bar

GS

Screw Slot

Voltage

U

Universal (120-277)

1

120V

2

277V

Driver

FSD

Factory Select Driver  
1%, 0-10v

Circuiting <sup>4</sup>

1

Single Circuit

E

Emergency

N

Night Light

Battery <sup>4</sup>

0

None

FSB

Factory Select  
Battery

Finish

W

White

Options

CP

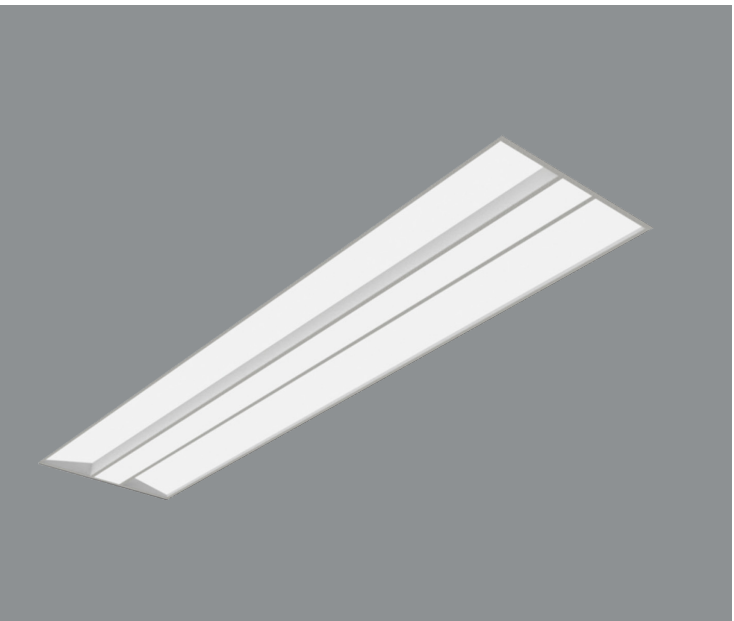
Chicago Plenum

FW6

6', 18-gauge, Flex Whip

All lengths and continuous rows up to 1,000 ft OR 150 individual fixtures. Consult factory for larger projects.

TR14



Shielding

W

White rails

CRI, CCT & Output <sup>2</sup>

8

80 CRI only. All color temperatures, all lumen packages listed on spec sheet

CL

Custom Lumens

CW

CustomWatts

Mounting

G1

1" T-Bar

G9

9/16" T-Bar

GS

Screw Slot

Voltage

U

Universal (120-277)

1

120V

2

277V

Driver

FSD

Factory Select Driver  
1%, 0-10v

Circuiting <sup>4</sup>

1

Single Circuit

E

Emergency

N

Night Light

Battery <sup>4</sup>

0

None

FSB

Factory Select  
Battery

Finish

W

White

Options

CP

Chicago Plenum

FW6

6', 18-gauge, Flex Whip

All lengths and continuous rows up to 1,000 ft OR 150 individual fixtures. Consult factory for larger projects.

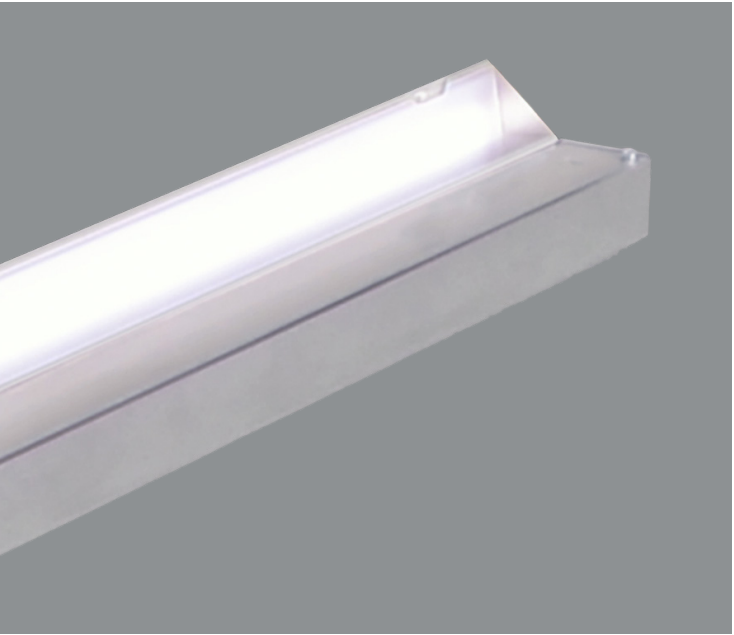


# COVE

Sample Part # C-830HO-26'-CV-U-FSD-1-0-N-QS

QS must be listed at the end of the part number\*

C



CRI, CCT & Output <sup>2</sup>		Length		Mounting		Voltage		Driver		Circuiting <sup>4</sup>		Battery <sup>4</sup>		Finish	
<b>8</b>	80 CRI only. All color temperatures, all lumen packages listed on spec sheet	—	Individual Fixture (2', 3', 4', 6', 8')	<b>CV</b>	COVE Mounting	<b>U</b>	Universal (120-277)	<b>FSD</b>	Factory Select Driver 1%, 0-10v	<b>1</b>	Single Circuit	<b>0</b>	None	<b>N</b>	Natural
<b>CL</b>	Custom Lumens	—	Cont. Row (in 1' increments)			<b>1</b>	120V			<b>E</b>	Emergency	<b>FSB</b>	Factory Select Battery		
	<b>CW</b>					Custom Watts	<b>2</b>			277V	<b>N</b>				

All lengths and continuous rows up to 1,000 ft OR 150 individual fixtures. Consult factory for larger projects.





# LINERO

Sample Part # L6DI-A-830-24'-AC48JB-U-FSD-1-0-W-QS

QS must be listed at the end of the part number¹

L6DI-A



Distribution		CRI, CCT & Output²		Length or Pattern³		Mounting		Voltage		Driver		Circuiting⁴		Battery⁴		Finish	
40	40% Direct / 60% Indirect	8_ _ _ _	80 CRI only. All color temperatures, all lumen packages listed on spec sheet	_	Individual Fixture	AC48G_	Grid	U	Universal (120-277)	FSD	Factory Select Driver 1%, 0-10v	1	Single Circuit	0	None	W	White
70	70% Direct/ 30% Indirect			_ _	Cont. Row (to the ft)	AC48JB	Junction Box Structure	1	120V			E	Emergency	FSB	Factory Select Battery		
100	100% Direct					AC48ST		2	277V			N	Night Light				
		CL	Custom Lumens														
		CW	Custom Watts														

All lengths and continuous rows up to 1,000 ft OR 150 individual fixtures. Consult factory for larger projects.

L8DI-A



Distribution		CRI, CCT & Output²		Length or Pattern³		Mounting		Voltage		Driver		Circuiting⁴		Battery⁴		Finish	
40	40% Direct / 60% Indirect	8_ _ _ _	80 CRI only. All color temperatures, all lumen packages listed on spec sheet	_	Individual Fixture	AC48G_	Grid	U	Universal (120-277)	FSD	Factory Select Driver 1%, 0-10v	1	Single Circuit	0	None	W	White
70	70% Direct/ 30% Indirect			_ _	Cont. Row (to the ft)	AC48JB	Junction Box Structure	1	120V			E	Emergency	FSB	Factory Select Battery		
100	100% Direct					AC48ST		2	277V			N	Night Light				
		CL	Custom Lumens														
		CW	Custom Watts														

All lengths and continuous rows up to 1,000 ft OR 150 individual fixtures. Consult factory for larger projects.



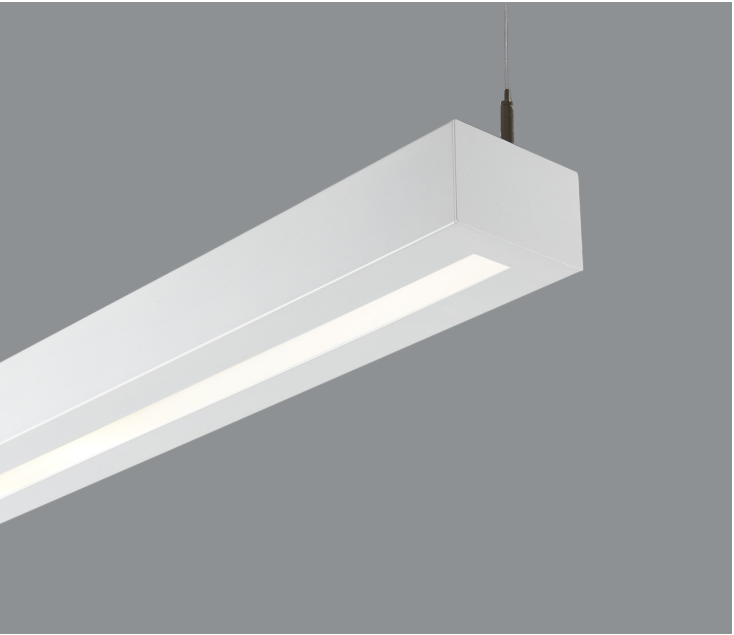
TESA

Sample Part # T4A-835VHO-16'-AC48G1-U-FSD-1-0-W-QS

QS must be listed at the end of the part number\*



T4A



Shielding	CRI, CCT & Output <sup>2</sup>	Length	Mounting	Voltage	Driver	Circuiting <sup>4</sup>	Battery <sup>4</sup>	Finish
<b>A</b> Satine	<b>8</b> 80 CRI only. All color temperatures, all lumen packages listed on spec sheet	<b>—</b> Individual Fixture (4', 8')	<b>AC48G</b> Grid	<b>U</b> Universal (120-277)	<b>FSD</b> Factory Select Driver 1%, 0-10v	<b>1</b> Single Circuit	<b>0</b> None	<b>W</b> White
	<b>CL</b> Custom Lumens	<b>--</b> Cont. Row (in 4' increments)	<b>AC48JB</b> Junction Box	<b>1</b> 120V		<b>E</b> Emergency	<b>PLL</b> Bodine 10w	
	<b>CW</b> Custom Watts		<b>AC48ST</b> Structure	<b>2</b> 277V		<b>N</b> Night Light		

All lengths and continuous rows up to 1,000 ft OR 150 individual fixtures. Consult factory for larger projects.





**P I N N A C L E**  
ARCHITECTURAL LIGHTING®

3801 Havana St. Denver CO, 80239

Phone: 303.322.5570

[www.pinnacle-ltg.com](http://www.pinnacle-ltg.com)

**March 2025**

© 2025 Pinnacle Architectural  
Lighting®

Specifications and dimensions subject to change without notice. Specification sheets and brochures that appear on [pinnacle-ltg.com](http://pinnacle-ltg.com) are the most recent version and supersede all other previously printed or electronic versions.

A brand of  **legrand®**