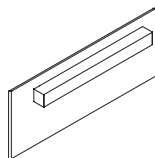
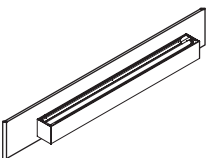


# EDGE Evolution Outline

## INSTALLATION INSTRUCTIONS

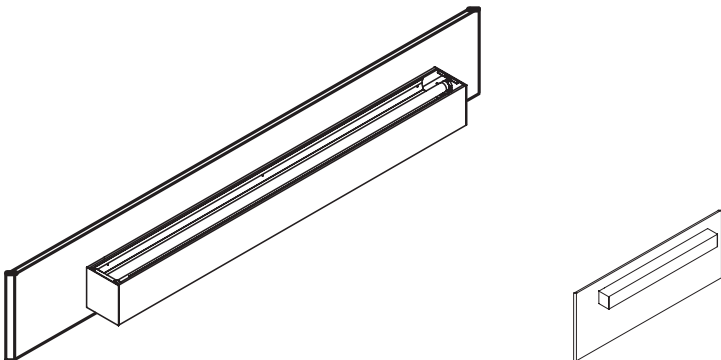
Outline Installation .....2-5

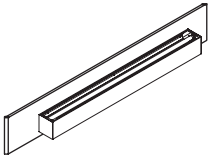
Outline End Filler Installation .....6-9



# EDGE Evolution Outline

INSTALLATION  
INSTRUCTIONS





**EDGE**  
EVOLUTION

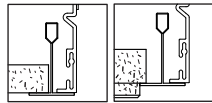
# OUTLINE Installation Instructions

**MUST BE INSTALLED PRIOR TO CEILING INSTALLATION.**

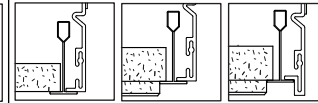
## Setup and Considerations

1. Fixture is to be installed flush with wall.
2. Fixture mounts directly to J-Bar. (See Illustration A)
3. If fixture is not full length of wall, fixture should be centered on wall and End Fillers should be used to make up the difference in length. (see End Filler installation sheet for details.)
4. J-Bar may need to be shimmed prior to fixture installation to accommodate wall inconsistencies. (See Illustration B)

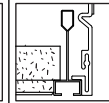
1" Grid Mounting Options



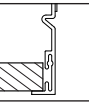
9/16" Grid Mounting Options



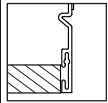
Screw Slot  
Mounting



Flange  
Detail



Non-Flange



Spackle  
Flange

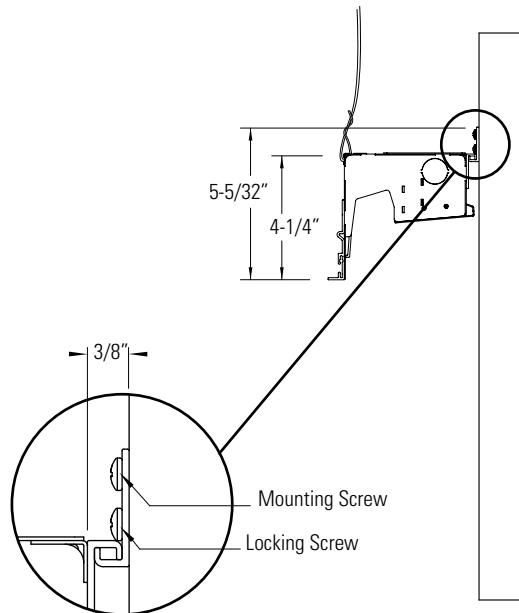
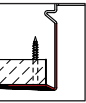
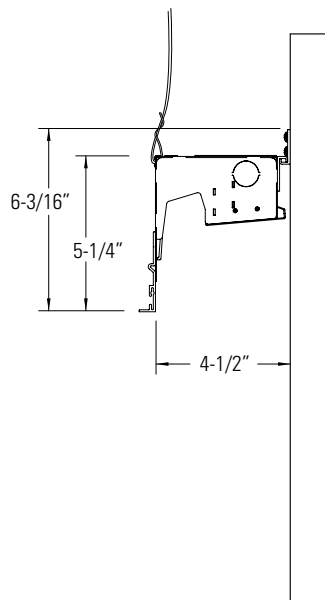
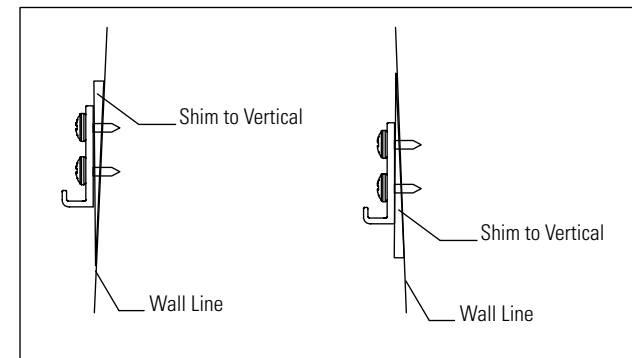


Illustration A



Shim Detail Illustration B



Designed and Fabricated in Denver Colorado

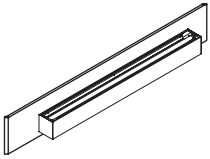
Phone: 303.322.5570

[www.pinnacle-ltg.com](http://www.pinnacle-ltg.com)

October 2014

1. This product must be installed in accordance with applicable installation and electrical codes by a professional familiar with the construction and operation of the product.
2. Minimum 90°C supply conductors
3. All electrical connections must be performed by a certified electrician to applicable local and national electrical codes.

4. Fixtures must be mounted directly to structure.
5. The holding strength of AC cables cannot be guaranteed if the cables are damaged in any way.
6. All of Pinnacle's packaging is recyclable with the exception of the straps on the pallets. Please reach out to the factory if you need assistance in recycling any packaging components.



**EDGE**  
EVOLUTION

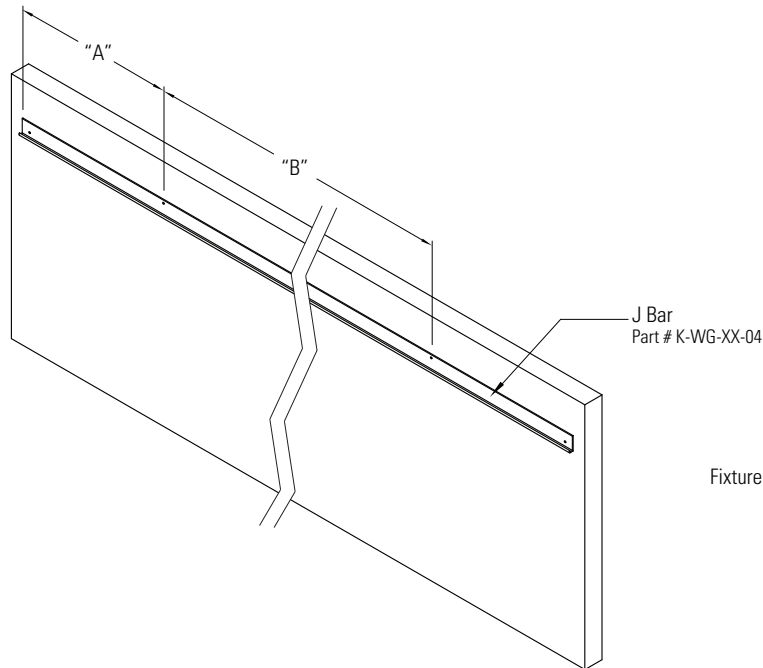
# OUTLINE Installation Instructions

**MUST BE INSTALLED PRIOR TO CEILING INSTALLATION.**

## Step 1: Wall Bracket (J Bar)

1. Attach J Bar to wall at desired mount height.
2. Use only top holes (2) for mounting J Bar to wall.

*(Note: Each J Bar has 5 screw holes. 2 upper holes for mounting J Bar and 3 lower holes for "locking" fixture to J Bar.)*

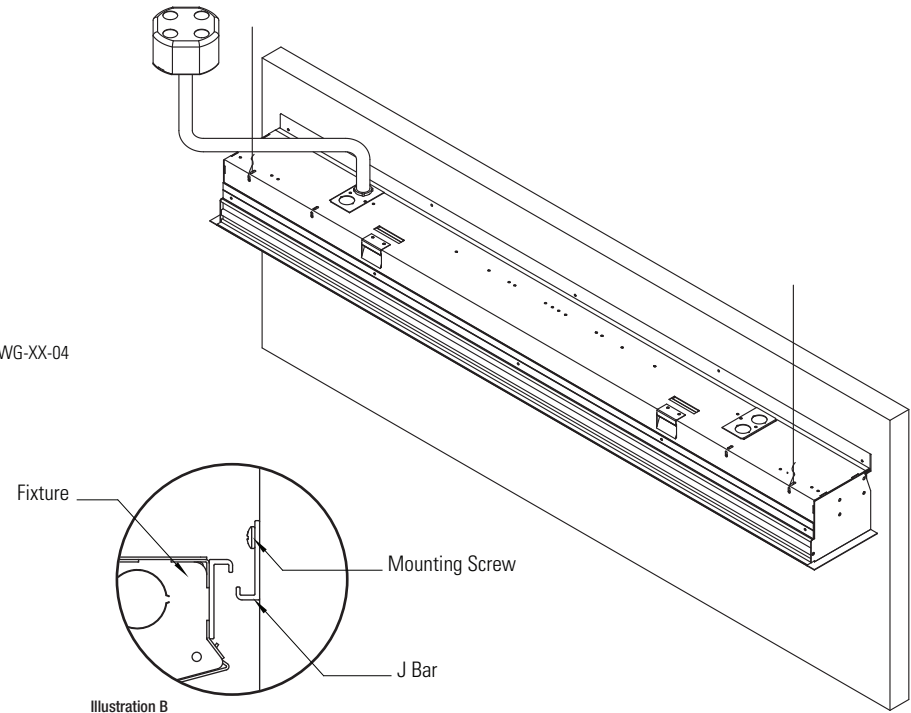


Dim "A"	Dim "B"
12-5/16"	23-3/8"

Dim "A" is from end of J Bar to first mounting hole  
Dim "B" is from mounting hole to mounting hole

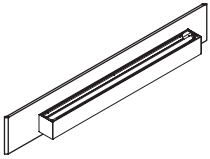
## Step 2: Installing and Wiring

1. Fixture mounts on J Bar and against wall. **See illustration B**
2. Once installed and resting in J Bar put screw into lower screw holes (3) in J Bar to "lock" fixture in. **See illustration A on pg. 1**
3. Secure and level fixture to building structure with tie offs on non wall side of housing.
4. Run building power to fixture, make necessary wire connections via access plate on top of fixture.



1. This product must be installed in accordance with applicable installation and electrical codes by a professional familiar with the construction and operation of the product.
2. Minimum 90°C supply conductors
3. All electrical connections must be performed by a certified electrician to applicable local and national electrical codes.

4. Fixtures must be mounted directly to structure.
5. The holding strength of AC cables cannot be guaranteed if the cables are damaged in any way.
6. All of Pinnacle's packaging is recyclable with the exception of the straps on the pallets. Please reach out to the factory if you need assistance in recycling any packaging components.



**EDGE**  
EVOLUTION

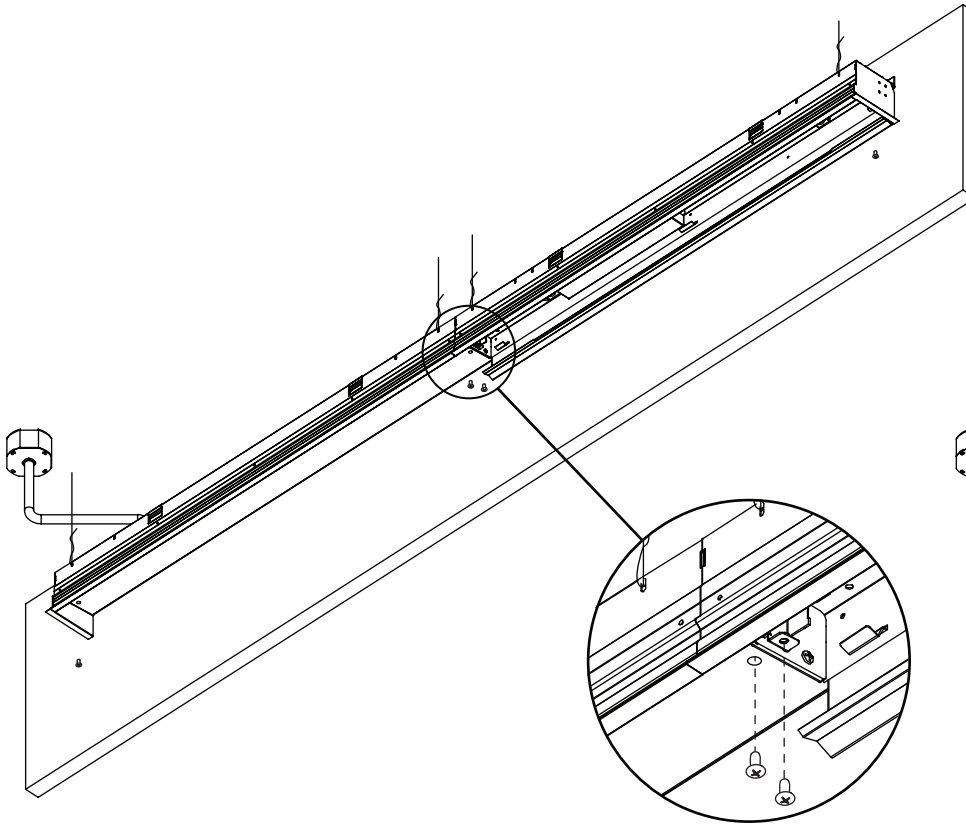
## OUTLINE Installation Instructions

**MUST BE INSTALLED PRIOR TO CEILING INSTALLATION.**

### Step 3:

#### Opening the Driver Cover

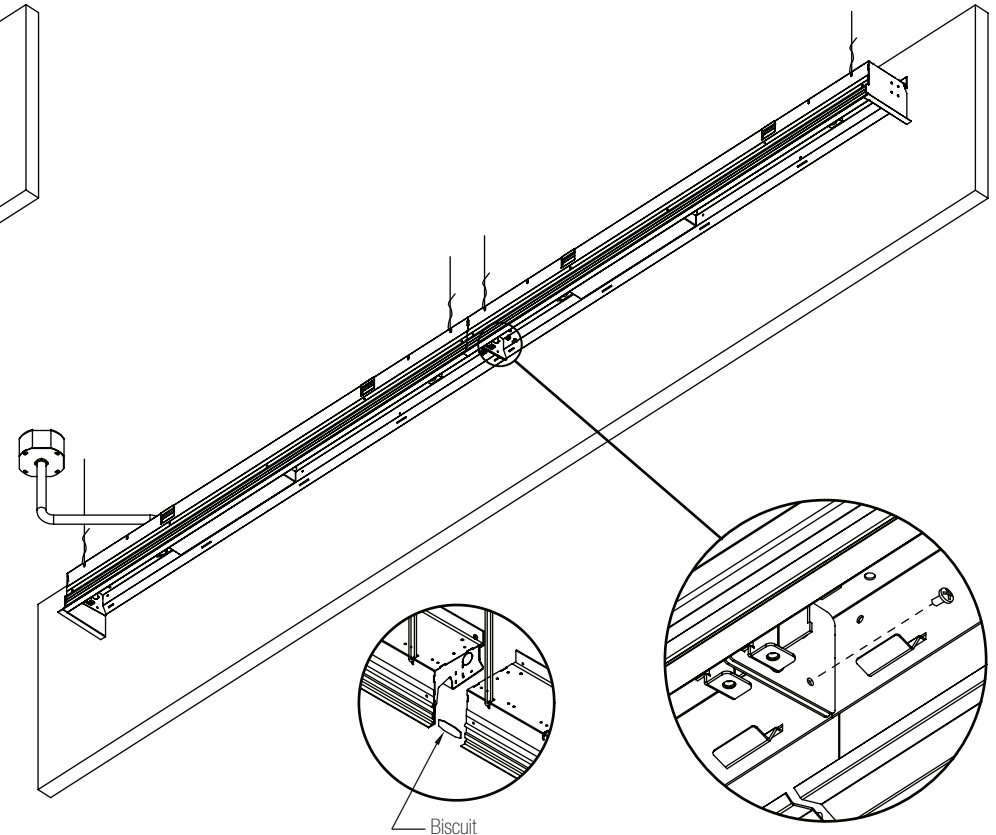
1. Open the driver cover by removing the screws in the cover, one screw per end.
2. Once the screws are removed the driver cover swings open and remains captive to the fixture.



### Step 4:

#### Joining Fixtures

1. With the driver covers open, align fixtures with joining biscuits and butt fixtures together.
2. Secure fixtures using provided screws through brackets fixture joints.

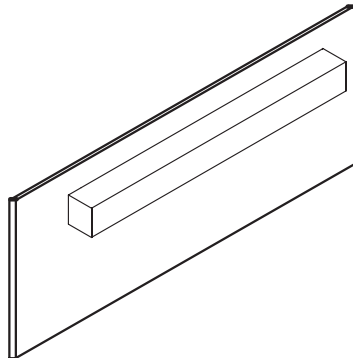
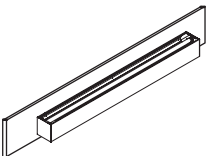


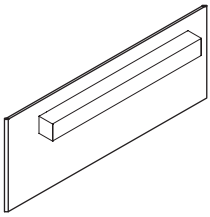
1. This product must be installed in accordance with applicable installation and electrical codes by a professional familiar with the construction and operation of the product.
2. Minimum 90°C supply conductors
3. All electrical connections must be performed by a certified electrician to applicable local and national electrical codes.

4. Fixtures must be mounted directly to structure.
5. The holding strength of AC cables cannot be guaranteed if the cables are damaged in any way.
6. All of Pinnacle's packaging is recyclable with the exception of the straps on the pallets. Please reach out to the factory if you need assistance in recycling any packaging components.

# EDGE Evolution Outline

END FILLER  
INSTALLATION



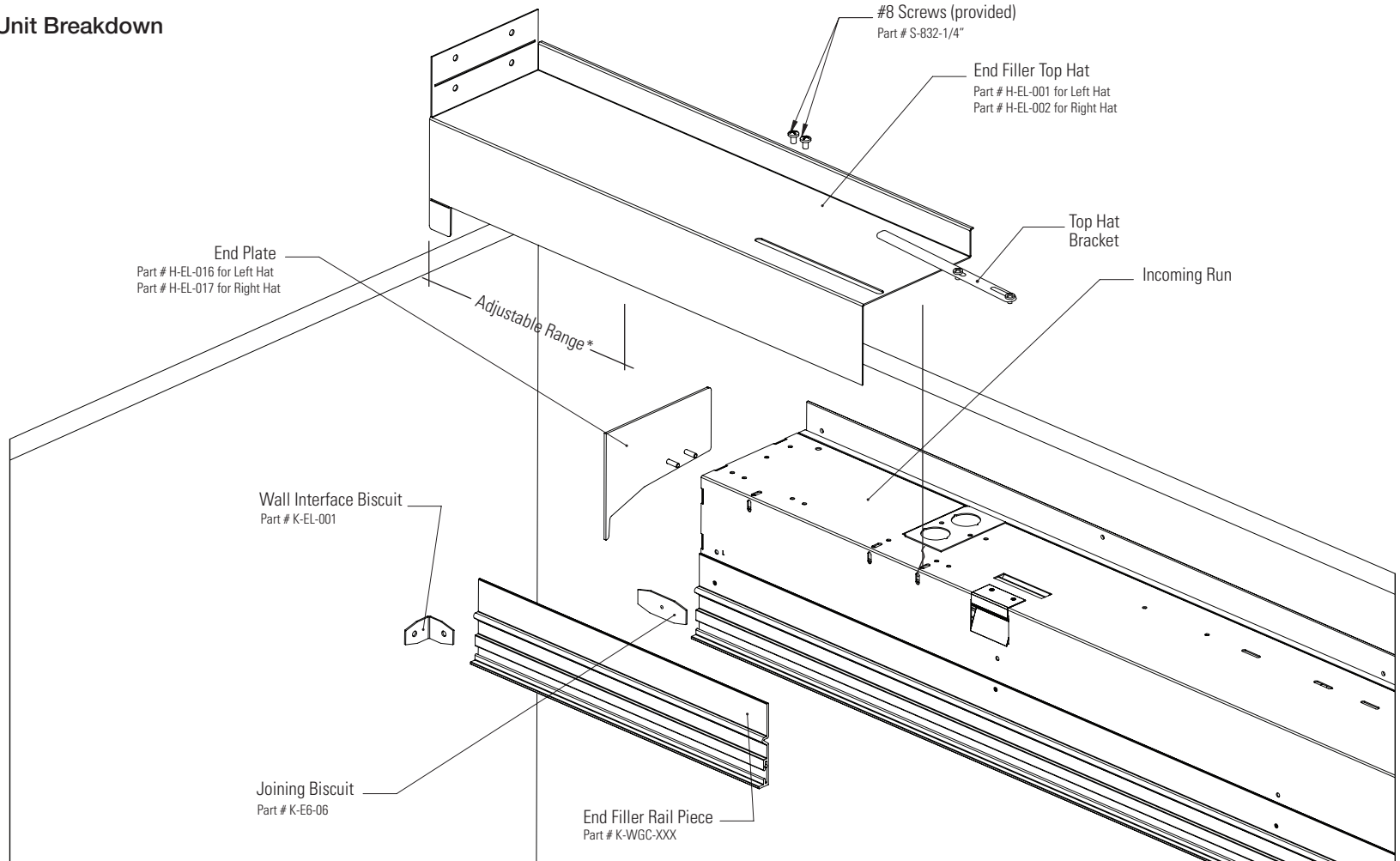


**EDGE**  
EVOLUTION

# OUTLINE End Filler Installation Instructions

**MUST BE INSTALLED PRIOR TO CEILING INSTALLATION.**

## Unit Breakdown



**\*Adjustable 1" to 12", recommended max 6"**

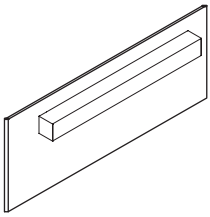
**For incoming row see EVL\_WS installation instructions**



**PINNACLE**  
ARCHITECTURAL LIGHTING®

1. This product must be installed in accordance with applicable installation and electrical codes by a professional familiar with the construction and operation of the product.
2. Minimum 90°C supply conductors
3. All electrical connections must be performed by a certified electrician to applicable local and national electrical codes.

4. Fixtures must be mounted directly to structure.
5. The holding strength of AC cables cannot be guaranteed if the cables are damaged in any way.
6. All of Pinnacle's packaging is recyclable with the exception of the straps on the pallets. Please reach out to the factory if you need assistance in recycling any packaging components.



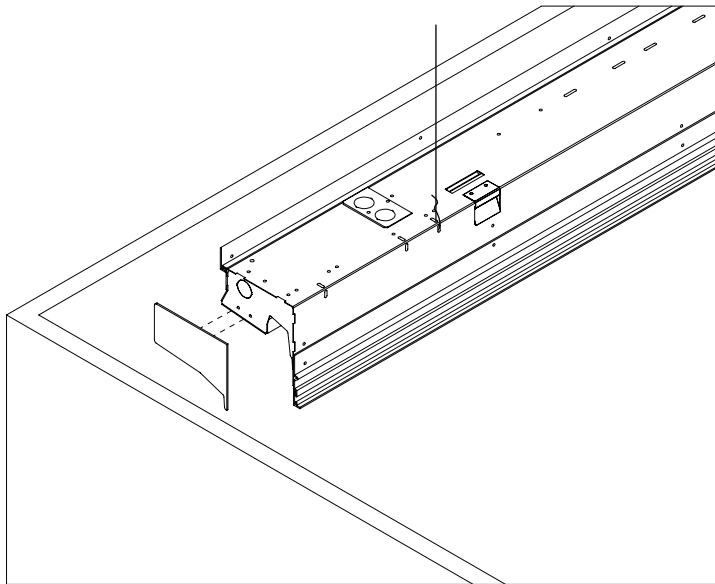
**EDGE**  
EVOLUTION

# OUTLINE End Filler Installation Instructions

**MUST BE INSTALLED PRIOR TO CEILING INSTALLATION.**

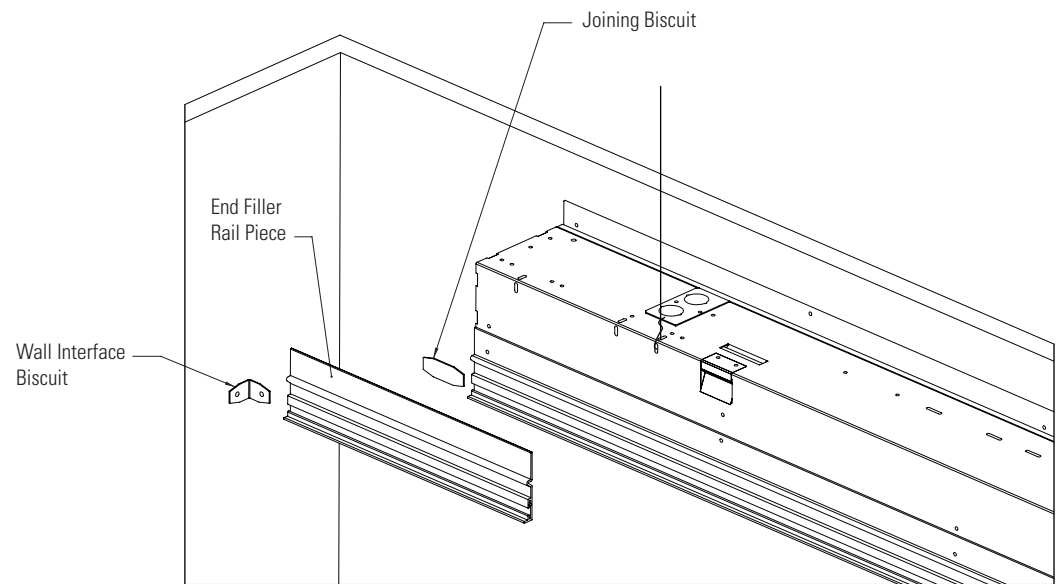
## Step 1: End Plate

1. Attach end plate through holes in end of approaching fixture and nut (provided) from inside the fixture.
2. Make sure J rail is cut back to the end of the fixture.



## Step 2: Filler Rail

1. Measure the distance from the end of the fixture to the wall.
2. Cut the End Filler Rail Piece to the above measured dimension.
3. Insert both Wall Interface Biscuit and Joining Biscuit into End Filler Piece.
4. Level End Filler Rail and slide Joining Biscuit to join the End Filler Rail to the Fixture Rail.
5. Secure the Wall Interface Biscuit to the wall with screw (by others).



Designed and Fabricated in Denver Colorado

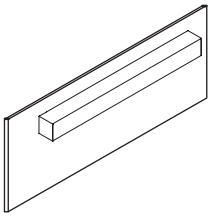
Phone: 303.322.5570

[www.pinnacle-ltg.com](http://www.pinnacle-ltg.com)

November 2014

1. This product must be installed in accordance with applicable installation and electrical codes by a professional familiar with the construction and operation of the product.
2. Minimum 90°C supply conductors
3. All electrical connections must be performed by a certified electrician to applicable local and national electrical codes.

4. Fixtures must be mounted directly to structure.
5. The holding strength of AC cables cannot be guaranteed if the cables are damaged in any way.
6. All of Pinnacle's packaging is recyclable with the exception of the straps on the pallets. Please reach out to the factory if you need assistance in recycling any packaging components.



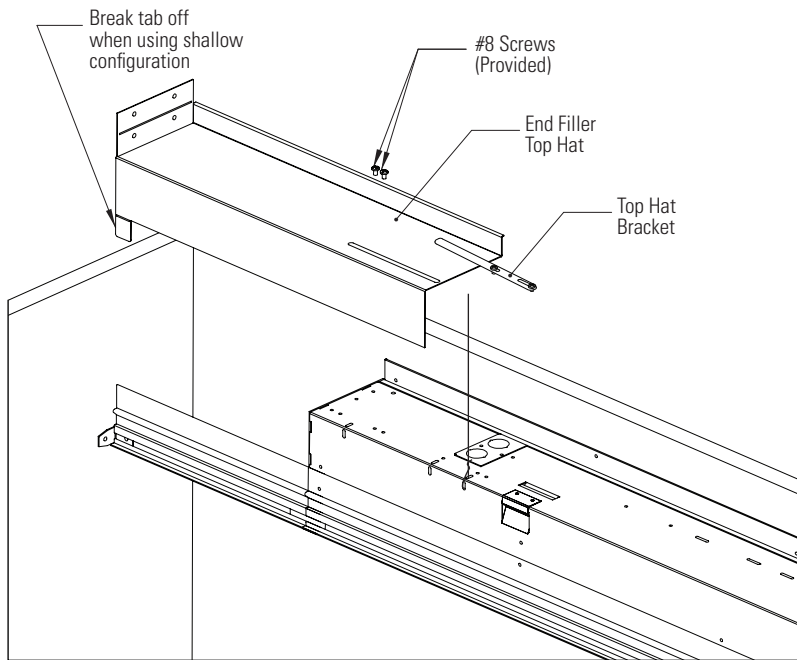
**EDGE**  
EVOLUTION

# OUTLINE End Filler Installation Instructions

**MUST BE INSTALLED PRIOR TO CEILING INSTALLATION.**

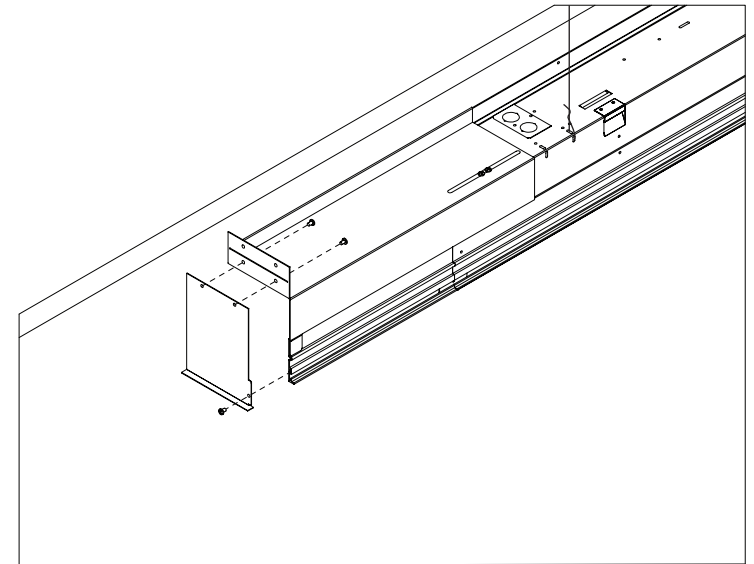
## Step 3: Top Hat

1. If electrical access is needed, trim End Filler Top Hat to needed length.
2. Place Top Hat on top of fixture and butt up to wall.
3. Attach top hat through slot using #8 screws provided. If Top Hat was trimmed, utilize Top Hat Bracket to attach Top Hat to incoming fixture
4. Screw Top Hat to wall (screws by others).



## Optional: End Trim

1. Optional End Trim used with grid, flanged, or spackle flange mounting options.
2. Secure end trim using 3 screws (provided)



Designed and Fabricated in Denver Colorado

Phone: 303.322.5570

[www.pinnacle-ltg.com](http://www.pinnacle-ltg.com)

November 2014

1. This product must be installed in accordance with applicable installation and electrical codes by a professional familiar with the construction and operation of the product.
2. Minimum 90°C supply conductors
3. All electrical connections must be performed by a certified electrician to applicable local and national electrical codes.

4. Fixtures must be mounted directly to structure.
5. The holding strength of AC cables cannot be guaranteed if the cables are damaged in any way.
6. All of Pinnacle's packaging is recyclable with the exception of the straps on the pallets. Please reach out to the factory if you need assistance in recycling any packaging components.