



10 DAY
QUICK SHIP →

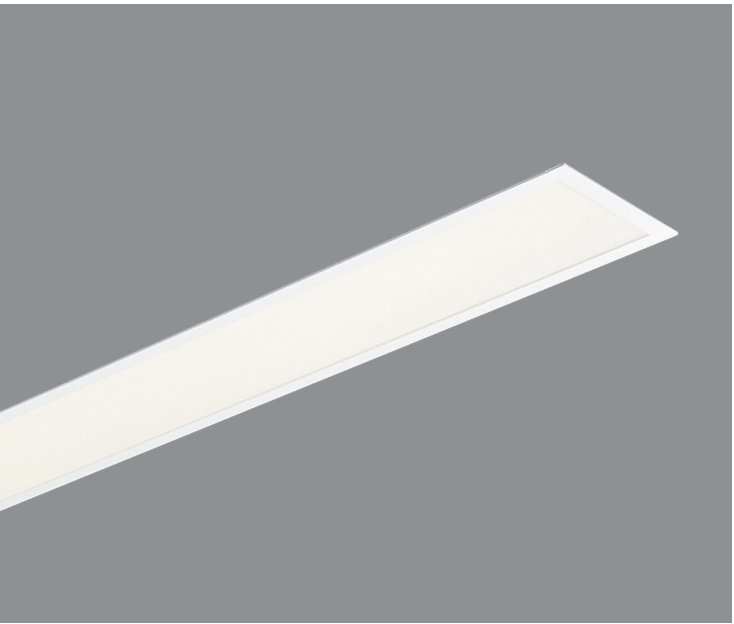


EDGE

Sample Part # EV3D-HE-830-24'-G1-U-FSD-1-0-W-QS

QS must be listed at the end of the part number¹

EV2D / 3D / 4D



Shielding		CRI, CCT & Output ²		Length or Pattern ³		Mounting		Voltage		Driver		Circuiting ⁴		Battery ⁴		Finish		Options
A	Satine	8_ _ _ _	80 CRI only. All color temperatures, all lumen packages listed on spec sheet	_	Individual Fixture	G1(G)	1" T-Bar	U	Universal (120-277)	FSD	Factory Select Driver 1%, 0-10v	1	Single Circuit	0	None	W	White	CP
HE	High			_ _	Cont. Row (to an 1/8")	G9(G)	9/16" T-Bar	1	120V	OL2	Osram 1%, 0-10v	E	Emergency	FSB	Factory Select Battery Iota 10W Integral			GLR
BW	Batwing			L_X_	L-shape	GS(G)	Screw Slot	2	277V	PL2	Advance Xitanium 1%, 0-10v	N	Night Light	IC				
WHE	Asymmetric	CL	Custom Lumens	R_X_	Rectangle	FL(F)	1/2" Flange											
		CW	Custom Watts	S_	Square	NF(N)	Flangeless											
				U_X_	U-shape	SF(S)	Spackle Flange											
				WC	Wall to ceiling													

All lengths and continuous rows up to 1,000 ft OR 150 individual fixtures. Consult factory for larger projects.

EVL / EVLS



CRI, CCT & Output ²		Length		Mounting		Voltage		Driver		Circuiting ⁴		Battery ⁴		Finish		Options
8_ _ _ _	80 CRI only. All color temperatures, all lumen packages listed on spec sheet	_	Individual Fixture	G1(G)	1" T-Bar	U	Universal (120-277)	FSD	Factory Select Driver 1%, 0-10v	1	Single Circuit	0	None	W	White	CP
		_ _	Cont. Row(to the foot)	G9(G)	9/16" T-Bar	1	120V	OL2	Osram 1%, 0-10v	E	Emergency	FSB	Factory Select Battery Iota 10W Integral			GLR
				GS(G)	Screw Slot	2	277V	PL2	Advance Xitanium 1%, 0-10v	N	Night Light	IC				
CL	Custom Lumens			FL(F)	1/2" Flange											EF
CW	Custom Watts			NF(N)	Flangeless											
				SF(S)	Spackle Flange											

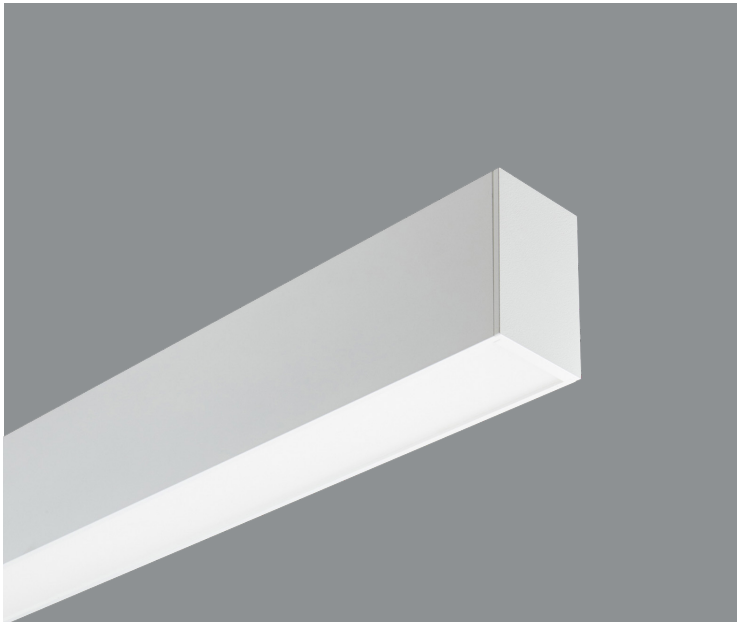
All lengths and continuous rows up to 1,000 ft OR 150 individual fixtures. Consult factory for larger projects.

EDGE EX

Sample Part # EX3D-HE-N-830-24'-AC48G1-U-FSD-1-0-W-QS

QS must be listed at the end of the part number¹

EX2D / 3D / 4D
EX2DI / 3DI / 4DI
EX2I / 3I / 4I



Direct Shielding

V	Satine
HE	High Efficiency
BW	Batwing
WHE	Asymmetric
N	None Indirect fixture only

Indirect Shielding

HE	High Efficiency
BW	Batwing
WHE	Asymmetric
N	None <small>Direct fixture only</small>

CRI, CCT & Output²

8_ _ _ _	80 CRI only. All color temperatures, all lumen packages listed on spec sheet
CL	Custom Lumens
CW	Custom Watts

Length or Pattern³

_	Individual Fixture
_ _ _	Cont. Row (to the foot)
L_X_	L-shape
R_X_	Rectangle
S_	Square
U_X_	U-shape

Mounting

(M)C48G_	Grid
(M)AC48JB	Junction Box
(M)AC48ST	Structure
WA	Wall
S	Surface

Voltage

U	Universal (120-277)
1	120V
2	277V

Driver

FSD	Factory Select Driver 1%, 0-10v
OL2	Osram 1%, 0-10v
PL2	Advance Xitanium 1%, 0-10v

Circuiting⁴

1	Single Circuit
E	Emergency
N	Night Light

Battery⁴

0	None
FSB	Factory Select Battery
ILL	Iota 10W Integral (EX2, EX3)
IC	Iota 10W Integral (EX4)

Finish

W	White
S	Silver
BL	Textured Black

Options

GLR	Internal Fast Blow Fuse
-----	-------------------------

¹ All lengths and continuous rows up to 1,000 ft OR 150 individual fixtures. Black QuickShip only available in 4', 6', and 8' individual lengths. Consult factory for larger projects.

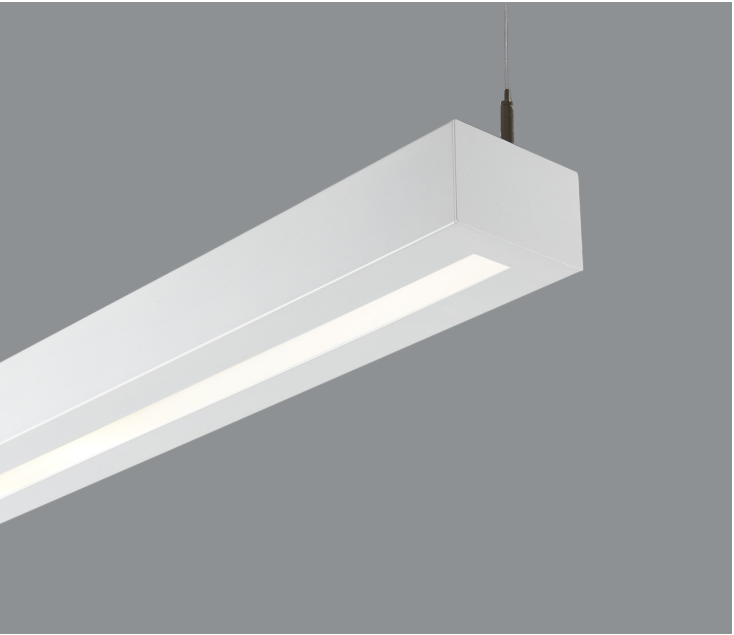
TESA

Sample Part # T4A-835VHO-16'-AC48G1-U-FSD-1-0-W-QS

QS must be listed at the end of the part number*



T4A



Shielding	CRI, CCT & Output ²	Length	Mounting	Voltage	Driver	Circuiting ⁴	Battery ⁴	Finish
A Satine	8 80 CRI only. All color temperatures, all lumen packages listed on spec sheet	— Individual Fixture (4', 8')	AC48G Grid	U Universal (120-277)	FSD Factory Select Driver 1%, 0-10v	1 Single Circuit	0 None	W White
	CL Custom Lumens	-- Cont. Row (in 4' increments)	AC48JB Junction Box	1 120V	OL2 Osram 1%, 0-10v	E Emergency	IR Iota 10W (remote)	
	CW Custom Watts		AC48ST Structure	2 277V	PL2 Advance Xitanium 1%, 0-10v	N Night Light		

All lengths and continuous rows up to 1,000 ft OR 150 individual fixtures. Consult factory for larger projects.

COVE

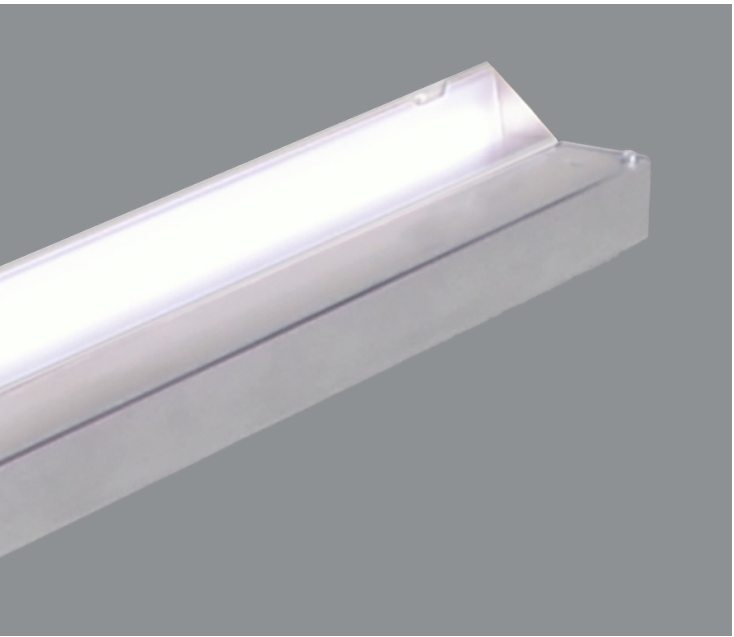
Sample Part # C-830HO-26'-CV-U-FSD-1-0-N-QS

QS must be listed at the end of the part number*

CRI, CCT & Output ²		Length		Mounting		Voltage		Driver		Circuiting ⁴		Battery ⁴		Finish	
8	80 CRI only. All color temperatures, all lumen packages listed on spec sheet	—	Individual Fixture (2', 3', 4', 6', 8')	CV	COVE Mounting	U	Universal (120-277)	FSD	Factory Select Driver 1%, 0-10v	1	Single Circuit	0	None	N	Natural
						1	120V	OL2	Osram 1%, 0-10v	E	Emergency	FSB	Factory Select Battery		
		--	Cont. Row (in 1' increments)			2	277V	PL2	Advance Xitanium 1%, 0-10v	N	Night Light	ILL	Iota 10W Integral (low profile)		
CL	Custom Lumens														
CW	Custom Watts														

All lengths and continuous rows up to 1,000 ft OR 150 individual fixtures. Consult factory for larger projects.

C



ADEO/LUCEN

Architectural Recessed

Sample Part # AD22-A-830-G1-U-FSD-1-0-W-QS

QS must be listed at the end of the part number¹

¹Quick Ship items must be on their own purchase order. QS must be listed at the end of the part number to qualify for the Quick Ship timeline. Orders submitted without QS at the end of the part number will be entered with a standard lead-time. ² Custom outputs are also included, but they must be between the high and low outputs listed on the Spec Sheets. ³ Maximum of 12 inside corners and 12 horizontal corners per Quick Ship order. ⁴ Submittal drawing required for all Battery Packs, Emergency Circuits, patterns, and continuous row configurations. ⁵ End filler option used for fitting fixture into odd lengths. Filler is non-illuminated. Left and right end filler provided with EF specified. Please consult factory for orders with more than 25 end fillers.

AD22

LU22



Shielding

- A** Satine
- W** White rails (for LUCEN only)
- S** Silver rails (for LUCEN only)

CRI, CCT & Output ²

- 8** 80 CRI only. All color temperatures, all lumen packages listed on spec sheet
- CL** Custom Lumens
- CW** CustomWatts

Mounting

- G1** 1" T-Bar
- G9** 9/16" T-Bar
- GS** Screw Slot

Voltage

- U** Universal (120-277)
- 1** 120V
- 2** 277V

Driver

- FSD** Factory Select Driver 1%, 0-10v
- OL2** Osram 1%, 0-10v
- PL2** Advance Xitanium 1%, 0-10v

Circuiting ⁴

- 1** Single Circuit
- E** Emergency
- N** Night Light

Battery ⁴

- 0** None
- FSB** Factory Select Battery
- P** Bodine 10W Integral
- IC** Iota 10W Integral

Finish

- W** White

Options

- CP** Chicago Plenum
- GLR** Internal Fast Blow Fuse
- FW6** 6', 18-gauge, Flex Whip

All lengths and continuous rows up to 1,000 ft OR 150 individual fixtures. Consult factory for larger projects.

AD24

LU24



Shielding

- A** Satine
- W** White rails (for LUCEN only)
- S** Silver rails (for LUCEN only)

CRI, CCT & Output ²

- 8** 80 CRI only. All color temperatures, all lumen packages listed on spec sheet
- CL** Custom Lumens
- CW** CustomWatts

Mounting

- G1** 1" T-Bar
- G9** 9/16" T-Bar
- GS** Screw Slot

Voltage

- U** Universal (120-277)
- 1** 120V
- 2** 277V

Driver

- FSD** Factory Select Driver 1%, 0-10v
- OL2** Osram 1%, 0-10v
- PL2** Advance Xitanium 1%, 0-10v

Circuiting ⁴

- 1** Single Circuit
- E** Emergency
- N** Night Light

Battery ⁴

- 0** None
- FSB** Factory Select Battery
- P** Bodine 10W Integral
- IC** Iota 10W Integral

Finish

- W** White

Options

- CP** Chicago Plenum
- GLR** Internal Fast Blow Fuse
- FW6** 6', 18-gauge, Flex Whip

All lengths and continuous rows up to 1,000 ft OR 150 individual fixtures. Consult factory for larger projects.

AD14

LU14



Shielding

- A** Satine
- W** White rails (for LUCEN only)
- S** Silver rails (for LUCEN only)

CRI, CCT & Output ²

- 8** 80 CRI only. All color temperatures, all lumen packages listed on spec sheet
- CL** Custom Lumens
- CW** CustomWatts

Mounting

- G1** 1" T-Bar
- G9** 9/16" T-Bar
- GS** Screw Slot

Voltage

- U** Universal (120-277)
- 1** 120V
- 2** 277V

Driver

- FSD** Factory Select Driver 1%, 0-10v
- OL2** Osram 1%, 0-10v
- PL2** Advance Xitanium 1%, 0-10v

Circuiting ⁴

- 1** Single Circuit
- E** Emergency
- N** Night Light

Battery ⁴

- 0** None
- FSB** Factory Select Battery
- P** Bodine 10W Integral
- IC** Iota 10W Integral

Finish

- W** White

Options

- CP** Chicago Plenum
- GLR** Internal Fast Blow Fuse
- FW6** 6', 18-gauge, Flex Whip

All lengths and continuous rows up to 1,000 ft OR 150 individual fixtures. Consult factory for larger projects.

TRAVERSE

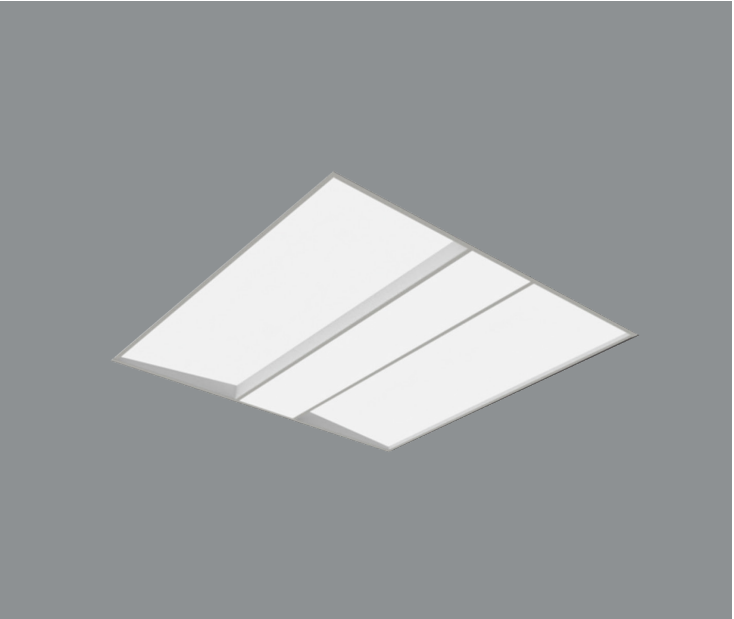
Architectural Recessed

Sample Part # TR22-W-830-G1-U-FSD-1-0-W-QS

QS must be listed at the end of the part number¹

¹Quick Ship items must be on their own purchase order. QS must be listed at the end of the part number to qualify for the Quick Ship timeline. Orders submitted without QS at the end of the part number will be entered with a standard lead-time. ² Custom outputs are also included, but they must be between the high and low outputs listed on the Spec Sheets. ³ Maximum of 12 inside corners and 12 horizontal corners per Quick Ship order. ⁴ Submittal drawing required for all Battery Packs, Emergency Circuits, patterns, and continuous row configurations. ⁵ End filler option used for fitting fixture into odd lengths. Filler is non-illuminated. Left and right end filler provided with EF specified. Please consult factory for orders with more than 25 end fillers.

TR22



Shielding

W White rails

CRI, CCT & Output ²

8 80 CRI only. All color temperatures, all lumen packages listed on spec sheet

CL Custom Lumens
CW CustomWatts

Mounting

G1 1" T-Bar

G9 9/16" T-Bar

GS Screw Slot

Voltage

U Universal (120-277)

1 120V

2 277V

Driver

FSD Factory Select Driver 1%, 0-10v

OL2 Osram 1%, 0-10v

PL2 Advance Xitanium 1%, 0-10v

Circuiting ⁴

1 Single Circuit

E Emergency

N Night Light

Battery ⁴

0 None

FSB Factory Select Battery
PLL Bodine 10W Integral

ILL Iota 10W Integral

Finish

W White

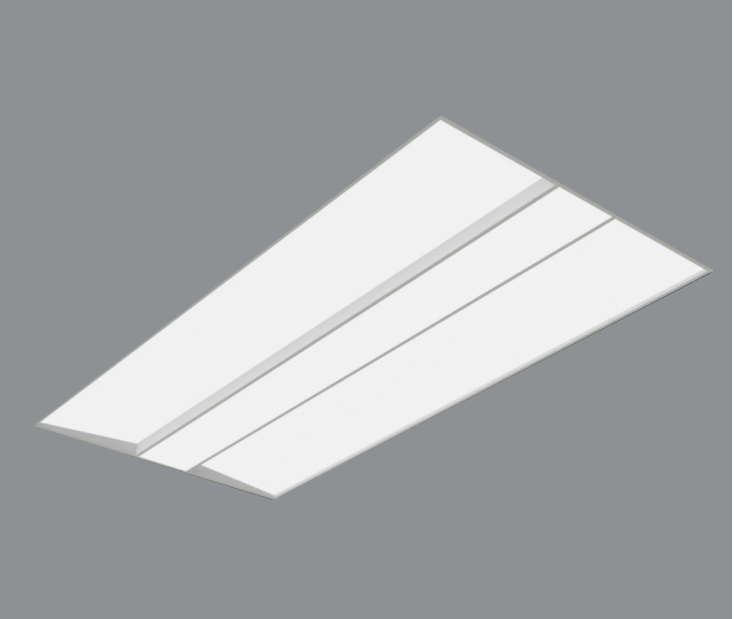
Options

CP Chicago Plenum

FW6 6', 18-gauge, Flex Whip

All lengths and continuous rows up to 1,000 ft OR 150 individual fixtures. Consult factory for larger projects.

TR24



Shielding

W White rails

CRI, CCT & Output ²

8 80 CRI only. All color temperatures, all lumen packages listed on spec sheet

CL Custom Lumens
CW CustomWatts

Mounting

G1 1" T-Bar

G9 9/16" T-Bar

GS Screw Slot

Voltage

U Universal (120-277)

1 120V

2 277V

Driver

FSD Factory Select Driver 1%, 0-10v

OL2 Osram 1%, 0-10v

PL2 Advance Xitanium 1%, 0-10v

Circuiting ⁴

1 Single Circuit

E Emergency

N Night Light

Battery ⁴

0 None

FSB Factory Select Battery
PLL Bodine 10W Integral

ILL Iota 10W Integral

Finish

W White

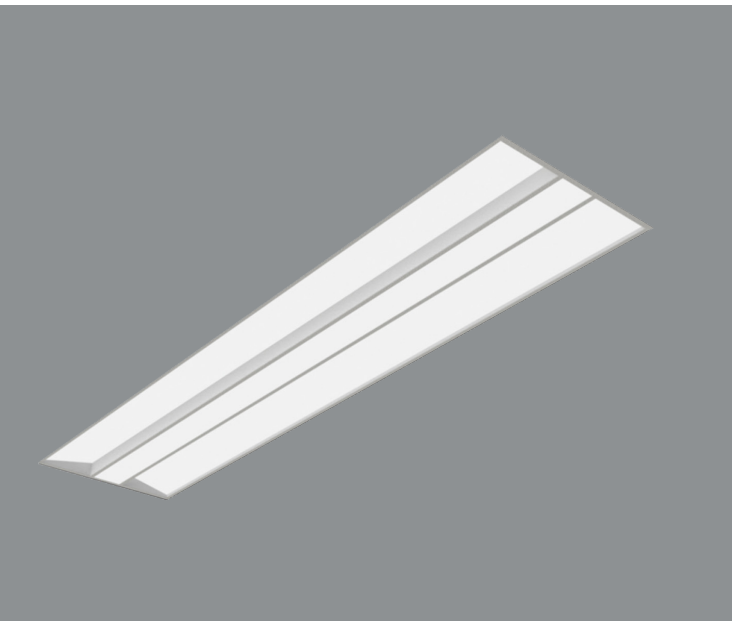
Options

CP Chicago Plenum

FW6 6', 18-gauge, Flex Whip

All lengths and continuous rows up to 1,000 ft OR 150 individual fixtures. Consult factory for larger projects.

TR14



Shielding

W White rails

CRI, CCT & Output ²

8 80 CRI only. All color temperatures, all lumen packages listed on spec sheet

CL Custom Lumens
CW CustomWatts

Mounting

G1 1" T-Bar

G9 9/16" T-Bar

GS Screw Slot

Voltage

U Universal (120-277)

1 120V

2 277V

Driver

FSD Factory Select Driver 1%, 0-10v

OL2 Osram 1%, 0-10v

PL2 Advance Xitanium 1%, 0-10v

Circuiting ⁴

1 Single Circuit

E Emergency

N Night Light

Battery ⁴

0 None

FSB Factory Select Battery
PLL Bodine 10W Integral

ILL Iota 10W Integral

Finish

W White

Options

CP Chicago Plenum

FW6 6', 18-gauge, Flex Whip

All lengths and continuous rows up to 1,000 ft OR 150 individual fixtures. Consult factory for larger projects.



P I N N A C L E
ARCHITECTURAL LIGHTING®

3801 Havana St. Denver CO, 80239

Phone: 303.322.5570

www.pinnacle-ltg.com

October 2024

© 2024 Pinnacle Architectural
Lighting®

Specifications and dimensions subject to change without notice. Specification sheets and brochures that appear on pinnacle-ltg.com are the most recent version and supersede all other previously printed or electronic versions.

A brand of  **legrand®**