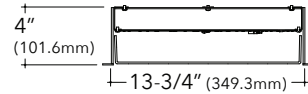


# FINA F14D

14" Direct Recessed Architectural Round  
with Sound Absorption



## Key Features

- Extruded aluminum housing is rolled and welded for seamless finish with 3/4" trim
- Aluminum top cover conceals all electrical components. Highly reflective die-formed white painted steel reflector
- Sound Absorption available in specific configurations
- FINA offered with a 5-year limited warranty. Covers LED, driver and fixture
- ETL Listed conforming to UL1598 in US and CSA 250 in Canada
- Maximum fixture weight is 15 lbs
- Room-side maintenance for LED system
- Buy American Act compliant
- Apparent Noise Reduction Coefficient (NRC) is up to 1.6



Example Part #: F14D-A-830HO-G-U-PL2-1-0-W

## F14D



SHIELDING <sup>1</sup>	SOURCE <sup>2</sup>	MOUNTING	VOLTAGE
<b>A</b> - Flush Satine Lens <b>AL</b> - Drop Satine Lens <b>AR</b> - Regress Satine Lens <b>ASF</b> - Acoustic Solution Flush <i>(use A__ to specify color)</i> <b>ASR</b> - Acoustic Solution Regress <i>(use A__ to specify color)</i> <i>Shielding pg. 2</i>	<b>27</b> - 2700K <b>30</b> - 3000K <b>35</b> - 3500K <b>40</b> - 4000K <b>CL</b> - Custom Lumens <b>CW</b> - Custom Watts <b>NA</b> - Not Applicable <i>(for specifying SA fixtures)</i> <i>Source pg. 3</i>	<b>G</b> - Grid Ceiling <b>FL</b> - Flanged <b>NF</b> - Non-Flanged <b>SF</b> - Spackle Flange <i>Mounting pg. 3</i>	<b>U</b> - Universal <i>(120 thru 277V)</i> <b>1</b> - 120V <b>2</b> - 277V <b>3</b> - 347V <b>NA</b> - Not Applicable <i>(for specifying SA fixtures)</i> <i>Voltage pg. 4</i>
DRIVER	CIRCUITING	BATTERY & EMERGENCY	FINISH
<b>FSD</b> - Factory Select Driver <i>(1%, 0-10v)</i> <b>PL2</b> - Advance Xitanium <i>(1%, 0-10v)</i> <b>EE1</b> - eldoLED ECOdrive <i>(1%, 0-10v)</i> <b>ES1</b> - eldoLED SOLOdrive <i>(0.1%, 0-10v)</i> <b>LH1</b> - Lutron Hi-lume <i>(1%, EcoSystem)</i> <b>OL2</b> - Osram Optotronic <i>(1%, 0-10v)</i> <b>OL4</b> - Osram Optotronic 347v <i>(1%, 0-10v)</i> <b>NA</b> - Not Applicable <i>(for specifying SA fixtures)</i> <i>Driver pg. 4</i>	<b>1</b> - Single Circuit <b>E</b> - Emergency <i>(entire fixture)</i> <b>N</b> - Night Light <i>(entire fixture)</i> <b>NA</b> - Not Applicable <i>(for specifying SA fixtures)</i> <i>Circuiting pg. 4</i>	<b>0</b> - None <b>1G</b> - Bodine GTD <b>1PRL</b> - Bodine 7W Remote <b>FSG</b> - Factory Select ALCR <b>GI</b> - Iota ETS DR <b>GB</b> - Bodine GTD <b>NA</b> - Not Applicable <i>(for specifying SA fixtures)</i> <i>Battery and Emergency pg. 4</i>	<b>W</b> - White <i>Finish pg. 4</i>
FIXTURE OPTIONS	CONTROLS <sup>3</sup>		
<b>CP</b> - Chicago Plenum <b>AM</b> - Antimicrobial Paint <b>FW6</b> - 6' Flex Whip <b>GMF</b> - Slow Blow Fusing <b>DSP</b> - Customer Supplied Battery/Driver/Sensor <b>NA</b> - Not Applicable <i>(for specifying SA fixtures)</i> <i>Fixture Options pg. 4</i>	<b>DLMFC</b> - Wattstopper DLM <i>(wired)</i> <b>ENLI</b> - Enlighted IOT <i>(remote)</i> <b>ENLC</b> - Enlighted Connected Lighting <i>(remote)</i> <b>NA</b> - Not Applicable <i>(for specifying SA fixtures)</i> <i>Controls pg. 5</i>		

<sup>1</sup>When specifying a fixture with only Sound Absorption (no lit components), use NA for the following sections of the part number: SOURCE, VOLTAGE, DRIVER, CIRCUITING, BATTERY & EMERGENCY, or CONTROLS.  
<sup>2</sup>When specifying SOURCE the first \_\_ is for specifying either **8** - 80CRI, **9** - 90CRI. The ending \_\_ are for specifying output, example **HO** - High Output. See output charts for more information. <sup>3</sup>Controls can only be used with Single Circuit (1) or Emergency Circuit (E), cannot be used with any battery options. See Controls chart on page 5 for driver options and more information.



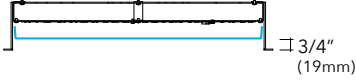
Specifications and dimensions subject to change without notice. Specification sheets that appear on pinnacle-ltg.com are the most recent version and supersede all other previously printed or electronic versions.



## Shielding


- White virgin acrylic lens with matte finish, removable for LED access
- Lens available in 3 positions

### Ordering Code

<b>A or ASF</b>	<b>AL</b>	<b>AR or ASR</b>
Flush Satine Lens or Acoustic Solution	Drop Satine Lens	Regress Satine Lens or Acoustic Solution
		

## Acoustic Solutions

- 12mm PET Polyester Fiber acoustic panel
- Recyclable and contains up-to 90% post-consumer content
- Colors below are for representation purposes, color may vary from photograph, contact factory for sample
- Specify the color of the Acoustic panel with the numeric code below in the Acoustic Finish portion of the part number. For example, specify **A08** for Nickel

<b>A01</b> - Charcoal	<b>A02</b> - Black	<b>A03</b> - Azure	<b>A04</b> - Ruby	<b>A05</b> - Commander	<b>A06</b> - Coffee Bean
					
<b>A07</b> - Almond	<b>A08</b> - Nickel	<b>A09</b> - Stone	<b>A10</b> - Slate	<b>A11</b> - Pear	<b>A12</b> - Teal
					
<b>A13</b> - Warm White	<b>A14</b> - Nighttime Blue	<b>A15</b> - Tiger	<b>A16</b> - Cool Grey	<b>A17</b> - Grey Granite	<b>A18</b> - Dune
					
<b>A19</b> - Bone	<b>A20</b> - Bumblebee	<b>A21</b> - Gingerbread	<b>A22</b> - Raven	<b>A23</b> - Oregano	<b>A24</b> - Mushroom
					
<b>PCC</b> - Custom Color Please note there is a minimum order quantity for custom matching. Consult factory for order quantity, price and lead-time.					



## Source: White LED

- Specify either 80 or 90 CRI
- Longer lead-time may apply for 90 CRI. Consult factory
- 90 CRI = R9≥50

## Sound Absorption

**NA** Not applicable (for Sound Absorption fixtures)

## Custom Output- Lumens OR Wattage

<b>CL</b> _____	Specify CRI, CCT and desired lumens (i.e. CL8352000)	Specify lumens between standard offering listed below. Lumens are specified per color temp
<b>CW</b> _____	Specify CRI, CCT and desired wattage (i.e. CW94020)	Specify watts between standard offering listed below

## 80 CRI

	Color	Shielding		
		<b>A, AL, AR</b>		
		Satine Lens		
		Lumens	Watts	LPW
<b>830LO</b>	3000K	838	9.0	93
<b>830MO</b>	3000K	1438	14.3	101
<b>830HO</b>	3000K	2015	19.6	103
<b>835LO</b>	3500K	895	9.1	98
<b>835MO</b>	3500K	1534	14.4	107
<b>835HO</b>	3500K	2150	19.7	109
<b>840LO</b>	4000K	904	9.1	100
<b>840MO</b>	4000K	1548	14.3	108
<b>840HO</b>	4000K	2169	19.6	111

## 90 CRI

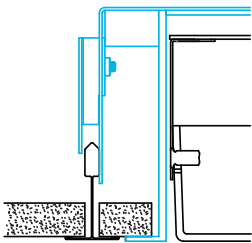
<b>927LO</b>	2700K	701	9.4	75
<b>927MO</b>	2700K	1179	15.0	79
<b>927HO</b>	2700K	1624	20.8	78
<b>930LO</b>	3000K	725	9.3	78
<b>930MO</b>	3000K	1226	14.8	83
<b>930HO</b>	3000K	1692	20.6	82
<b>935LO</b>	3500K	725	9.3	78
<b>935MO</b>	3500K	1226	14.8	83
<b>935HO</b>	3500K	1692	20.6	82
<b>940LO</b>	4000K	768	9.3	82
<b>940MO</b>	4000K	1300	15.0	87
<b>940HO</b>	4000K	1795	20.8	86

## Mounting

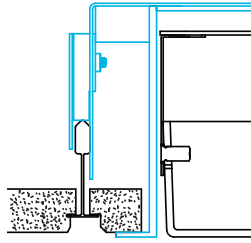
- Designed to install into acoustical grid and inaccessible ceilings
- Tie off fixture to structure with retention wires
- Maximum fixture weight is 15 lbs

### G

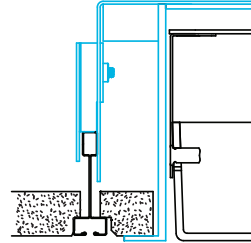
Grid Ceiling with 3/4" (19.1mm) Trim  
15/16" T-Bar



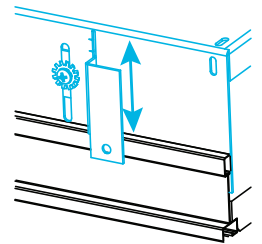
9/16" T-Bar



Screw Slot T-Bar

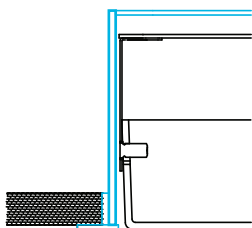


Recessed box allows for 1/2" of adjust-  
ability to accommodate a variety of  
grid ceilings



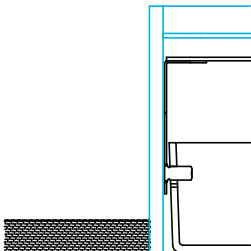
### FL

Standard 3/4" (19.1mm) Flange  
Exposed Flange



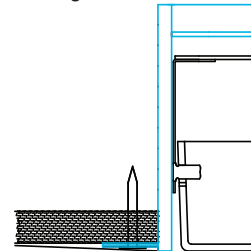
### NF

Non-Flange with 1/4" (6.4mm) Trim  
Metal Pan or Millwork



### SF

Spackle Flange  
Drywall, Flangeless



Specifications and dimensions subject to change without notice. Specification sheets that appear on pinnacle-ltg.com are the most recent version and supersede all other previously printed or electronic versions.

Designed in Denver, CO • USA | pinnacle-ltg.com | O: 303-322-5570 F: 303-322-5568

F14D\_RECESS\_SPEC\_JAN2023



## Voltage

- Some FINA configurations will not accommodate all voltage options; consult with factory

<b>U</b>	Universal
<b>1</b>	120 volt
<b>2</b>	277 volt
<b>3</b>	347 volt
<b>NA</b>	Not Applicable (for Sound Absorption)

## Driver

- Standard Driver Option = FSD
- Driver Lifetime: 50,000 hours at 25°C ambient operating conditions
- For more Driver options, see Pinnacle Resource Guide on download pages at pinnacle-ltg.com
- Some FINA configurations will not accommodate all driver options; consult with factory

### 0-10V Drivers

<b>FSD</b>	Factory Select Driver 1%, 0-10v
<b>OL2</b>	Osram Optotronic, 1%, 0-10v
<b>PL2</b>	Advance Xitanium, 1%, 0-10v
<b>OL4</b>	Osram Optotronic 347v, 1% 0-10v, requires 347v option
<b>EE1</b>	eldoLED ECOdrive 1%, 0-10v Logarithmic
<b>EE2</b>	eldoLED ECOdrive 1%, 0-10v Linear
<b>ES1</b>	eldoLED SOLOdrive 0-10v, 0.1% Logarithmic
<b>ES2</b>	eldoLED SOLOdrive 0-10v, 0% Linear

### DALI Drivers

<b>EE3</b>	eldoLED ECOdrive .1%, DALI (logarithmic)
<b>ES3</b>	eldoLED SOLOdrive .1%, DALI (logarithmic)

### Lutron Drivers

<b>LH1</b>	Lutron Hi-lume Soft-on, Fade-to-black 1%, EcoSystem, LDE1
<b>LH4</b>	Lutron Hi-Lume 1%, 2-wire, Lutron-LTEA2W, 120v only

## Circuiting

- Select fixture circuiting from options below
- Some FINA configurations will not accommodate all circuiting options; consult with factory

<b>1</b>	Single Circuit
<b>E</b>	Emergency Circuit only
<b>N</b>	Night Light Circuit only
<b>NA</b>	Not Applicable (for Sound Absorption)

## Battery & Emergency

- Select battery or emergency options if required
- Battery duration is 90 minutes
- Test button is remote to fixture
- For more Battery options, see Pinnacle Resource Guide on download pages at pinnacle-ltg.com

<b>0</b>	No Battery
<b>1IRC</b>	Iota 10w Remote
<b>1PRS</b>	Bodine 7w Remote, Self Testing
<b>1PRD</b>	Bodine 10w Remote, Dual Flex
<b>FSG</b>	Factory Select Automatic Load Control Relay (ALCR), UNV
<b>GI</b>	Emergency Transfer Switch (ETS) DR Emergency Control Device, UNV
<b>GB</b>	Bodine GTD, Generator Transfer Device, 120v or 277v

### For Approximate Battery Lumen Output

- Multiply battery wattage X fixture LPW shown on Lumen Table
- 10 (watts) x 92.3 (LPW) = 923 battery lumen output

### Battery & Emergency Ordering Examples

- Single circuit, 10w integral battery Ordering Code: 1-1PRS
- Emergency circuit only, 10w integral battery Ordering Code: E-1PRS

## Finish

- Powder-coat white painted finish on exposed trim

<b>W</b>	White
----------	-------

## Fixture Options

- Additional options to enhance the fixture and finish of the product

<b>CP</b>	Chicago Plenum
<b>AM</b>	Antimicrobial Paint
<b>FW6</b>	Flex Whip 6'
<b>GMF</b>	Internal Slow Blow Fuse
<b>DSP</b>	Customer Supplied Battery/Driver/Sensor
<b>NA</b>	Not Applicable (for Sound Absorption)

Specifications and dimensions subject to change without notice. Specification sheets that appear on pinnacle-ltg.com are the most recent version and supersede all other previously printed or electronic versions.

Designed in Denver, CO • USA | pinnacle-ltg.com | O: 303-322-5570 F: 303-322-5568

F14D\_RECESS\_SPEC\_JAN2023





## Controls

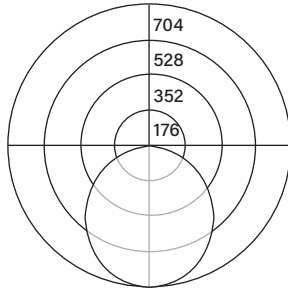
- Pinnacle Lighting offers easy to specify network control solutions that connect to an intelligent centralized system to maximize lighting energy efficiencies or integral sensors for individual fixture control
- Pinnacle Lighting fixtures ship technology ready; commissioning by others
- Controls can only be used with Single Circuit (1) or Emergency Circuit (E)
- Contact factory for any non-standard configurations for layout, placement, or EM options
- One sensor per housing typical, contact factory for more information

	Solution	Components	Network/Sensor	Connection	RQD Drivers	Limitation
<b>DLMFC</b>	Legrand Wattstopper DLM	LMFC-011	Digital Lighting Management (DLM)	Wired, two RJ45 ports	OL2, OL4	None
<b>ENLI</b>	Enlighted IOT	CU-4E	Enlighted, Remote	Enlighted Cable	Any 0-10v	Not available with 347 volt
<b>ENLC</b>	Enlighted Connected Lighting	CU-4E	Enlighted, Remote	Enlighted Cable	Any 0-10v	Not available with 347 volt
<b>NA</b>	Not Applicable (for Sound Absorption)					

## Photometrics

### Satine Lens

Test # ITL92428  
Catalog # F14D-AL-840HO  
Lumens 2226 lm  
Watts 19.6 W  
Efficacy 1174 LPW



### Candela Distribution

Vert Angle	Horizontal Angle
0	700
5	704
10	696
15	680
20	659
25	632
30	601
35	566
40	526
45	483
50	436
55	386
60	333
65	278
70	221
75	164
80	111
85	67
90	36
95	31
100	26
105	22
110	18
115	14
120	10
125	7
130	4
135	2

### Luminance Data (cd/sq.m)

Angle In Degrees	Average 0-Deg	Average 45-Deg	Average 90-Deg
45	7288	7288	7288
55	6978	6978	6978
65	6513	6513	6513
75	5704	5704	5704
85	4804	4804	4804

For all available IES files, please visit our website at [pinnacle-ltg.com](http://pinnacle-ltg.com). Photometry testing in accordance to IESNA-LM-79-08 at an NVLAP accredited testing laboratory. Testing conducted at 25°C ambient conditions

## Approvals & Certifications

**Construction:** Extruded aluminum housing is rolled and welded for seamless finish with minimal trim detail. Aluminum top cover conceals all electrical components. Highly reflective die-formed white painted steel reflector. Wiring access on both sides and top of housing.

**Shielding:** Single piece diffuse lens creating a fully luminous housing. Available with standard satine lens.

**Acoustic Solutions:** Acoustic Solutions panels may be specified in place of lit fixture components to aid in Acoustic Control within a space. Acoustic Solutions material is a 9mm PET Polyester Fiber acoustic panel, containing up to 90% post-consumer content, made by others. Acoustic testing was completed by Riverbank Acoustic. For specific reports, contact Pinnacle directly.

**Mounting:** Designed to install into acoustical grid and inaccessible ceilings. Recessed, aircraft cable, pendant and surface mount available. For recessed, specify G for acoustical grid ceiling. Specify FL, NF, or SF for inaccessible ceilings. Tie off fixture to structure with retention wires. Maximum fixture weight is 15 lbs.

**LED:** 25°C test environment. Lumen output/wattage has a margin of +/- 5%. Luminaire configurations tested in accordance with IES LM-79. Diodes tested in accordance with IES LM-80. Lifetime calculated using IES TM-21. Minimum lifetime greater than 60,000 hours. L70 = 146,500 hours and L90 = 45,000 hours. MacAdam 3-Step Ellipses. Not all products are Lighting Facts listed. For all available IES files, please visit our website at [pinnacle-ltg.com](http://pinnacle-ltg.com).

**CRI, CCT & Output:** Three lumen packages available. Low (LO), Mid (MO) and High (HO). Custom outputs are available. Specify custom lumens or watts between standard offering listed on CRI, CCT & Output page. 80 CRI is available for 3000K, 3500K, and 4000K. 90 CRI is available for 2700K, 3000K, 3500K, and 4000K. 90 CRI = R9≥50.

**Voltage:** Universal (U), 120 volt (1), 277 volt (2), and 347 volt (3) options available. Some

FINA configurations will not accommodate all voltage options; consult with factory.

**Driver:** Standard Driver Option is Advance 0-10V, 1% = PL2. Electronic driver, Power factor is >0.9 with a THD <20%. Driver Lifetime: 50,000 hours at 25°C ambient operating conditions. For more driver options, see Pinnacle Resource Guide on download pages at [pinnacle-ltg.com](http://pinnacle-ltg.com). Some FINA configurations will not accommodate all driver options.

**Circuiting:** Select from Single circuit (1), Emergency circuit (E) or Night Light circuit (N). Some FINA configurations will not accommodate all circuiting options, consult with factory.

**Battery & Emergency:** Select battery or emergency options if required. If battery or emergency option is not required, enter 0. Battery duration is 90 minutes as standard. Test button is remote to fixture. For more Battery options, see Pinnacle Resource Guide on download pages at [pinnacle-ltg.com](http://pinnacle-ltg.com).

**Finish:** Standard powder-coat textured white. Contact factory for additional custom color and finish options.

**Controls:** DLM utilizes wired network connections for digital control through switching and dimming with 0-10v LED drivers. Enlighted Smart Sensor provides multi-functionality including daylight harvesting and PIR occupancy; for IOT platform using 0-10v LED drivers. Enlighted Smart Sensor provides multi-functionality including daylight harvesting and PIR occupancy; for Connected platform using 0-10v LED drivers.

**Labels:** ETL Listed conforming to UL1598 in US and CSA 250 in Canada. Standard and High output lumen packages are IC Rated for recessed fixtures and are approved for dry/damp location unless otherwise noted.

**Fixture Weight:** 15 lbs maximum

**Buy American Act compliant**

**Warranty:** FINA LED offered with a 5-year limited warranty. Covers LED, driver and fixture.

Specifications and dimensions subject to change without notice. Specification sheets that appear on [pinnacle-ltg.com](http://pinnacle-ltg.com) are the most recent version and supersede all other previously printed or electronic versions.

Designed in Denver, CO • USA | [pinnacle-ltg.com](http://pinnacle-ltg.com) | O: 303-322-5570 F: 303-322-5568

F14D\_RECESS\_SPEC\_JAN2023