



10 DAY
QUICK SHIP →

PINNACLE
ARCHITECTURAL LIGHTING®

A brand of  legrand



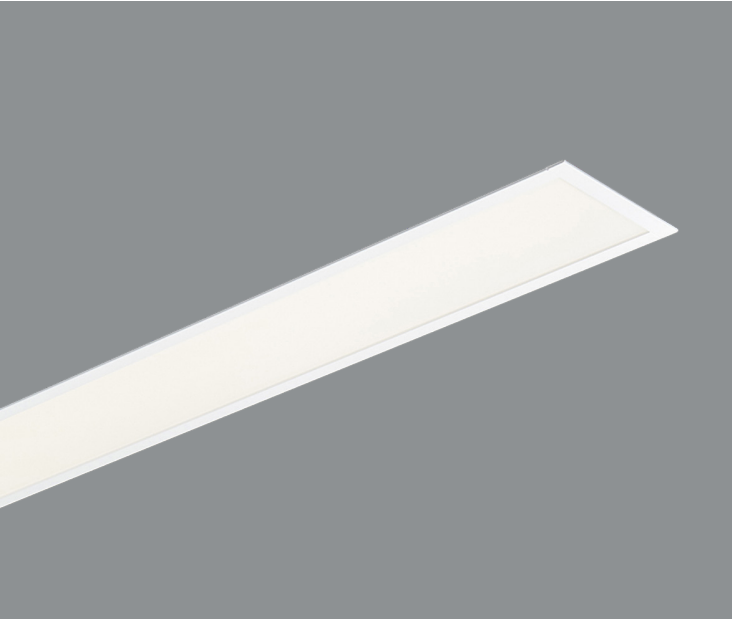


EDGE

Sample Part # EV3D-HE-830-24'-G1-U-OL1-T-0-W-QS

QS must be listed at the end of the part number¹

EV2D / 3D / 4D



Shielding		CRI, CCT & Output ²		Length or Pattern ³		Mounting		Voltage		Driver		Circuiting ⁴		Battery ⁴		Finish		Options
A	Satine	8_____	80 CRI only. All color temperatures, all lumen packages listed on spec sheet	_	Individual Fixture	G1(G)	1" T-Bar	U	Universal (120-277)	FSD	Factory Select Driver 1%, 0-10v	1	Single Circuit	0	None	W	White	CP
HE	High			__	Cont. Row (to an 1/8")	G9(G)	9/16" T-Bar	1	120V	OL2	Osram 1%, 0-10v	E	Emergency	IC	Iota 10W Integral			GLR
BW	Batwing			L_X_	L-shape	GS(G)	Screw Slot	2	277V	PL2	Advance Xitanium 1%, 0-10v	N	Night Light					
WHE	Asymmetric	CL	Custom Lumens	R_X_	Rectangle	FL(F)	1/2" Flange			ND	Non-dimming							
		CW	Custom Watts	S_	Square	NF(N)	Flangeless											
				U_X_	U-shape	SF(S)	Spackle Flange											
WC	Wall to ceiling																	

All lengths and continuous rows up to 1,000 ft OR 150 individual fixtures. Consult factory for larger projects.

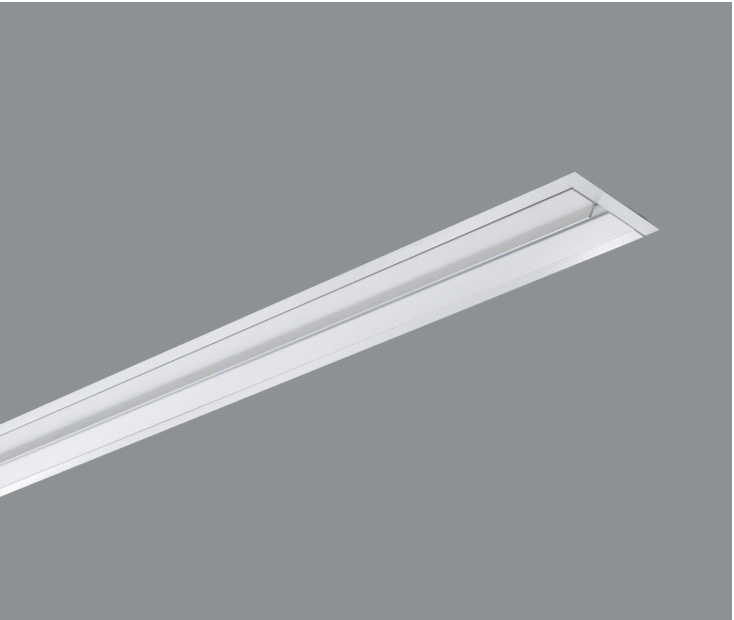
EVL / EVLS



CRI, CCT & Output ²		Length		Mounting		Voltage		Driver		Circuiting ⁴		Battery ⁴		Finish		Options						
8_____	80 CRI only. All color temperatures, all lumen packages listed on spec sheet	_	Individual Fixture	G1(G)	1" T-Bar	U	Universal (120-277)	FSD	Factory Select Driver 1%, 0-10v	1	Single Circuit	0	None	W	White	CP						
				G9(G)	9/16" T-Bar			1	120V							OL2	Osram 1%, 0-10v	E	Emergency	IC	Iota 10W Integral	GLR
				GS(G)	Screw Slot			2	277V							PL2	Advance Xitanium 1%, 0-10v	N	Night Light			
				CL	Custom Lumens			FL(F)	1/2" Flange							ND	Non-dimming					EF
CW	Custom Watts			NF(N)	Flangeless																	
				SF(S)	Spackle Flange																	

All lengths and continuous rows up to 1,000 ft OR 150 individual fixtures. Consult factory for larger projects.

EV3WW



CRI, CCT & Output²		Length		Mounting		Voltage		Driver		Circuiting⁴		Battery⁴		Finish		Options													
8_____	80 CRI only. All color temperatures, all lumen packages listed on spec sheet	_	Individual Fixture	G1(G)	1" T-Bar	U	Universal (120-277)	FSD	Factory Select Driver 1%, 0-10v	1	Single Circuit	0	None	W	White	CP													
																	_ _	Cont. Row(to the foot)	G9(G)	9/16" T-Bar	1	120V	OL2	Osram 1%, 0-10v	E	Emergency	IC	Iota 10W Integral	GLR
CL	Custom Lumens			FL(F)	1/2" Flange			ND	Non-dimming																				
CW	Custom Watts			NF(N)	Flangeless																								
				SF(S)	Spackle Flange																								

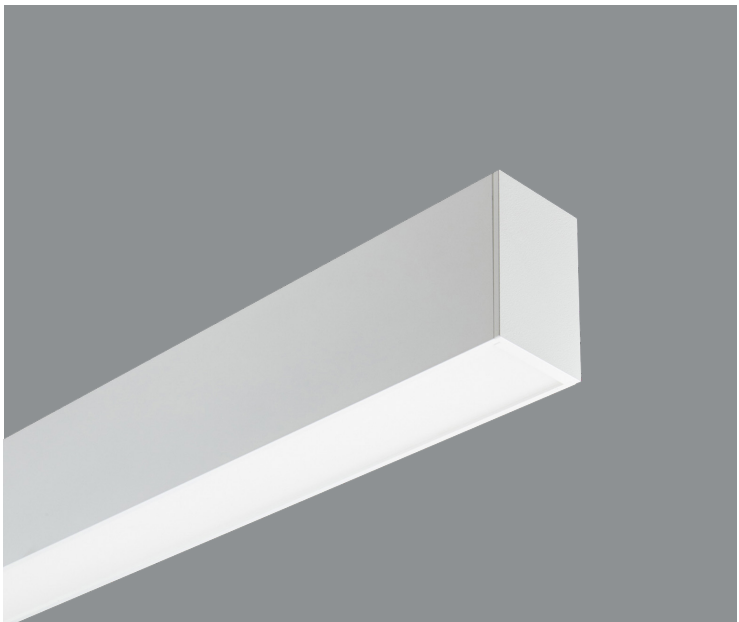
All lengths and continuous rows up to 1,000 ft OR 150 individual fixtures. Consult factory for larger projects.

EDGE EX

Sample Part # EX3D-HE-N-830-24'-AC48G1-U-OL1-1-0-W-QS

QS must be listed at the end of the part number¹

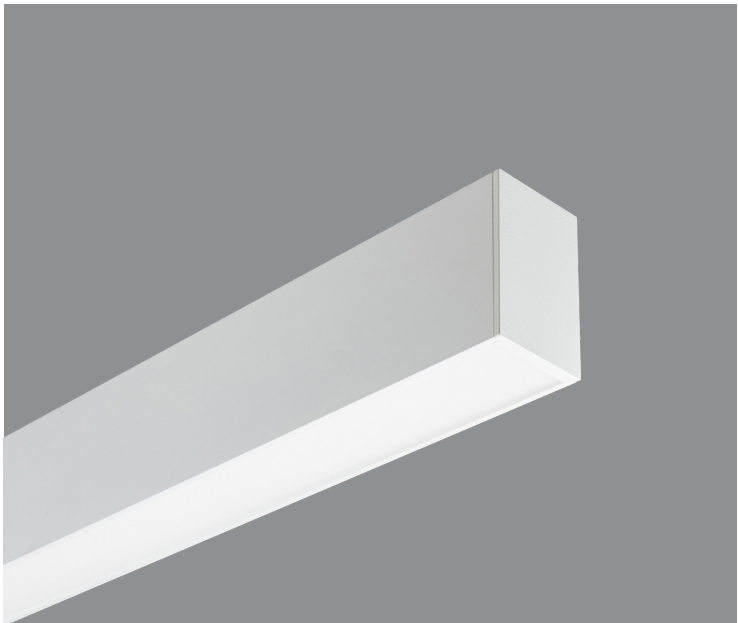
EX2D / 3D / 4D
EX2DI / 3DI / 4DI
EX2I / 3I / 4I



Direct Shielding		CRI, CCT & Output²		Length or Pattern³		Mounting		Voltage		Driver		Circuiting⁴		Battery⁴		Finish		Options	
V	Satine	8_ _ _ _	80 CRI only. All color temperatures, all lumen packages listed on spec sheet	_	Individual Fixture	(M) C48G_	Grid	U	Universal (120-277)	FSD	Factory Select Driver 1%, 0-10v	1	Single Circuit	0	None	W	White	GLR	Internal Fast Blow Fuse
HE	High Efficiency			_ _	Cont. Row (to the foot)	(M)AC48JB	Junction Box			OL2	Osram 1%, 0-10v	E	Emergency	ILL	Iota 10W Integral (EX2, EX3)	S	Silver		
BW	Batwing			L_X_	L-shape	(M)AC48ST	Structure			PL2	Advance Xitanium 1%, 0-10v	N	Night Light	IC	Iota 10W Integral (EX4)	BL	Textured Black		
WHE	Asymmetric			R_X_	Rectangle	WA	Wall			ND	Non-dimming								
N	None Indirect fixture only	CL	Custom Lumens	S_	Square	S	Surface												
		CW	Custom Watts	U_X_	U-shape														
Indirect Shielding		CRI, CCT & Output²		Length or Pattern³		Mounting		Voltage		Driver		Circuiting⁴		Battery⁴		Finish		Options	
HE	High Efficiency	8_ _ _ _	80 CRI only. All color temperatures, all lumen packages listed on spec sheet	_	Individual Fixture	(M)AC48G_	Grid	U	Universal (120-277)	FSD	Factory Select Driver 1%, 0-10v	1	Single Circuit	0	None	W	White	GLR	Internal Fast Blow Fuse
BW	Batwing			_ _	Cont. Row (to the foot)	(M)AC48JB	Junction Box			OL2	Osram 1%, 0-10v	E	Emergency	ILL	Iota 10W Integral	S	Silver		
WHE	Asymmetric			L_X_	L-shape	(M)AC48ST	Structure			PL2	Advance Xitanium 1%, 0-10v	N	Night Light						
N	None Direct fixture only			R_X_	Rectangle	S	Surface			ND	Non-dimming								

All lengths and continuous rows up to 1,000 ft OR 150 individual fixtures. Black QuickShip only available in 4', 6', and 8' individual lengths. Consult factory for larger projects.

EX3WW



Direct Shielding		CRI, CCT & Output²		Length or Pattern³		Mounting		Voltage		Driver		Circuiting⁴		Battery⁴		Finish		Options	
WW	Wall Wash	8_ _ _ _	80 CRI only. All color temperatures, all lumen packages listed on spec sheet	_	Individual Fixture	(M)AC48G_	Grid	U	Universal (120-277)	FSD	Factory Select Driver 1%, 0-10v	1	Single Circuit	0	None	W	White	GLR	Internal Fast Blow Fuse
				_ _	Cont. Row (to the foot)	(M)AC48JB	Junction Box			OL2	Osram 1%, 0-10v	E	Emergency	ILL	Iota 10W Integral	S	Silver		
				L_X_	L-shape	(M)AC48ST	Structure			PL2	Advance Xitanium 1%, 0-10v	N	Night Light						
				R_X_	Rectangle	S	Surface			ND	Non-dimming								
		CL	Custom Lumens	S_	Square														
		CW	Custom Watts	U_X_	U-shape														

All lengths and continuous rows up to 1,000 ft OR 150 individual fixtures. Black QuickShip only available in 4', 6', and 8' individual lengths. Consult factory for larger projects.

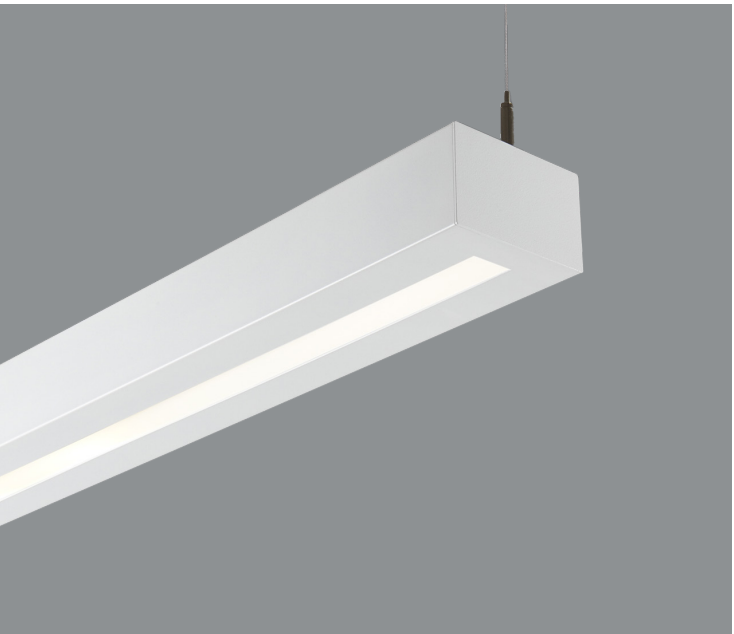
TESA

Sample Part # T4A-835VHO-16'-AC48G1-U-OL1-1-0-W-QS

QS must be listed at the end of the part number*



T4A



Shielding	CRI, CCT & Output ²	Length	Mounting	Voltage	Driver	Circuiting ⁴	Battery ⁴	Finish
A Satine	8 80 CRI only. All color temperatures, all lumen packages listed on spec sheet	— Individual Fixture (4', 8')	AC48G Grid	U Universal (120-277)	FSD Factory Select Driver 1%, 0-10v	1 Single Circuit	0 None	W White
	CL Custom Lumens	-- Cont. Row (in 4' increments)	AC48JB Junction Box	1 120V	OL2 Osram 1%, 0-10v	E Emergency	IR Iota 10W (remote)	
	CW Custom Watts		AC48ST Structure	2 277V	PL2 Advance Xitanium 1%, 0-10v	N Night Light		
					ND Non-dimming			

All lengths and continuous rows up to 1,000 ft OR 150 individual fixtures. Consult factory for larger projects.

COVE

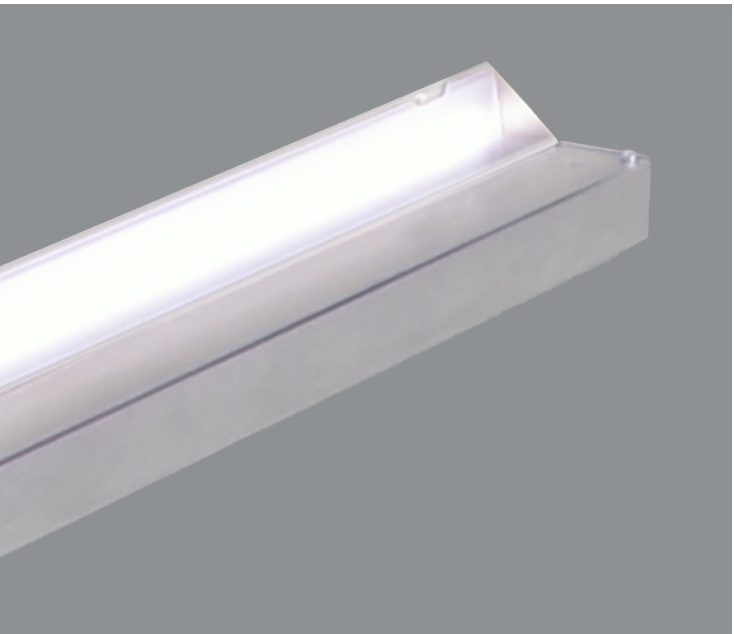
Sample Part # C-830HO-26'-CV-U-OL1-1-0-N-QS

QS must be listed at the end of the part number*

CRI, CCT & Output ²		Length	Mounting		Voltage		Driver		Circuiting ⁴		Battery ⁴		Finish	
8	80 CRI only. All color temperatures, all lumen packages listed on spec sheet	—	Individual Fixture (2', 3', 4', 6', 8')		U	Universal (120-277)	FSD	Factory Select Driver 1%, 0-10v	1	Single Circuit	0	None	N	Natural
CL	Custom Lumens	---	Cont. Row (in 1' increments)		1	120V	OL2	Osram 1%, 0-10v	E	Emergency	ILL	Iota 10W Integral (low profile)		
CW	Custom Watts				2	277V	PL2	Advance Xitanium 1%, 0-10v	N	Night Light				
							ND	Non-dimming						

All lengths and continuous rows up to 1,000 ft OR 150 individual fixtures. Consult factory for larger projects.

C



ADEO/LUCEN

Architectural Recessed

Sample Part # AD22-A-830-G1-U-OL1-1-0-W-QS

QS must be listed at the end of the part number¹

¹Quick Ship items must be on their own purchase order. QS must be listed at the end of the part number to qualify for the Quick Ship timeline. Orders submitted without QS at the end of the part number will be entered with a standard lead-time. ² Custom outputs are also included, but they must be between the high and low outputs listed on the Spec Sheets. ³ Maximum of 12 inside corners and 12 horizontal corners per Quick Ship order. ⁴ Submittal drawing required for all Battery Packs, Emergency Circuits, patterns, and continuous row configurations. ⁵ End filler option used for fitting fixture into odd lengths. Filler is non-illuminated. Left and right end filler provided with EF specified. Please consult factory for orders with more than 25 end fillers.

AD22

LU22



Shielding

V Satine
W White rails
(for LUCEN only)
S Silver rails
(for LUCEN only)

CRI, CCT & Output ²

8 80 CRI only. All color temperatures, all lumen packages listed on spec sheet
CL Custom Lumens
CW CustomWatts

Mounting

G1 1" T-Bar
GS 9/16" T-Bar
GS Screw Slot

Voltage

U Universal (120-277)
1 120V
2 277V

Driver

FSD Factory Select Driver 1%, 0-10v
OL2 Osram 1%, 0-10v
PL2 Advance Xitanium 1%, 0-10v
ND Non-dimming

Circuiting ⁴

1 Single Circuit
E Emergency
N Night Light

Battery ⁴

0 None
P Bodine 10W Integral
IC Iota 10W Integral

Finish

W White

Options

CP Chicago Plenum
GLR Internal Fast Blow Fuse
FW6 6', 18-gauge, Flex Whip

All lengths and continuous rows up to 1,000 ft OR 150 individual fixtures. Consult factory for larger projects.

AD24

LU24



Shielding

V Satine
W White rails
(for LUCEN only)
S Silver rails
(for LUCEN only)

CRI, CCT & Output ²

8 80 CRI only. All color temperatures, all lumen packages listed on spec sheet
CL Custom Lumens
CW CustomWatts

Mounting

G1 1" T-Bar
GS 9/16" T-Bar
GS Screw Slot

Voltage

U Universal (120-277)
1 120V
2 277V

Driver

FSD Factory Select Driver 1%, 0-10v
OL2 Osram 1%, 0-10v
PL2 Advance Xitanium 1%, 0-10v
ND Non-dimming

Circuiting ⁴

1 Single Circuit
E Emergency
N Night Light

Battery ⁴

0 None
P Bodine 10W Integral
IC Iota 10W Integral

Finish

W White

Options

CP Chicago Plenum
GLR Internal Fast Blow Fuse
FW6 6', 18-gauge, Flex Whip

All lengths and continuous rows up to 1,000 ft OR 150 individual fixtures. Consult factory for larger projects.

AD14

LU14



Shielding

V Satine
W White rails
(for LUCEN only)
S Silver rails
(for LUCEN only)

CRI, CCT & Output ²

8 80 CRI only. All color temperatures, all lumen packages listed on spec sheet
CL Custom Lumens
CW CustomWatts

Mounting

G1 1" T-Bar
GS 9/16" T-Bar
GS Screw Slot

Voltage

U Universal (120-277)
1 120V
2 277V

Driver

FSD Factory Select Driver 1%, 0-10v
OL2 Osram 1%, 0-10v
PL2 Advance Xitanium 1%, 0-10v
ND Non-dimming

Circuiting ⁴

1 Single Circuit
E Emergency
N Night Light

Battery ⁴

0 None
P Bodine 10W Integral
IC Iota 10W Integral

Finish

W White

Options

CP Chicago Plenum
GLR Internal Fast Blow Fuse
FW6 6', 18-gauge, Flex Whip

All lengths and continuous rows up to 1,000 ft OR 150 individual fixtures. Consult factory for larger projects.



P I N N A C L E
ARCHITECTURAL LIGHTING®

3801 Havana St. Denver CO, 80239

Phone: 303.322.5570

www.pinnacle-ltg.com

December 2022

© 2022 Pinnacle Architectural
Lighting®

Specifications and dimensions subject to change without notice. Specification sheets and brochures that appear on pinnacle-ltg.com are the most recent version and supersede all other previously printed or electronic versions.

A brand of  **legrand®**