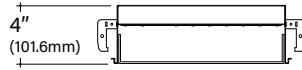


\*Shown with Regress Lens option



# LiFT LF11D

## 1x1 Direct Recessed Architectural Square



### Key Features

- Formed 20 gauge cold rolled steel housing
- Highly reflective die-formed white painted reflector
- Fabricated, captive lens with 3 lens positions
- LiFT offered with a 5-year limited warranty. Covers LED, driver and fixture
- ETL Listed conforming to UL1598 in US and CSA 250 in Canada
- Maximum fixture weight is 12 lbs
- Room-Side Maintenance for LED system
- Buy American Act compliant



Example Part #: LF11D-A-830HO-GF-U-PL2-1-0-W



<b>A_</b>	-----	-----	-
SHIELDING	SOURCE <sup>1</sup>	MOUNTING	VOLTAGE
<b>A</b> - Flush Satine Lens <b>AL</b> - Drop Satine Lens <b>AR</b> - Regress Satine Lens <i>Shielding pg. 2</i>	<b>27</b> - 2700K <b>30</b> - 3000K <b>35</b> - 3500K <b>40</b> - 4000K <b>CL</b> - Custom Lumens <b>CW</b> - Custom Watts <i>Source pg. 2</i>	<b>G</b> - Grid Ceiling <i>(fixture does not fit in standard grid spacing)</i> <b>GF</b> - Grid Ceiling with Flange <b>FL</b> - Flanged <b>SF</b> - Spackle Flange <i>Mounting pg. 3</i>	<b>U</b> - Universal (120 thru 277V) <b>1</b> - 120V <b>2</b> - 277V <b>3</b> - 347V <i>Voltage pg. 3</i>

---	-	---	--
DRIVER	CIRCUITING	BATTERY & EMERGENCY	FINISH
<b>FSD</b> - Factory Select Driver (1%, 0-10v) <b>PL2</b> - Advance Xitanium (1%, 0-10v, standard) <b>EE1</b> - eldoLED ECOdrive (1%, 0-10v) <b>ES1</b> - eldoLED SOLOdrive (0.1%, 0-10v) <b>LH1</b> - Lutron Hi-Lume (1%, EcoSystem) <b>OL2</b> - Osram Optotronic (1%, 0-10v) <b>OL4</b> - Osram Optotronic 347v (1%, 0-10v) <i>Driver pg. 4</i>	<b>1</b> - Single Circuit <b>E</b> - Emergency (entire fixture) <b>N</b> - Night Light (entire fixture) <i>Circuiting pg. 4</i>	<b>0</b> - None <b>1PB</b> - Bodine 10W <b>FSG</b> - Factory Select ALCR <b>GI</b> - Iota ETS DR <b>GB</b> - Bodine GTD <i>Battery and Emergency pg. 4</i>	<b>W</b> - White <b>S</b> - Metallic Silver <b>BL</b> - Textured Black <b>BR</b> - Bronze <b>GR</b> - Graphite <b>CC</b> - Custom Color <i>Finish pg. 4</i>

---	---
FIXTURE OPTIONS	CONTROLS <sup>2</sup>
<b>CP</b> - Chicago Plenum <b>AM</b> - Antimicrobial Paint <b>FW6</b> - 6' Flex Whip <b>DSP</b> - Customer Supplied Battery/Driver/Sensor <b>GMF</b> - Slow Blow Fusing <i>Fixture Options pg. 5</i>	<b>DLMFC</b> - Wattstopper DLM (wired) <b>ENLI</b> - Enlighted IOT (remote) <b>ENLC</b> - Enlighted Connected Lighting (remote) <i>Controls pg. 5</i>

<sup>1</sup>When specifying SOURCE the first \_ is for specifying either **8** - 80CRI, **9** - 90CRI. The ending \_\_ are for specifying output, example **HO** - High Output. See output charts for more information. <sup>2</sup>Controls can only be used with Single Circuit (**1**) or Emergency Circuit (**E**). See Controls chart on page 4 for driver options and more information.

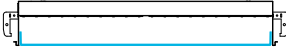
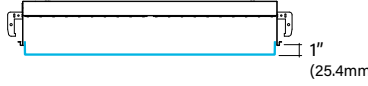
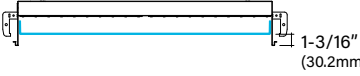
Specifications and dimensions subject to change without notice. Specification sheets that appear on pinnacle-ltg.com are the most recent version and supersede all other previously printed or electronic versions.



## Shielding

- Fabricated, captive lens with 3 lens positions
- Highly reflective white reflectors maintain uniform lens brightness

### Ordering Code

<b>A</b>	<b>AL</b>	<b>AR</b>
Flush Satine Lens	Drop Satine Lens	Regress Satine Lens
		

## Source: White LED

- Specify either 80 or 90 CRI
- Longer lead-time may apply for 90 CRI. Consult factory
- 80 CRI = R9≥19 and 90 CRI = R9≥61

## Custom Output- Lumens OR Wattage

<b>CL</b> _____	Specify CRI, CCT and desired lumens (i.e. CL8352000)	Specify lumens between standard offering listed below. Lumens are specified per color temp
<b>CW</b> _____	Specify CRI, CCT and desired wattage (i.e. CW94020)	Specify watts between standard offering listed below

### 80 CRI

	Color	Lumens	Shielding <b>A, AL, AR</b> Satine Lens	
			Watts	LPW
<b>830LO</b>	3000K	552	6.0	92
<b>830MO</b>	3000K	888	9.1	98
<b>830HO</b>	3000K	1215	12.8	95
<b>835LO</b>	3500K	571	6.0	95
<b>835MO</b>	3500K	931	9.1	102
<b>835HO</b>	3500K	1291	12.8	101
<b>840LO</b>	4000K	599	6.0	99
<b>840MO</b>	4000K	965	9.1	106
<b>840HO</b>	4000K	1329	12.9	103

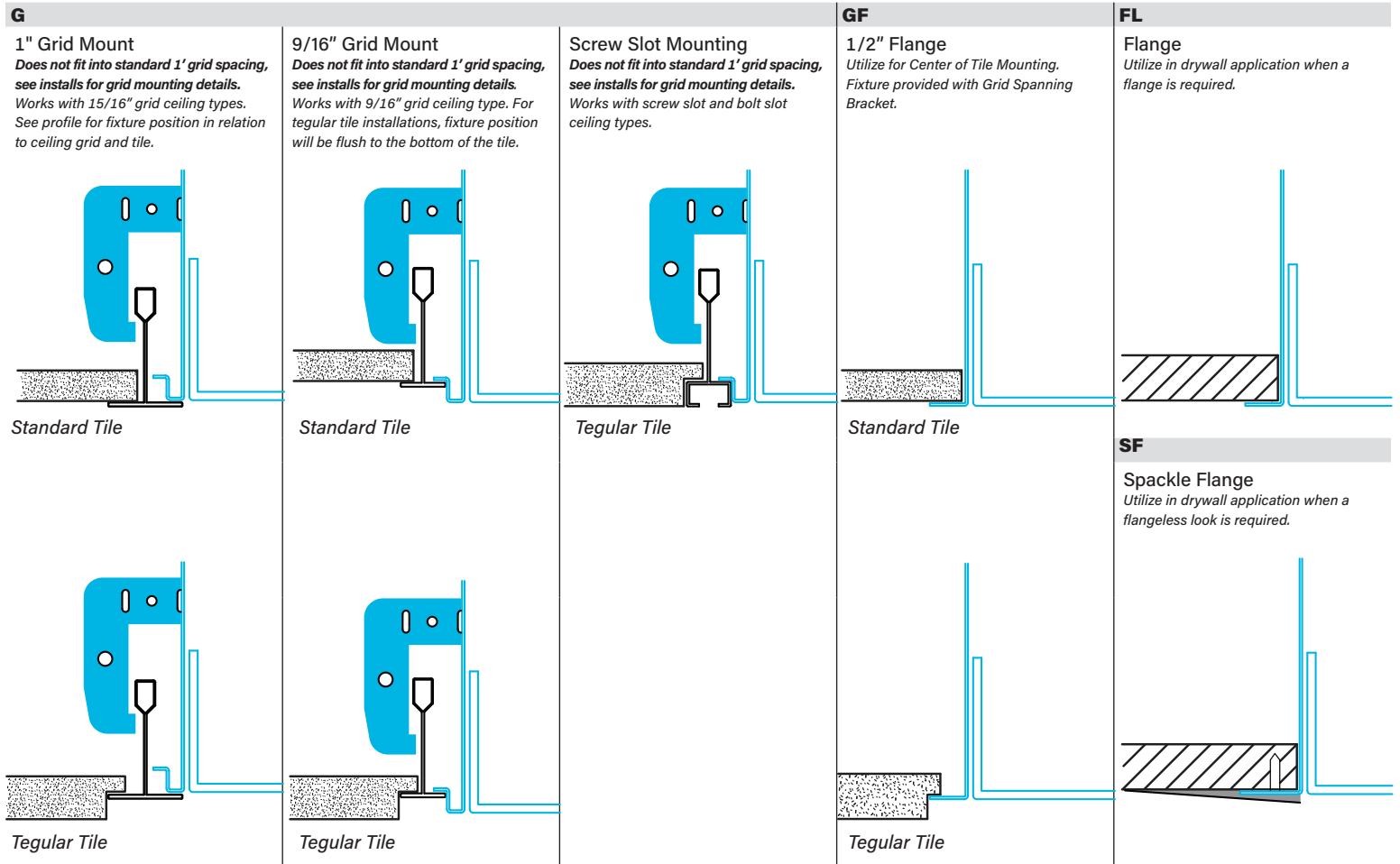
### 90 CRI

<b>927LO</b>	2700K	448	6.0	74
<b>927MO</b>	2700K	722	9.1	79
<b>927HO</b>	2700K	991	12.8	77
<b>930LO</b>	3000K	478	6.0	79
<b>930MO</b>	3000K	771	9.1	85
<b>930HO</b>	3000K	1060	12.8	83
<b>935LO</b>	3500K	478	6.0	79
<b>935MO</b>	3500K	771	9.1	85
<b>935HO</b>	3500K	1060	12.8	83
<b>940LO</b>	4000K	503	6.0	84
<b>940MO</b>	4000K	810	9.1	89
<b>940HO</b>	4000K	1110	12.9	86



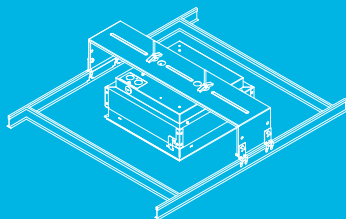
## Mounting

- LiFT 1x1 Recessed does not fit into standard 1' x 1' grid spacing, see installs for grid mounting details.
- Designed to install into acoustical grid and inaccessible ceilings
- Grid retention clips integral to housing and require mechanical attachment
- Tie off fixture to structure with retention wires
- Maximum fixture weight is 12 lbs
- Refer to installation instructions during installation at the job site
- Approved for dry/damp location unless otherwise noted



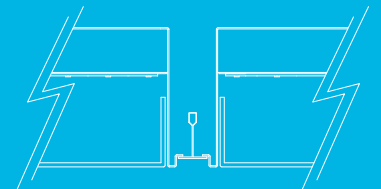
### G vs. GF Installation

LiFT 1x1 can be ordered as either Grid Ceiling Flange (G) or 1/2" Flange (GF). The 1/2" flange (GF) is for mounting the fixture in the center of a tile. The grid ceiling flange (G) is for if you are making a pattern with LiFT and would want to mount this off center. The GF mounting option comes with a grid spanning bracket (as show to the side) that will hold the fixture in the center of the tile.



### Side-by-Side Installation

LiFT has the ability to have 2 fixtures mounted side by side using the same grid. This detail allows LiFT to be installed in a pattern with only the space of the T-bar between the fixtures.



## Voltage

- Some LiFT configurations will not accommodate all voltage options; consult with factory

<b>U</b>	Universal
<b>1</b>	120 volt
<b>2</b>	277 volt
<b>3</b>	347 volt

Specifications and dimensions subject to change without notice. Specification sheets that appear on pinnacle-ltg.com are the most recent version and supersede all other previously printed or electronic versions.

Designed in Denver, CO • USA | pinnacle-ltg.com | O: 303-322-5570 F: 303-322-5568

LF11D\_RECESSED\_SPEC\_OCT2022



## Driver

- Standard Driver Option = FSD
- Driver Lifetime: 50,000 hours at 25°C ambient operating conditions
- For more Driver options, see Pinnacle Resource Guide on downloads page
- at pinnacle-ltg.com
- Some LiFT configurations will not accommodate all driver options; consult with factory

### 0-10V Drivers

<b>FSD</b>	Factory Select Driver 1%, 0-10v
<b>OL2</b>	Osram Optotronic, 1%, 0-10v
<b>OL4</b>	Osram Optotronic 347v, 1% 0-10v, requires 347v option
<b>EE1</b>	eldoLED ECOdrive 1%, 0-10v Logarithmic
<b>EE2</b>	eldoLED ECOdrive 1%, 0-10v Linear
<b>ES1</b>	eldoLED SOLOdrive 0-10v, 0.1% Logarithmic
<b>ES2</b>	eldoLED SOLOdrive 0-10v, 0% Linear

### DALI Drivers

<b>EE3</b>	eldoLED ECOdrive .1%, DALI (logarithmic)
<b>ES3</b>	eldoLED SOLOdrive .1%, DALI (logarithmic)

### Lutron Drivers

<b>LH1</b>	Lutron Hi-lume Soft-on, Fade-to-black 1%, EcoSystem, LDE1
<b>LH4</b>	Lutron Hi-Lume 1%, 2-wire, Lutron-LTEA2W, 120v only

## Circuiting

- Select fixture circuiting from options below
- Some LiFT configurations will not accommodate all circuiting options; consult with factory

<b>1</b>	Single Circuit
<b>E</b>	Emergency Circuit only
<b>N</b>	Night Light Circuit only

## Battery & Emergency

- Select battery or emergency options if required
- Battery duration is 90 minutes
- Test button is integral
- For more Battery options, see Pinnacle Resource Guide on downloads page at pinnacle-ltg.com

<b>0</b>	No Battery
<b>1IRC</b>	Iota 10w Remote
<b>1PB</b>	Bodine 10w Integral
<b>1PRS</b>	Bodine 7w Remote, Self Testing
<b>1PRD</b>	Bodine 10w Remote, Dual Flex
<b>FSG</b>	Factory Select Automatic Load Control Relay (ALCR)
<b>GI</b>	Emergency Transfer Switch (ETS) DR Emergency Control Device
<b>GB</b>	Bodine GTD, Generator Transfer Device

**For Approximate Battery Lumen Output**

- Multiply battery wattage X fixture LPW shown on Lumen Table
- 10 (watts) x 92.3 (LPW) = 923 battery lumen output

**Battery & Emergency Ordering Examples**

- Single circuit, 10w integral battery      Ordering Code: 1-1PB
- Emergency circuit only, 10w integral battery      Ordering Code: E-1PB

## Finish

- Powder-coat white painted finish on exposed trim
- Selecting a fixture finish other than white may impact lumen output; consult factory for more information

<b>W</b>	White ( <i>white cord/white canopy</i> )
<b>S</b>	Metallic Silver ( <i>grey cord/silver canopy</i> )
<b>BL</b>	Textured Black ( <i>black cord/black canopy</i> )
<b>BR</b>	Bronze ( <i>white cord/bronze canopy</i> )
<b>GR</b>	Graphite ( <i>white cord/graphite canopy</i> )
<b>CC</b>	Custom Color ( <i>white cord/color match canopy</i> )



## Fixture Options

- Additional options to enhance the fixture and finish of the product

<b>CP</b>	Chicago Plenum
<b>AM</b>	Antimicrobial PaintDSP
<b>FW6</b>	Flex Whip 6'
<b>DSP</b>	Customer Supplied Battery/Driver/Sensor
<b>GMF</b>	Internal Slow Blow Fuse

## Controls

- Pinnacle Lighting offers easy to specify network control solutions that connect to an intelligent centralized system to maximize lighting energy efficiencies or integral sensors for individual fixture control
- Pinnacle Lighting fixtures ship technology ready; commissioning by others
- Controls can only be used with Single Circuit (1) or Emergency Circuit (E)
- Contact factory for any non-standard configurations for layout, placement, or EM options
- One sensor per housing typical, contact factory for more information

	Solution	Components	Network/Sensor	Connection	RQD Drivers	Limitation
<b>DLMFC</b>	Legrand Wattstopper DLM	LMFC-011	Digital Lighting Management (DLM)	Wired, two RJ45 ports	OL2, OL4	None
<b>ENLI</b>	Enlighted IOT	CU-4E	Enlighted, Daylight/PIR Occupancy	Enlighted Cable	Any 0-10v	Not available with 347 volt
<b>ENLC</b>	Enlighted Connected Lighting	CU-4E	Enlighted, Daylight/PIR Occupancy	Enlighted Cable	Any 0-10v	Not available with 347 volt

## Approvals & Certifications

**Construction:** Formed 20 gauge cold rolled steel housing. Highly reflective die-formed white painted reflector. Wiring access available on top of housing. Lens is removable for room-side maintenance of lens, driver and LED boards.

**Shielding:** Single piece extruded diffuse acrylic lens creating a fully luminous fixture.

**Mounting:** LiFT 1x1 Recessed does not fit into standard 1' x 1' grid spacing, see installs for grid mounting details. Specify G for acoustical grid ceiling. Specify FL or SF for inaccessible ceilings. Grid retention clips integral to housing and require mechanical attachment. Tie off fixture to structure with retention wires. Maximum fixture weight is 12 lbs.

**LED:** 25°C test environment. Lumen output/wattage has a margin of +/- 5%. All luminaire configurations tested in accordance with IES LM-79. Diodes tested in accordance with IES LM-80. Lifetime calculated using IES TM-21. Minimum lifetime greater than 60,000 hours. L70 = 146,500 hours and L90 = 45,000 hours. MacAdam 3-Step Ellipses. Not all products are Lighting Facts listed. For all available IES files, please visit our website at pinnacle-ltg.com.

**Color & Lumen Output:** Three lumen packages available. Low (LO), Middle (MO) and High (HO). Custom outputs are available. Specify custom lumens or watts between standard offering listed on CRI, CCT & Output page. 80 CRI is available for 3000K, 3500K, and 4000K. 90 CRI is available for 2700K, 3000K, 3500K, and 4000K. 80 CRI = R9≥19 and 90 CRI = R9≥61.

**Voltage:** Universal (U), 120 volt (1), 277 volt (2) and 347 volt (3) options available. Must specify OL4 in Driver section when 347 volt (3) is selected. Some LiFT configurations will not accommodate all voltage options; consult with factory.

**Driver:** Standard Driver Option is Advance 0-10v, 1% = PL2. Electronic driver, Power factor is >0.9 with a THD <20%. Driver Lifetime: 50,000 hours at 25°C ambient operating conditions. For more driver options, see Pinnacle Resource Guide. Some LiFT configura-

tions will not accommodate all driver options.

**Circuiting:** Select from single circuit (1), Emergency circuit (E) or Night Light circuit (N). Some LiFT configurations will not accommodate all circuiting options; consult with factory.

**Battery & Emergency:** Select battery or emergency options if required. If battery or emergency option is not required, enter 0. Battery duration is 90 minutes as standard. Test button is integral. For more Battery options, see Pinnacle Resource Guide on downloads page at pinnacle-ltg.com.

**Finish:** Powder-coat white painted finish on exposed trim.

**Controls:** DLM utilizes wired network connections for digital control through switching and dimming with 0-10v LED drivers. Enlighted Smart Sensor provides multi-functionality including daylight harvesting and PIR occupancy; for IOT platform using 0-10v LED drivers. Enlighted Smart Sensor provides multi-functionality including daylight harvesting and PIR occupancy; for Connected platform using 0-10v LED drivers.

**Labels:** ETL Listed conforming to UL1598 in US and CSA 250 in Canada. LO, MO, and HO lumen packages are IC Rated, approved for dry/damp location unless otherwise noted.

**Fixture Weight:** 12 lbs maximum.

**Buy American Act Compliant**

**Warranty:** LiFT LED offered with a 5-year limited warranty. Covers LED, driver and fixture.