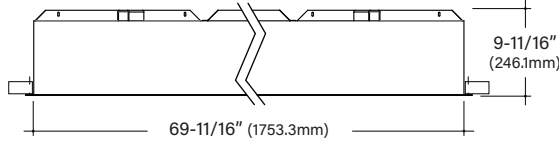




FINA F72

72" Recessed Architectural Round



Key Features

- Extruded aluminum housing is rolled and welded for seamless finish with 1/4" trim
- Aluminum top cover conceals all electrical components. Highly reflective die-formed white painted steel reflector
- FINA offered with a 5-year limited warranty. Covers LED, driver and fixture
- IC Rated, UL and cUL Listed, approved for dry/damp location
- Maximum fixture weight is 147 lbs
- Room-side maintenance for LED system
- Buy American Act compliant



Example Part #: F72-A-830HO-G-U-OL2-1-0-W



SHIELDING	CRI, CCT & OUTPUT	MOUNTING	VOLTAGE
A - Flat Satine Lens <i>Shielding pg. 2</i>	27 - 2700K 30 - 3000K 35 - 3500K 40 - 4000K CL - Custom Lumens CW - Custom Watts <i>Lumen Output pg. 2</i> <i>Example: 830HO is 8 = 80 CRI; 30 = 3000K;</i> <i>HO = High Output; Blank = Standard Output</i>	G - Grid Ceiling FL - Flanged NF - Non-Flanged SF - Spackle Flange <i>Mounting pg. 2</i>	U - Universal (120 thru 277V) 1 - 120V 2 - 277V 3 - 347V <i>Voltage pg. 3</i>
DRIVER	CIRCUITING	BATTERY & EMERGENCY	FINISH
FSD - Factory Select Driver (1%, 0-10v) OL2 - Osram (1%, 0-10v, standard) OL4 - Osram 347V (1%, 0-10v) EE1 - eldoLED ECOdrive (1%, 0-10v) ES1 - eldoLED SOLOdrive (0%, 0-10v) LH1 - Lutron Hi-lume (1%, EcoSystem) PL2 - Advance Xitanium (1%, 0-10v) PS1 - Advance Xitanium (50%/100%) <i>Driver pg. 3</i>	1 - Single Circuit E - Emergency (entire fixture) N - Night Light (entire fixture) <i>Circuiting pg. 3</i>	0 - None 1P - Bodine 10W 1I - Iota 10W 1IC - Iota 10W, (CEC Listed) 1G - Bodine GTD FSG - Factory Select ALCR GI - Iota ETS DR GB - Bodine GTD <i>Battery and Emergency pg. 3</i>	W - White <i>Finish pg. 3</i>
FIXTURE OPTIONS	CONTROLS		
CP - Chicago Plenum AM - Antimicrobial Paint FW6 - 6' Flex Whip GMF - Slow Blow Fusing <i>Fixture Options pg. 4</i>	<i>Pinnacle is able to accommodate different control solutions from different manufacturers. Consult Factory for more information.</i>		

Specifications and dimensions subject to change without notice. Specification sheets that appear on pinnacle-ltg.com are the most recent version and supersede all other previously printed or electronic versions.

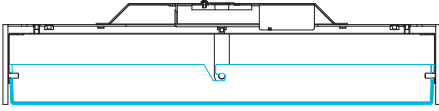


Shielding

- White virgin acrylic lens with matte finish, removable for LED access

A

Flat Lens



Output

- Specify either 80 or 90 CRI
- Longer lead-time may apply for 90 CRI. Consult factory.
- 80 CRI = R9≥19 and 90 CRI = R9≥61

Custom Output- Lumens OR Wattage

CL _____ Specify CRI, CCT and desired lumens (i.e. CL8353000)

Specify lumens between standard offering listed below. Lumens are specified per color temp

CW _____ Specify CRI, CCT and desired wattage (i.e. CW940325)

Specify watts between standard offering listed below

80 CRI

	Color	Output	Watts	Shielding	
				A Satine Lens	
				Lumens	LPW
830	3000K	Standard	251.9	24813	98.5
830HO	3000K	High	398	37439	94.1
835	3500K	Standard	251.9	25515	101.3
835HO	3500K	High	398	38499	96.7
840	4000K	Standard	251.9	26009	103.3
840HO	4000K	High	398	39244	98.6

90 CRI

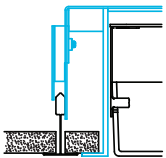
927	2700K	Standard	251.9	19611	77.9
927HO	2700K	High	398	29590	74.3
930	3000K	Standard	251.9	22853	90.7
930HO	3000K	High	398	34482	86.6
935	3500K	Standard	251.9	22938	91.1
935HO	3500K	High	398	34611	87.0
940	4000K	Standard	251.9	23201	92.1
940HO	4000K	High	398	35006	88.0

Mounting

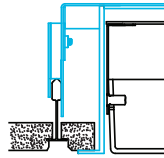
- Designed to install into acoustical grid and inaccessible ceilings
- Tie off fixture to structure with retention wires
- Maximum fixture weight is 147 lbs

G

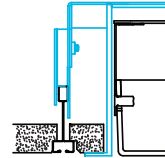
Grid Ceiling with 3/4" (19.1mm) Trim
15/16" T-Bar



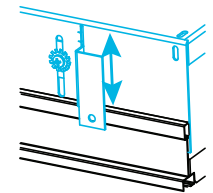
9/16" T-Bar



Screw Slot T-Bar

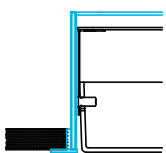


Recessed box allows for 1/2" of adjustability to accommodate a variety of grid ceilings



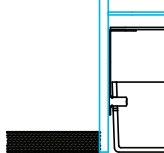
FL

Standard 3/4" (19.1mm) Flange
Exposed Flange



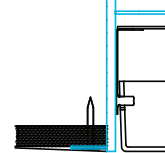
NF

Non-Flange with 1/4" (6.4mm) Trim
Metal Pan or Millwork



SF

Spackle Flange
Drywall, Flangeless



Specifications and dimensions subject to change without notice. Specification sheets that appear on pinnacle-ltg.com are the most recent version and supersede all other previously printed or electronic versions.

Designed in Denver, CO • USA | pinnacle-ltg.com | O: 303-322-5570 F: 303-322-5568

F72_LED_SPEC_OCT2021



Voltage

- Some FINA configurations will not accommodate all voltage options; consult with factory

U	Universal
1	120 volt
2	277 volt
3	347 volt

Driver

- Standard Driver Option = FSD
- Driver Lifetime: 50,000 hours at 25°C ambient operating conditions
- For more Driver options, see Pinnacle Resource Guide on download pages at pinnacle-ltg.com
- Some FINA configurations will not accommodate all driver options; consult with factory

0-10V Drivers

FSD	Factory Select Driver 1%, 0-10v
PL2	Advance Xitanium 1%, 0-10v
PL4	Advance Xitanium 347v 1%, 0-10v, requires 347v
OL2	Osram Optotronic, 1%, 0-10v
OL4	Osram Optotronic 347v, 1% 0-10v, requires 347v option
EE1	eldoLED ECOdrive 1%, 0-10v Logarithmic
EE2	eldoLED ECOdrive 1%, 0-10v Linear
ES1	eldoLED SOLOdrive 0-10v, 0% Logarithmic
ES2	eldoLED SOLOdrive 0-10v, 0% Linear

DALI Drivers

EE3	eldoLED SOLOdrive .1%, DALI (logarithmic)
EE4	eldoLED SOLOdrive .1%, DALI (linear)
OD1	Osram Optotronic 1%, DEXAL
OD2	Osram Optotronic 1%, DALI 2 Channel

Lutron Drivers

LH1	Lutron Hi-lume Soft-on, Fade-to-black 1%, EcoSystem, LDE1
LH4	Lutron Hi-Lume 1%, 2-wire, Lutron-LTEA2W, 120v only

Alternate Drivers

PS1	Signify Advance Xitanium Step Dimming 50%/100%
------------	--

Circuiting

- Select fixture circuiting from options below
- Some FINA configurations will not accommodate all circuiting options; consult with factory

1	Single Circuit
E	Emergency Circuit only
N	Night Light Circuit only

Battery & Emergency

- Select battery or emergency options if required
- Battery duration is 90 minutes
- Test button is integral to fixture
- For more Battery options, see Pinnacle Resource Guide on download pages at pinnacle-ltg.com

0	No Battery
1IC	Iota 10w Integral
1ILL	Iota 10w Integral Lithium, Self Testing
1IRH	Iota 20w Remote
1P	Bodine 10w Integral
1PLL	Bodine 10w Integral Lithium, Self Testing
1PRH	Bodine 20w Remote
FSG	Factory Select Automatic Load Control Relay (ALCR)
GI	Emergency Transfer Switch (ETS) DR Emergency Control Device
GB	Bodine GTD, Generator Transfer Device

For Approximate Battery Lumen Output

- Multiply battery wattage X fixture LPW shown on Lumen Table
- 10 (watts) x 92.3 (LPW) = 923 battery lumen output

Battery & Emergency Ordering Examples

- Single circuit, 10w integral battery Ordering Code: 1-1P
- Emergency circuit only, 10w integral battery Ordering Code: E-1P



Finish

- Powder-coat white painted finish on exposed trim

W White

Fixture Options

- Additional options to enhance the fixture and finish of the product

CP	Chicago Plenum
AM	Antimicrobial Paint
FW6	Flex Whip 6'
GMF	Internal Slow Blow Fuse

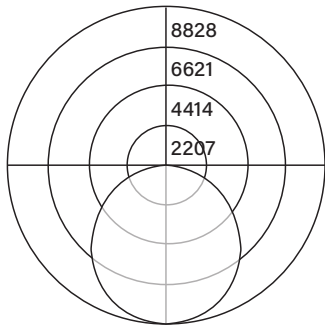
Controls

- Pinnacle is able to accommodate different control solutions from different manufacturers. Consult Factory for more information.

Photometrics

Satine Lens

Test #	ITL84397
Catalog #	F72-A-840
Lumens	26009 lm
Watts	251.9 W
Efficacy	103 LPW



Candela Distribution

Vert Angle	Horizontal Angle				
	0	22.5	45	67.5	90
0	8828	8828	8828	8828	8828
5	8799	8799	8795	8795	8800
10	8698	8694	8695	8695	8694
15	8515	8520	8524	8522	8525
20	8275	8275	8272	8276	8265
25	7939	7950	7954	7952	7955
30	7564	7568	7571	7561	7568
35	7130	7104	7107	7107	7112
40	6595	6601	6602	6603	6616
45	6026	6045	6033	6047	6045
50	5406	5415	5427	5431	5424
55	4764	4762	4747	4765	4757
60	4053	4052	4055	4055	4049
65	3308	3305	3313	3323	3310
70	2575	2553	2546	2556	2549
75	1800	1807	1814	1813	1820
80	1104	1096	1085	1099	1078
85	500	501	499	502	503
90	30	26	35	33	32

Luminance Data (cd/sq.m)

Angle In Degrees	Average 0-Deg	Average 45-Deg	Average 90-Deg
45	3472	3476	3484
55	3384	3372	3379
65	3190	3194	3191
75	2833	2856	2866
85	2338	2335	2350

For all available IES files, please visit our website at pinnacle-ltg.com. Photometry testing in accordance to IESNA-LM-79-08 at an NVLAP accredited testing laboratory. Testing conducted at 25°C ambient conditions

Approvals & Certifications

Construction: Extruded aluminum housing is rolled and welded for seamless finish with minimal trim detail. Aluminum top cover conceals all electrical components. Highly reflective die-formed white painted steel reflector. Wiring access on both sides and top of housing.

Shielding: Single piece diffuse lens creating a fully luminous housing. Available with standard satine lens.

Mounting: Designed to install into acoustical grid and inaccessible ceilings. Specify G for acoustical grid ceiling. Specify FL, NF, or SF for inaccessible ceilings. Tie off fixture to structure with retention wires. Maximum fixture weight is 147 lbs.

LED: 25°C test environment. Lumen output/wattage has a margin of +/- 5%. All luminaire configurations tested in accordance with IES LM-79. Diodes tested in accordance with IES LM-80. Lifetime calculated using IES TM-21. Minimum lifetime greater than 60,000 hours. MacAdam 3-Step Ellipses. Not all products are Lighting Facts listed. For all available IES files, please visit our website at pinnacle-ltg.com.

CRI, CCT & Output: Two lumen packages available. Standard and High (HO). Custom outputs are available. Specify custom lumens or watts between standard offering listed on CRI, CCT & Output page. 80 CRI is available for 3000K, 3500K, and 4000K. 90 CRI is available for 2700K, 3000K, 3500K, and 4000K. 80 CRI = R9≥19 and 90 CRI = R9≥61.

Voltage: Universal (U), 120 volt (1), 277 volt (2) and 347 volt (3) options available. Must specify OL3 in Driver section when 347 volt (3) is selected. Some FINA configurations will not accommodate all voltage options; consult with factory.

Driver: Standard Driver Option is Osram 0-10V, 1% = OL2. Electronic driver, Power factor is >0.9 with a THD <20%. Driver Lifetime: 50,000 hours at 25°C ambient operating conditions. Ambient operating range: -20°F/-30°C to TBD. For more driver options, see Pinnacle Resource Guide on download pages at pinnacle-ltg.com. Some FINA configurations will not accommodate all driver options.

Circuiting: Select from single circuit (1), Emergency circuit (E) or Night Light circuit (N). Some FINA configurations will not accommodate all circuiting options, consult with factory.

Battery & Emergency: Select battery or emergency options if required. If battery or emergency option is not required, enter 0. Battery duration is 90 minutes as standard. Test button is integral to fixture. For more Battery options, see Pinnacle Resource Guide on download pages at pinnacle-ltg.com.

Finish: Standard powder-coat textured white. Contact factory for additional custom color and finish options.

Controls: Consult factory.

Labels: UL and cUL Listed. Standard and HO lumen packages are IC Rated, approved for dry/damp location unless otherwise noted.

Fixture Weight: 147 lbs. maximum

Buy American Act Compliant

Warranty: FINA LED offered with a 5-year limited warranty. Covers LED, driver and fixture.

Specifications and dimensions subject to change without notice. Specification sheets that appear on pinnacle-ltg.com are the most recent version and supersede all other previously printed or electronic versions.

Designed in Denver, CO • USA | pinnacle-ltg.com | O: 303-322-5570 F: 303-322-5568

F72_LED_SPEC_OCT2021