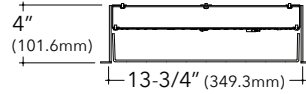


FINA F14D

14" Direct Recessed Architectural Round
with Sound Absorption

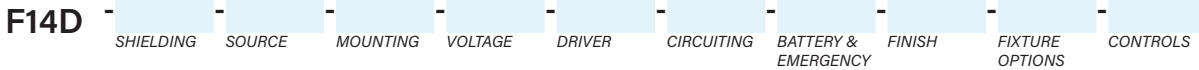


Key Features

- Extruded aluminum housing is rolled and welded for seamless finish with 3/4" trim
- Aluminum top cover conceals all electrical components. Highly reflective die-formed white painted steel reflector
- Sound Absorption available in specific configurations
- FINA offered with a 5-year limited warranty. Covers LED, driver and fixture
- ETL Listed conforming to UL1598 in US and CSA 250 in Canada
- Maximum fixture weight is 15 lbs
- Room-side maintenance for LED system
- Buy American Act compliant
- Apparent Noise Reduction Coefficient (NRC) is up to 1.6



Example Part #: F14D-A-830HO-G-U-PL2-1-0-W



SHIELDING ¹	SOURCE ²	MOUNTING	VOLTAGE
A - Flush Satine Lens AL - Drop Satine Lens AR - Regress Satine Lens ASF - Acoustic Solution Flush <i>(use P__ to specify color)</i> ASR - Acoustic Solution Regress <i>(use P__ to specify color)</i> Shielding pg. 2	27 - 2700K 30 - 3000K 35 - 3500K 40 - 4000K CL - Custom Lumens CW - Custom Watts NA - Not Applicable <i>(for specifying SA fixtures)</i> Source pg. 3	G - Grid Ceiling FL - Flanged NF - Non-Flanged SF - Spackle Flange Mounting pg. 3	U - Universal <i>(120 thru 277V)</i> 1 - 120V 2 - 277V 3 - 347V NA - Not Applicable <i>(for specifying SA fixtures)</i> Voltage pg. 4
DRIVER	CIRCUITING	BATTERY & EMERGENCY	FINISH
FSD - Factory Select Driver <i>(1%, 0-10v)</i> PL2 - Advance Xitanium <i>(1%, 0-10v)</i> EE1 - eldoLED ECOdrive <i>(1%, 0-10v)</i> ES1 - eldoLED SOLOdrive <i>(0%, 0-10v)</i> LH1 - Lutron Hi-lume <i>(1%, EcoSystem)</i> OL2 - Osram Optotronic <i>(1%, 0-10v)</i> OL4 - Osram Optotronic 347v <i>(1%, 0-10v)</i> NA - Not Applicable <i>(for specifying SA fixtures)</i> Driver pg. 4	1 - Single Circuit E - Emergency <i>(entire fixture)</i> N - Night Light <i>(entire fixture)</i> NA - Not Applicable <i>(for specifying SA fixtures)</i> Circuiting pg. 4	0 - None 1G - Bodine GTD 1PRL - Bodine 7W Remote FSG - Factory Select ALCR GI - Iota ETS DR GB - Bodine GTD NA - Not Applicable <i>(for specifying SA fixtures)</i> Battery and Emergency pg. 4	W - White Finish pg. 4
FIXTURE OPTIONS	CONTROLS ³		
CP - Chicago Plenum AM - Antimicrobial Paint FW6 - 6' Flex Whip GMF - Slow Blow Fusing NA - Not Applicable <i>(for specifying SA fixtures)</i> Fixture Options pg. 4	DLMFC - Wattstopper DLM <i>(wired)</i> ENLI - Enlighted IOT <i>(remote)</i> ENLC - Enlighted Connected Lighting <i>(remote)</i> NA - Not Applicable <i>(for specifying SA fixtures)</i> Controls pg. 5		

¹When specifying a fixture with only Sound Absorption (no lit components), use NA for the following sections of the part number: SOURCE, VOLTAGE, DRIVER, CIRCUITING, BATTERY & EMERGENCY, or CONTROLS.
²When specifying SOURCE the first __ is for specifying either **8** - 80CRI, **9** - 90CRI. The ending __ are for specifying output, example **HO** - High Output. See output charts for more information. ³Controls can only be used with Single Circuit (1) or Emergency Circuit (E), cannot be used with any battery options. See Controls chart on page 5 for driver options and more information.

Specifications and dimensions subject to change without notice. Specification sheets that appear on pinnacle-ltg.com are the most recent version and supersede all other previously printed or electronic versions.



Shielding

- White virgin acrylic lens with matte finish, removable for LED access
- Lens available in 3 positions

Ordering Code

A or ASF Flush Satine Lens or Acoustic Solution	AL Drop Satine Lens	AR or ASR Regress Satine Lens or Acoustic Solution

Acoustic Solutions

- 9mm PET Polyester Fiber acoustic panel
- Recyclable and contains up-to 90% post-consumer content
- Use SAFP __ or SARP __ for direct panels
- Colors below are for representation purposes, color may vary from photograph, contact factory for sample.
- Specify the color of the Sound Absorption with the numeric code below in the Shielding portion of the part number. For example, SAFP04 for Direct Sound Absorption, Flush Mounting, White 04

Standard Colors

P04 - White	P12 - Medium Grey	P27 - Black	P28 - Dark Grey	P33 - Royal Blue

Secondary Colors - May increase lead-time for order. Consult Factory.

P02 - Yellow	P03 - Orange	P05 - Light Tan	P06 - Carmel	P10 - Silver	P11 - Light Grey	P13 - Granny Smith
P14 - Lime	P16 - Dark Blue	P17 - Red	P18 - Dark Red	P19 - Purple	P22 - Sky Blue	P23 - Deep Blue
P25 - Grey	P26 - Heathered Grey	P34 - Teal	P36 - Dark Silver	P37 - Blue	PCC - Custom Color	
					Please note there is a minimum order quantity for custom matching. Consult factory for order quantity, price and lead-time.	



Source: White LED

- Specify either 80 or 90 CRI
- Longer lead-time may apply for 90 CRI. Consult factory
- 80 CRI = R9≥19 and 90 CRI = R9≥61

Sound Absorption

NA Not applicable (for Sound Absorption fixtures)

Custom Output- Lumens OR Wattage

CL _____	Specify CRI, CCT and desired lumens (i.e. CL8352000)	Specify lumens between standard offering listed below. Lumens are specified per color temp
CW _____	Specify CRI, CCT and desired wattage (i.e. CW94020)	Specify watts between standard offering listed below

80 CRI

	Color	Shielding		
		A, AL, AR		
		Satine Lens		
		Lumens	Watts	LPW
830LO	3000K	838	9.0	93
830MO	3000K	1438	14.3	101
830HO	3000K	2015	19.6	103
835LO	3500K	895	9.1	98
835MO	3500K	1534	14.4	107
835HO	3500K	2150	19.7	109
840LO	4000K	904	9.1	100
840MO	4000K	1548	14.3	108
840HO	4000K	2169	19.6	111

90 CRI

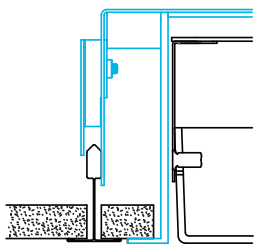
927LO	2700K	701	9.4	75
927MO	2700K	1179	15.0	79
927HO	2700K	1624	20.8	78
930LO	3000K	725	9.3	78
930MO	3000K	1226	14.8	83
930HO	3000K	1692	20.6	82
935LO	3500K	725	9.3	78
935MO	3500K	1226	14.8	83
935HO	3500K	1692	20.6	82
940LO	4000K	768	9.3	82
940MO	4000K	1300	15.0	87
940HO	4000K	1795	20.8	86

Mounting

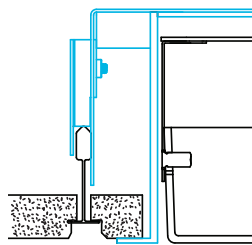
- Designed to install into acoustical grid and inaccessible ceilings
- Tie off fixture to structure with retention wires
- Maximum fixture weight is 15 lbs

G

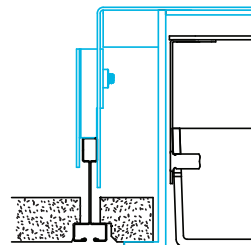
Grid Ceiling with 3/4" (19.1mm) Trim
15/16" T-Bar



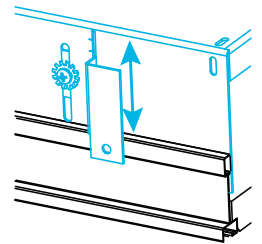
9/16" T-Bar



Screw Slot T-Bar

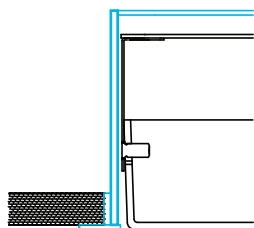


Recessed box allows for 1/2" of adjustability to accommodate a variety of grid ceilings



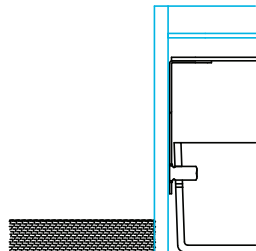
FL

Standard 3/4" (19.1mm) Flange
Exposed Flange



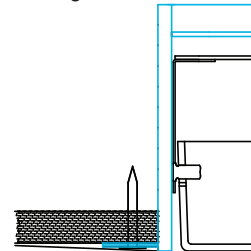
NF

Non-Flange with 1/4" (6.4mm) Trim
Metal Pan or Millwork



SF

Spackle Flange
Drywall, Flangeless



Specifications and dimensions subject to change without notice. Specification sheets that appear on pinnacle-ltg.com are the most recent version and supersede all other previously printed or electronic versions.



Voltage

- Some FINA configurations will not accommodate all voltage options; consult with factory

U	Universal
1	120 volt
2	277 volt
3	347 volt
NA	Not Applicable (for Sound Absorption)

Driver

- Standard Driver Option = FSD
- Driver Lifetime: 50,000 hours at 25°C ambient operating conditions
- For more Driver options, see Pinnacle Resource Guide on download pages at pinnacle-ltg.com
- Some FINA configurations will not accommodate all driver options; consult with factory

0-10V Drivers

FSD	Factory Select Driver 1%, 0-10v
OL2	Osram Optotronic, 1%, 0-10v
OL4	Osram Optotronic 347v, 1% 0-10v, requires 347v option
EE1	eldoLED ECOdrive 1%, 0-10v Logarithmic
EE2	eldoLED ECOdrive 1%, 0-10v Linear
ES1	eldoLED SOLOdrive 0-10v, 0% Logarithmic
ES2	eldoLED SOLOdrive 0-10v, 0% Linear

DALI Drivers

EE3	eldoLED SOLOdrive .1%, DALI (logarithmic)
EE4	eldoLED SOLOdrive .1%, DALI (linear)

Lutron Drivers

LH1	Lutron Hi-lume Soft-on, Fade-to-black 1%, EcoSystem, LDE1
LH4	Lutron Hi-Lume 1%, 2-wire, Lutron-LTEA2W, 120v only

Circuiting

- Select fixture circuiting from options below
- Some FINA configurations will not accommodate all circuiting options; consult with factory

1	Single Circuit
E	Emergency Circuit only
N	Night Light Circuit only
NA	Not Applicable (for Sound Absorption)

Battery & Emergency

- Select battery or emergency options if required
- Battery duration is 90 minutes
- Test button is remote to fixture
- For more Battery options, see Pinnacle Resource Guide on download pages at pinnacle-ltg.com

0	No Battery
1IRC	Iota 10w Remote
1PRS	Bodine 7w Remote, Self Testing
1PRD	Bodine 10w Remote, Dual Flex
FSG	Factory Select Automatic Load Control Relay (ALCR)
GI	Emergency Transfer Switch (ETS) DR Emergency Control Device
GB	Bodine GTD, Generator Transfer Device

For Approximate Battery Lumen Output

- Multiply battery wattage X fixture LPW shown on Lumen Table
- 10 (watts) x 92.3 (LPW) = 923 battery lumen output

Battery & Emergency Ordering Examples

- Single circuit, 10w integral battery Ordering Code: 1-1PRS
- Emergency circuit only, 10w integral battery Ordering Code: E-1PRS

Finish

- Powder-coat white painted finish on exposed trim

W	White
----------	-------

Fixture Options

- Additional options to enhance the fixture and finish of the product

CP	Chicago Plenum
AM	Antimicrobial Paint
FW6	Flex Whip 6'
GMF	Internal Slow Blow Fuse
NA	Not Applicable (for Sound Absorption)

Specifications and dimensions subject to change without notice. Specification sheets that appear on pinnacle-ltg.com are the most recent version and supersede all other previously printed or electronic versions.

Designed in Denver, CO • USA | pinnacle-ltg.com | O: 303-322-5570 F: 303-322-5568

F14D_RECESS_SPEC_MAY2022



Controls

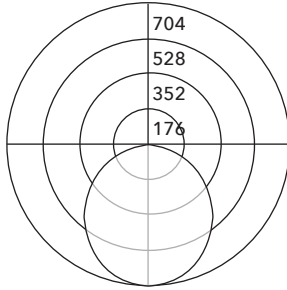
- Pinnacle Lighting offers easy to specify network control solutions that connect to an intelligent centralized system to maximize lighting energy efficiencies or integral sensors for individual fixture control
- Pinnacle Lighting fixtures ship technology ready; commissioning by others
- Controls can only be used with Single Circuit (1) or Emergency Circuit (E)
- Contact factory for any non-standard configurations for layout, placement, or EM options
- One sensor per housing typical, contact factory for more information

	Solution	Components	Network/Sensor	Connection	RQD Drivers	Limitation
DLMFC	Legrand Wattstopper DLM	LMFC-011	Digital Lighting Management (DLM)	Wired, two RJ45 ports	OL2, OL4	None
ENLI	Enlighted IOT	CU-4E	Enlighted, Remote	Enlighted Cable	Any 0-10v	Not available with 347 volt
ENLC	Enlighted Connected Lighting	CU-4E	Enlighted, Remote	Enlighted Cable	Any 0-10v	Not available with 347 volt
NA	Not Applicable (for Sound Absorption)					

Photometrics

Satine Lens

Test # ITL92428
 Catalog # F14D-AL-840HO
 Lumens 2226 lm
 Watts 19.6 W
 Efficacy 114 LPW



Candela Distribution

Vert Angle	Horizontal Angle
0	700
5	704
10	696
15	680
20	659
25	632
30	601
35	566
40	526
45	483
50	436
55	386
60	333
65	278
70	221
75	164
80	111
85	67
90	36
95	31
100	26
105	22
110	18
115	14
120	10
125	7
130	4
135	2
140	2

Luminance Data (cd/sq.m)

Angle In Degrees	Average 0-Deg	Average 45-Deg	Average 90-Deg
45	7288	7288	7288
55	6978	6978	6978
65	6513	6513	6513
75	5704	5704	5704
85	4804	4804	4804

For all available IES files, please visit our website at pinnacle-ltg.com. Photometry testing in accordance to IESNA-LM-79-08 at an NVLAP accredited testing laboratory. Testing conducted at 25°C ambient conditions

Approvals & Certifications

Construction: Extruded aluminum housing is rolled and welded for seamless finish with minimal trim detail. Aluminum top cover conceals all electrical components. Highly reflective die-formed white painted steel reflector. Wiring access on both sides and top of housing.

Shielding: Single piece diffuse lens creating a fully luminous housing. Available with standard satine lens.

Acoustic Solutions: Acoustic Solutions panels may be specified in place of lit fixture components to aid in Acoustic Control within a space. Acoustic Solutions material is a 9mm PET Polyester Fiber acoustic panel, containing up to 90% post-consumer content, made by others. Acoustic testing was completed by Riverbank Acoustic. For specific reports, contact Pinnacle directly.

Mounting: Designed to install into acoustical grid and inaccessible ceilings. Recessed, aircraft cable, pendant and surface mount available. For recessed, specify G for acoustical grid ceiling. Specify FL, NF, or SF for inaccessible ceilings. Tie off fixture to structure with retention wires. Maximum fixture weight is 15 lbs.

LED: 25°C test environment. Lumen output/wattage has a margin of +/- 5%. All luminaire configurations tested in accordance with IES LM-79. Diodes tested in accordance with IES LM-80. Lifetime calculated using IES TM-21. Minimum lifetime greater than 60,000 hours. L70 = 146,500 hours and L90 = 45,000 hours. MacAdam 3-Step Ellipses. Not all products are Lighting Facts listed. For all available IES files, please visit our website at pinnacle-ltg.com.

CRI, CCT & Output: Three lumen packages available. Low (LO), Mid (MO) and High (HO). Custom outputs are available. Specify custom lumens or watts between standard offering listed on CRI, CCT & Output page. 80 CRI is available for 3000K, 3500K, and 4000K. 90 CRI is available for 2700K, 3000K, 3500K, and 4000K. 80 CRI = R9≥19 and 90 CRI = R9≥61.

Voltage: Universal (U), 120 volt (1), 277 volt (2), and 347 volt (3) options available. Some

FINA configurations will not accommodate all voltage options; consult with factory.

Driver: Standard Driver Option is Advance 0-10V, 1% = PL2. Electronic driver, Power factor is >0.9 with a THD <20%. Driver Lifetime: 50,000 hours at 25°C ambient operating conditions. For more driver options, see Pinnacle Resource Guide on download pages at pinnacle-ltg.com. Some FINA configurations will not accommodate all driver options.

Circuiting: Select from Single circuit (1), Emergency circuit (E) or Night Light circuit (N). Some FINA configurations will not accommodate all circuiting options, consult with factory.

Battery & Emergency: Select battery or emergency options if required. If battery or emergency option is not required, enter 0. Battery duration is 90 minutes as standard. Test button is remote to fixture. For more Battery options, see Pinnacle Resource Guide on download pages at pinnacle-ltg.com.

Finish: Standard powder-coat textured white. Contact factory for additional custom color and finish options.

Controls: DLM utilizes wired network connections for digital control through switching and dimming with 0-10v LED drivers. Enlighted Smart Sensor provides multi-functionality including daylight harvesting and PIR occupancy; for IOT platform using 0-10v LED drivers. Enlighted Smart Sensor provides multi-functionality including daylight harvesting and PIR occupancy; for Connected platform using 0-10v LED drivers.

Labels: ETL Listed conforming to UL1598 in US and CSA 250 in Canada. Standard and High output lumen packages are IC Rated for recessed fixtures and are approved for dry/damp location unless otherwise noted.

Fixture Weight: 15 lbs maximum

Buy American Act compliant

Warranty: FINA LED offered with a 5-year limited warranty. Covers LED, driver and fixture.

Specifications and dimensions subject to change without notice. Specification sheets that appear on pinnacle-ltg.com are the most recent version and supersede all other previously printed or electronic versions.

Designed in Denver, CO • USA | pinnacle-ltg.com | O: 303-322-5570 F: 303-322-5568

F14D_RECESS_SPEC_MAY2022