

See Housing
Section

See Mounting
Section

EDGE EV6PM

6" Recessed Perimeter

Key Features

- Extruded aluminum trim with formed cold rolled 20 gauge steel back box housing
- Highly reflective die-formed white painted steel reflector
- 5-year limited warranty covers LED, driver and fixture
- UL and cUL listed. IC rated
- Approved for dry/damp location unless otherwise noted
- Maximum fixture weight is 15lbs per 4ft fixture
- Room-Side Maintenance for LED system
- Buy American Act compliant



Example Part #: EV6PM2-A-830HO-26'-G1-U-PL2-1-0-W

| HOUSING | SHIELDING | CRI, CCT & OUTPUT | LENGTH OR PATTERN | MOUNTING | VOLTAGE | DRIVER | CIRCUITING | BATTERY & EMERGENCY | FINISH | FIXTURE OPTIONS | CONTROLS |
|---------|-----------|-------------------|-------------------|----------|---------|--------|------------|---------------------|--------|-----------------|----------|
|---------|-----------|-------------------|-------------------|----------|---------|--------|------------|---------------------|--------|-----------------|----------|

| HOUSING | SHIELDING | CRI, CCT & OUTPUT ¹ | LENGTH OR PATTERN ² |
|---|--|--|---|
| EV6PM - Edge 6, Perimeter EV6PM2 - Edge 6, Perimeter, 2" Regress EV6PM3 - Edge 6, Perimeter, 3" Regress EV6PM4 - Edge 6, Perimeter, 4" Regress MOD - Modifications Available <i>Housing pg. 2</i> | A - Satine Lens <i>Shielding pg. 2</i> | _27_ - 2700K _30_ - 3000K _35_ - 3500K _40_ - 4000K CL - Custom Lumens CW - Custom Watts <i>Lumen Output pg. 2</i> | _ - Individual Fixture _ - Continuous Row SI - Inside Square SO - Outside Square RI_x - Inside Rectangle RO_x - Outside Rectangle UI_x - Inside U Shape UO_x - Outside U Shape LI_x - Inside L Shape LO_x - Outside L Shape <i>Length pg. 2-3</i> |

| MOUNTING ³ | VOLTAGE | DRIVER | CIRCUITING |
|--|---|--|--|
| G1(G) - 1" (15/16") T Bar G9(G) - 9/16" T Bar GB(G) - 9/16" Bevel T Bar GS(G) - Screw Slot T Bar FL(F) - 1/2" Flange NF(N) - Non Flange SF(S) - Spackle Flange <i>Mounting pg. 3</i> | U - Universal (120 thru 277V) 1 - 120V 2 - 277V 3 - 347V <i>Voltage pg. 4</i> | FSD - Factory Select Driver (1%, 0-10v) PL2 - Advance Xitanium (1%, 0-10v) OL2 - Osram (1%, 0-10v) OL4 - Osram 347v (1%, 0-10v) EE1 - eldoLED ECODErive (1%, 0-10v) ES1 - eldoLED SOLOdrive (0%, 0-10v) LH1 - Lutron Hi-lume (1%, EcoSystem) L51 - Lutron 5-Series (5%, EcoSystem) PS1 - Advance Xitanium (50%/100%) <i>Driver pg. 4</i> | 1 - Single Circuit M - Multi Circuit E - Emergency (entire fixture) N - Night Light (entire fixture) <i>Circuiting pg. 4</i> |

| BATTERY & EMERGENCY ⁴ | FINISH | FIXTURE OPTIONS | CONTROLS |
|--|---|--|--|
| 0 - None _FSG - Factory Select ALCR _GB - Bodine GTD _GI - Iota ETS DR _P - Bodine 10W _IC - Iota 10W (CEC Listed) _E - Emergency Circuit Section _N - Night Light Circuit Section _L - Life Safety Circuit Section <i>Battery and Emergency pg. 4-5</i> | W - White S - Metallic Silver BL - Textured Black BR - Bronze GR - Graphite CC - Custom Color <i>Finish pg. 5</i> | CP - Chicago Plenum GLR - Internal Fast Blow Fuse FIL - Field Cut Illuminated Extension <i>Fixture Options pg. 5</i> | <i>Pinnacle is able to accommodate different control solutions from different manufacturers. Consult Factory for more information.</i> |

¹When specifying CRI, CCT & OUTPUT the first _ is for specifying either **8** - 80CRI or **9** - 90CRI. The ending _ are for specifying output, example **HO** - High Output. See output charts for more information. ²Individual fixtures come in 2', 3', 4', 5', 6' & 8' lengths. Continuous row come in 1/8" increments. For Patterns specify pattern shape and overall dimensions. Example: L6x4: L pattern that is 6'x4'. ³Specify mounting for individual or continuous length: G1, G9, GS, FL, NF, SF for continuous rows, G1G, G9G, GSG, FLF, NFN & SFS for individual lengths. ⁴Enter quantity for Battery and Emergency, Example 2P.

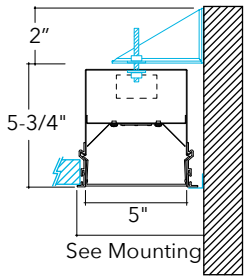
Specifications and dimensions subject to change without notice. Specification sheets that appear on pinnacle-ltg.com are the most recent version and supersede all other previously printed or electronic versions.



Housing

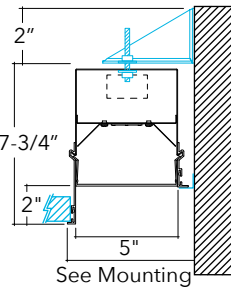
EV6PM

Edge 6, Perimeter



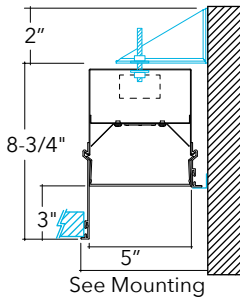
EV6PM2

Edge 6, Perimeter
2" Regress



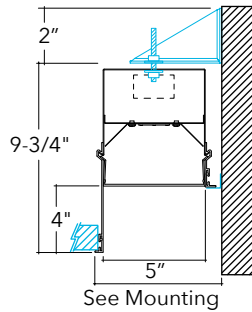
EV6PM3

Edge 6, Perimeter
3" Regress



EV6PM4

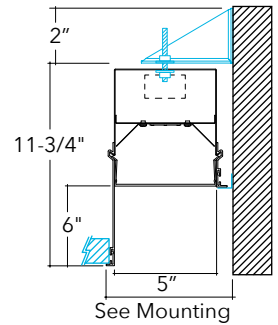
Edge 6, Perimeter
4" Regress



MOD

EV4DPM6

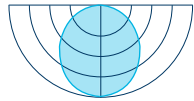
Edge 4, Perimeter
6" Regress



Shielding

A

Satine Lens



CRI, CCT & Output

- Specify either 80 or 90 CRI
- Longer lead-time may apply for 90 CRI. Consult factory
- 80 CRI = R9≥19 and 90 CRI = R9≥61

Custom Output - Lumens OR Wattage

| | | |
|-----------------|---|--|
| CL _____ | Specify CRI, CCT and desired lumens (i.e. CL835500) | Specify lumens between standard offering listed below. Lumens are specified per color temp |
| CW _____ | Specify CRI, CCT and desired wattage (i.e. CW9407) | Specify watts between standard offering listed below |

80 CRI

| | Color | Output | Watts per foot | Shielding | |
|--------------|-------|----------|-------------------|--------------------------|------|
| | | | | A Satine Lumens/ft | LPW |
| 830 | 3000K | Standard | 4.6 | 411 | 88.9 |
| 830HO | 3000K | High | 8.7 | 752 | 86.9 |
| 835 | 3500K | Standard | 4.6 | 423 | 91.5 |
| 835HO | 3500K | High | 8.7 | 774 | 89.4 |
| 840 | 4000K | Standard | 4.6 | 431 | 93.2 |
| 840HO | 4000K | High | 8.7 | 788 | 91.1 |

90 CRI

| | | | | | |
|--------------|-------|----------|-----|-----|------|
| 927 | 2700K | Standard | 4.6 | 325 | 70.2 |
| 927HO | 2700K | High | 8.7 | 594 | 68.7 |
| 930 | 3000K | Standard | 4.6 | 379 | 81.9 |
| 930HO | 3000K | High | 8.7 | 693 | 80.1 |
| 935 | 3500K | Standard | 4.6 | 381 | 82.4 |
| 935HO | 3500K | High | 8.7 | 696 | 80.5 |
| 940 | 4000K | Standard | 4.6 | 385 | 83.2 |
| 940HO | 4000K | High | 8.7 | 704 | 81.4 |

Specifications and dimensions subject to change without notice. Specification sheets that appear on pinnacle-ltg.com are the most recent version and supersede all other previously printed or electronic versions.

Designed in Denver, CO • USA | pinnacle-ltg.com | O: 303-322-5570 F: 303-322-5568

EV6DPM_LED_SPEC_DEC2021



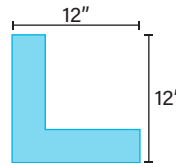
Length

- Individual units cannot be joined, end trims are factory installed and cannot be removed
- Refer to Pattern section for specification and ordering options
- Continuous Rows are made up of even and odd length fixtures; designed to fall on-grid

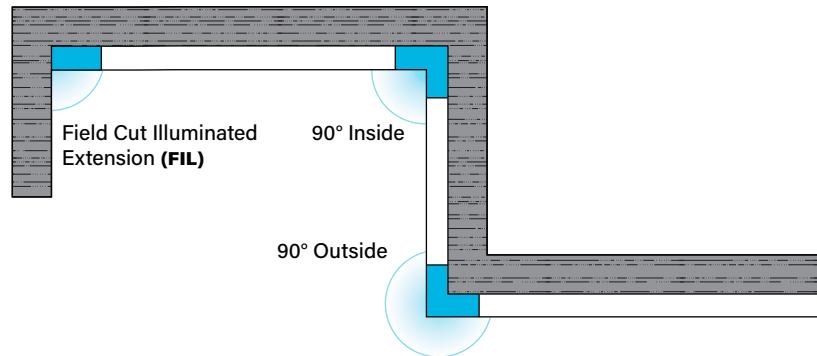
| 2 | 3 | 4 | 5 | 6 | 8 | — |
|----------------|----------------|----------------|----------------|----------------|----------------|---|
| Indiv. Fixture | Indiv. Fixture | Indiv. Fixture | Indiv. Fixture | Indiv. Fixture | Indiv. Fixture | Cont. Run Specify nominal overall row length to the 1/8" |
| 23" (584.2mm) | | | | | | |
| | 35" (889mm) | | | | | |
| | | 47" (1193.8mm) | | | | |
| | | | 59" (1498.6mm) | | | |
| | | | | 71" (1803.4mm) | | |
| | | | | | 95" (2413mm) | |
| | | | | | | Specify to the 1/8" >>> |

Pattern

- Specify pattern shape and overall dimensions (includes corner dimensions)
- 90 degree horizontal corners are 12"x12" (overall, outside dimension)
- Use with Field Cut Illuminated extensions (**FIL**) to fit to wall dimensions
- Not all drivers available with all patterns; consult factory



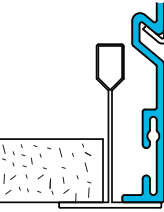
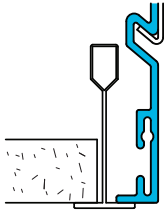
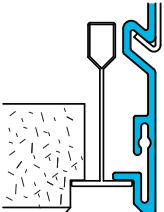
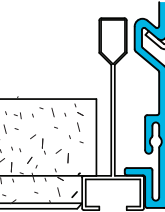
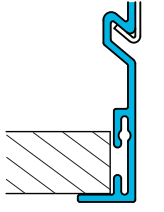
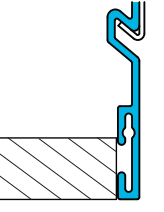
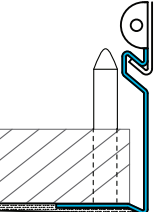
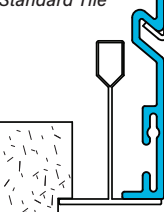
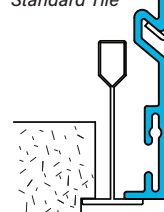
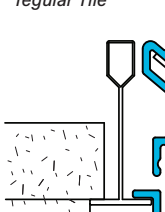
| SI_ | SO_ | RI_x_ | RO_x_ | UI_x_x_ | UO_x_x_ | LI_x_ | LO_x_ |
|--|-----|---|-------|---|---------|---|-------|
| Square, Inside (SI) or Outside (SO) Provide overall length dimension for each fixture leg | | Rectangle, Inside (RI) or Outside (RO) Provide overall length dimension for each fixture leg | | U-Shape, Inside (UI) or Outside (UO) Provide overall length dimension for each fixture leg | | L-Shape, Inside (LI) or Outside (LO) Provide overall length dimension for each fixture leg | |





Mounting

- Individual Units: specify G_G, FLF, SFS, NFN
- Continuous Units: specify G_, FL, SF, NF
- All individual units cannot be joined, end trims are factory installed and cannot be removed
- Designed to install into acoustical grid and inaccessible ceilings
- Grid retention brackets integral to housing and require mechanical attachment
- Each housing contains 4 grid retention brackets
- Tie off fixture to structure with retention wires
- Approved for dry/damp location unless otherwise noted

| G1G Individual Unit | G9G | GBG | GSG | FLF | NFN | SFS |
|---|---|--|---|--|---|---|
| G1 Continuous Run or Pattern | G9 | GB | GS | FL | NF | SF |
| 1" (15/16") T-Bar Flange to Flange: 5-13/16" (96.5mm) | 9/16" T-Bar For tegular tile installations, fixture position will not be flush to the bottom of the tile Flange to Flange: 5-13/16" (96.5mm) | 9/16" T-Bar Rail has bevel edge details. For tegular tile installations, fixture position will be flush to the bottom of the tile Flange to Flange: 5-13/16" (96.5mm) | Screw Slot & 9/16" T-Bar For 9/16" installations with tegular tile, fixture position will be flush to the bottom of the tile Flange to Flange: 5-13/16" (96.5mm) | Exposed Standard 1/2" Flange Detail Flange to Flange: 6-1/8" (104.1mm) | Metal Pan or Millwork Flange to Flange: 5-7/16" (86.6mm) | Drywall, Flangeless Detail Flange to Flange: 6-15/16" (126.5mm) |
|  Standard Tile |  Standard Tile |  Tegular Tile |  Tegular Tile |  |  |  |
|  Tegular Tile |  Tegular Tile | |  Tegular Tile | | | |

Voltage

- Some EV6 configurations will not accommodate all voltage options; consult with factory

| U | Universal |
|---|-----------|
| 1 | 120 volt |
| 2 | 277 volt |
| 3 | 347 volt |

Driver

- Standard Driver Option = PL2
- Driver Lifetime: 50,000 hours at 25°C ambient operating conditions
- For more driver options see Pinnacle Resource Guide
- Some EV6 configurations will not accommodate all driver options; consult with factory

| 0-10V Drivers | |
|-------------------|---|
| FSD | Factory Select Driver 1%, 0-10v |
| PL2 | Signify Advance Xitanium 1%, 0-10v |
| PL4 | Advance Xitanium 347v 1%, 0-10v, requires 347v |
| OL2 | Osram Optotronic, 1%, 0-10v |
| OL4 | Osram Optotronic 347v, 1% 0-10v, requires 347v option |
| EE1 | eldoLED ECOdrive 1%, 0-10v Logarithmic |
| EE2 | eldoLED ECOdrive 1%, 0-10v Linear |
| ES1 | eldoLED SOLOdrive 0-10v, 0% Logarithmic |
| ES2 | eldoLED SOLOdrive 0-10v, 0% Linear |
| DALI Drivers | |
| EE3 | eldoLED SOLOdrive .1%, DALI (logarithmic) |
| EE4 | eldoLED SOLOdrive .1%, DALI (linear) |
| OD1 | Osram Optotronic 1%, DEXAL |
| OD2 | Osram Optotronic 1%, DALI 2 Channel |
| Lutron Drivers | |
| LH1 | Lutron Hi-lume Soft-on, Fade-to-black 1%, EcoSystem, LDE1 |
| LH4 | Lutron Hi-Lume 1%, 2-wire, Lutron-LTEA2W, 120v only |
| Alternate Drivers | |
| PS1 | Signify Advance Xitanium Step Dimming 50%/100% |
| EH1 | ELV 120v only, 0-10v universal |

Specifications and dimensions subject to change without notice. Specification sheets that appear on pinnacle-ltg.com are the most recent version and supersede all other previously printed or electronic versions.

Designed in Denver, CO • USA | pinnacle-ltg.com | O: 303-322-5570 F: 303-322-5568

EV6DPM_LED_SPEC_DEC2021



How to specify Circuiting, Battery and Emergency

- 1**
- Select fixture circuiting from options below
 - Some EV6 configurations will not accommodate all circuiting options, consult with factory

Circuiting

| | |
|----------|--------------------------|
| 1 | Single Circuit |
| M | Multi Circuit |
| E | Emergency Circuit only |
| N | Night Light Circuit only |

- 2** + **3**
- Battery and emergency section options are available in addition to fixture circuit
 - Select battery and emergency section options below; factory shop drawing required
 - Some EV6 configurations will not accommodate all circuiting options, consult with factory

Battery and/or Emergency If Required

- 0** No battery or specific emergency section required

Battery

- Select battery section type if required, indicate total QTY. Example 2P
- 90 minute battery runtime; test button is remote to fixture and requires an additional drop
- No battery option available for 2' lengths
- Entire fixture is on battery for lengths up to 5'
- Half of fixture is on battery for 6" or 8' housing lengths
- For more battery options available, see Pinnacle Resource Guide

For Approximate Battery Lumen Output

- Multiply battery wattage X fixture LPW shown on Lumen Table
- 92.3 (LPW) x 10 (watts) = 923 battery lumen output

| | |
|------------|-------------------------------------|
| 0 | No battery |
| _P | Bodine 10w Integral |
| _IC | Iota 10w Integral <i>CEC Listed</i> |

Emergency

- Select emergency section type if required, indicate total QTY. Example 1E
- Combine battery and emergency section ordering codes if both options are selected

| | |
|-------------|---|
| _FSG | Factory Select ALCR, Automatic Load Control Relay |
| _GI | Iota ETS DR, Emergency Lighting Control Device |
| _GB | Bodine GTD, Emergency Lighting Control Device |
| _E | Emergency circuit section |
| _N | Night Light circuit section |
| _L | Life Safety circuit section NO THROUGH WIRE |

Battery OR Emergency Ordering Examples

- Single circuit, 10w Integral Battery Ordering Code: 1-1P
- Emergency only, 10w Integral Battery Ordering Code: E-1P
- Single circuit, GTD required Ordering Code: 1-1G

Combination Section Ordering Examples

- Single circuit, (1) 10w battery, (1) emergency section Ordering Code: 1-1P1E
- Multi circuit, (2) 10w battery, (2) emergency sections Ordering Code: M-2P2E
- Single circuit, (1) night light section Ordering Code: 1-1N

Finish

- Standard powder-coat textured white, metallic silver, textured black, graphite or bronze painted finish; consult factory for chip of standard paint finishes
- Selecting a fixture finish other than white may impact lumen output; consult factory for more information

| | |
|-----------|-----------------|
| W | White |
| S | Metallic Silver |
| BL | Textured Black |
| GR | Graphite |
| BR | Bronze |
| CC | Custom Color |

Fixture Options

- Additional options to enhance the fixture and finish of the product
- FIL has 2" min - 12" max length
- FIL Option angle range is 40° to 90°
- FIL Option is not IC rated

| | |
|------------|---------------------------------|
| CP | Chicago Plenum |
| GLR | Internal Fast Blow Fuse |
| FIL | Field Cut Illuminated Extension |

Specifications and dimensions subject to change without notice. Specification sheets that appear on pinnacle-ltg.com are the most recent version and supersede all other previously printed or electronic versions.

Designed in Denver, CO • USA | pinnacle-ltg.com | O: 303-322-5570 F: 303-322-5568

EV6DPM_LED_SPEC_DEC2021



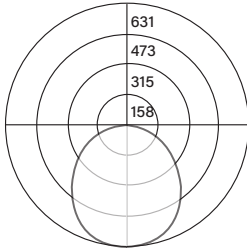
Controls

- Pinnacle is able to accommodate different control solutions from different manufacturers. Consult Factory for more information.

Photometrics

Satine Lens

| | |
|-----------|------------|
| Test # | ITL86394 |
| Catalog # | EV6A-840-4 |
| Lumens | 1724 lm |
| Watts | 18.5 W |
| Efficacy | 93 LPW |



Candela Distribution

| Vert Angle | Horizontal Angle | | | | |
|------------|------------------|------|-----|------|-----|
| | 0 | 22.5 | 45 | 67.5 | 90 |
| 0 | 631 | 631 | 631 | 631 | 631 |
| 5 | 627 | 627 | 627 | 627 | 627 |
| 10 | 619 | 616 | 616 | 616 | 615 |
| 15 | 602 | 598 | 599 | 599 | 596 |
| 20 | 582 | 575 | 578 | 575 | 574 |
| 25 | 553 | 546 | 548 | 545 | 543 |
| 30 | 521 | 514 | 516 | 512 | 508 |
| 35 | 483 | 476 | 477 | 473 | 470 |
| 40 | 442 | 436 | 436 | 432 | 429 |
| 45 | 399 | 393 | 393 | 389 | 386 |
| 50 | 354 | 350 | 348 | 344 | 343 |
| 55 | 308 | 304 | 303 | 300 | 298 |
| 60 | 261 | 257 | 256 | 254 | 253 |
| 65 | 213 | 211 | 209 | 207 | 207 |
| 70 | 167 | 165 | 163 | 162 | 162 |
| 75 | 121 | 119 | 118 | 118 | 118 |
| 80 | 78 | 77 | 76 | 75 | 75 |
| 85 | 38 | 37 | 37 | 36 | 36 |
| 90 | 0 | 0 | 0 | 0 | 0 |

Luminance Data (cd/sq.m)

| Angle In Degrees | Average 0-Deg | Average 45-Deg | Average 90-Deg |
|------------------|---------------|----------------|----------------|
| 45 | 3722 | 3666 | 3599 |
| 55 | 3535 | 3477 | 3418 |
| 65 | 3321 | 3257 | 3225 |
| 75 | 3087 | 3009 | 3009 |
| 85 | 2851 | 2774 | 2697 |

For all available IES files, please visit our website at pinnacle-ltg.com. Photometry testing in accordance to IESNA-LM-79-08 at an NVLAP accredited testing laboratory. Testing conducted at 25°C ambient conditions

Applications & Certificates

Housing: Extruded aluminum trim with formed cold rolled 20 gauge steel back box housing. Highly reflective die-formed white painted steel reflector.

Shielding: Diffuse snap-in acrylic lens, removable for maintenance.

Mounting: Evolution is designed to install into acoustical grid and inaccessible ceilings. Specify GXG, FLF, SFS, NFN for individual, unjoinable units (individual units will fall on-grid). Specify GX, FL, SF, NF for continuous runs (runs designed to fall on-grid). Grid retention brackets are integral to housing. Each housing contains 4 grid retention brackets. Consult factory for detailed installation instructions. Maximum fixture weight is 15lbs per 4' fixture.

LED: 25°C test environment. Lumen output/wattage has a margin of +/- 5%; 2' or 3' lengths may have a greater wattage deviation. All luminaire configurations tested in accordance with IES LM-79. Diodes tested in accordance with IES LM-80. Lifetime calculated using IES TM-21. Minimum lifetime greater than 60,000 hours. Lifetime Projection L70 = 135,200 hours and L90 = 40,300 hours. MacAdam 3-Step Ellipses. Not all products are Lighting Facts listed. For all available IES files, please visit our website at pinnacle-ltg.com.

CRI, CCT & Lumen Output: Two lumen packages available. Standard and High (HO). Custom outputs are available. Specify custom lumens or watts between standard offering listed on CRI, CCT & Output page. 80 CRI is available for 3000K, 3500K, and 4000K. 90 CRI is available for 2700K, 3000K, 3500K, and 4000K. 80 CRI = R9≥19 and 90 CRI = R9≥61.

Voltage: Universal (U), 120 volt (1), 277 volt (2) and 347 volt (3) options available. Must specify OL4 in Driver section when 347 volt (3) is selected. Some Evolution configurations will not accommodate all voltage options; consult with factory.

Driver: Standard Driver Option is Advance Xitanium 0-10V, 1% = PL2. Electronic driver, power factor is >0.9 with a THD <20%. Driver Lifetime: 50,000 hours at 25°C ambient operating conditions. Ambient operating range: -20°F/-30°C to 98°F/37°C. For more driver options, see Pinnacle Resource Guide. Some EDGE configurations will not accommodate all driver options.

Circuiting: Select from single circuit (1), Multi circuit - For multiple circuiting and zone control, requires factory shop drawing (M), Emergency circuit (E), Life Safety (L) or Night Light circuit (N). For emergency circuiting situations that require no through wire or circuit separation, Life Safety Circuit should be selected. This will provide a separate power feed and only the Life Safety Circuit in that section. Some EDGE configurations will not accommodate all circuiting options; consult with factory.

Battery & Emergency: Select battery or emergency options if required. If battery or emergency option is not required, enter 0. Battery duration is 90 minutes as standard. Test button is remote to fixture. For more Battery options, see Pinnacle Resource Guide.

Finish: Standard powder-coat textured white, metallic silver, textured black, graphite or bronze painted finish; consult factory for chip of standard paint finishes or for additional custom color and finish options.

Controls: Consult factory.

Labels: UL and cUL Listed. Standard and HO lumen packages are IC Rated, approved for dry/damp location unless otherwise noted.

Fixture Weight: Maximum fixture weight is 15lbs per 4' fixture.

Buy American Act Compliant

Warranty: Evolution LED offered with a 5-year limited warranty. Covers LED, driver and fixture.