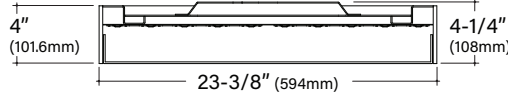


LiFT LF24DI

2x4 Direct/Indirect Suspended Architectural Square

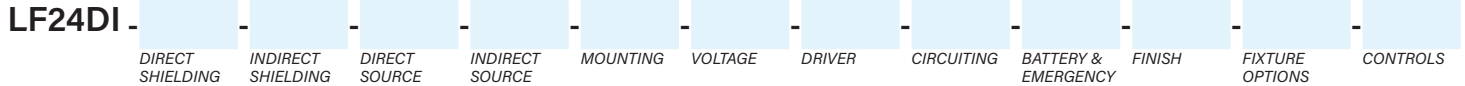


Key Features

- Formed and welded extruded aluminum housing for seamless finish with 1/4" trim
- Aluminum top cover conceals all electrical components
- Highly reflective die-formed white painted steel reflector
- Fabricated, captive lens with 3 lens positions
- LiFT offered with a 5-year limited warranty. Covers LED, driver and fixture
- ETL Listed conforming to UL1598 in US and CSA 250 in Canada
- Maximum fixture weight is 50 lbs
- Room-side maintenance for LED system
- Buy American Act compliant



Example Part #: LF24DI-A-830HO-830-AC448JB-U-PL2-1-0-W



| --- | LO | ----- | ----- |
|---|---|--|---|
| DIRECT SHIELDING | INDIRECT SHIELDING | DIRECT SOURCE ¹ | INDIRECT SOURCE ¹ |
| A - Flush Satine Lens AL - Drop Satine Lens AR - Regress Satine Lens <i>Direct Shielding pg. 2</i> | LO - Clear Lens Overlay <i>Indirect Shielding pg. 2</i> | _27_ - 2700K _30_ - 3000K _35_ - 3500K _40_ - 4000K CL - Custom Lumens CW - Custom Watts <i>Direct Source pg. 2</i> | _27_ - 2700K _30_ - 3000K _35_ - 3500K _40_ - 4000K CL - Custom Lumens CW - Custom Watts <i>Indirect Source pg. 3</i> |
| ----- | --- | --- | - |
| MOUNTING ² | VOLTAGE | DRIVER | CIRCUITING |
| AS4 - 4 AC, Straight, JB or ST AC4 - 4 AC, Center Mount, JB or ST AH4 - 4 AC w/hub, to JB or ST PP - Pendant Pipe to JB or ST PS - Pendant Swivel to JB or ST <i>Mounting pg. 3</i> | U - Universal (120 thru 277V) 1 - 120V 2 - 277V 3 - 347V <i>Voltage pg. 4</i> | PL2 - Advance Xitanium (1%, 0-10v) EE1 - eldoLED ECOdrive (1%, 0-10v) ES1 - eldoLED SOLOdrive (0%, 0-10v) LH1 - Lutron Hi-lume (1%, EcoSystem) OL2 - Osram Optotronics (1%, 0-10v) OL4 - Osram Optotronics 347V (1%, 0-10v) ND - Non-Dimming <i>Driver pg. 4</i> | 1 - Single Circuit 2 - Dual Circuit E - Emergency (<i>entire fixture</i>) N - Night Light (<i>entire fixture</i>) <i>Circuiting pg. 4</i> |
| --- | --- | ----- | ----- |
| BATTERY & EMERGENCY | FINISH | FIXTURE OPTIONS | CONTROLS ³ |
| 0 - None 1PB - Bodine 10W <i>Battery & Emergency pg. 4</i> | W - White S - Metallic Silver BL - Textured Black BR - Bronze GR - Graphite CC - Custom Color <i>Finish pg. 4</i> | AM - Antimicrobial Paint GMF - Slow Blow Fusing <i>Fixture Options pg. 4</i> | DLMFC - Wattstopper DLM (<i>wired</i>) ENLI - Enlighted IOT (<i>remote</i>) ENLC - Enlighted Connected Lighting (<i>remote</i>) <i>Controls pg. 5</i> |

¹When specifying SOURCE the first _ is for specifying either **8** - 80CRI, **9** - 90CRI. The ending ___ are for specifying output, example **HO** - High Output. See output charts for more information. ²Example: AC4120JB. AC4 = 4 Aircraft Cables, 120 = 120" long cables, JB = connects to junction box. Standard AC cable lengths are 48" and 120", field adjustable. Standard pendant lengths are 12", 18", or 24". ³Controls can only be used with Single Circuit (1) or Emergency Circuit (E), cannot be used with any battery options. See Controls chart on page 5 for driver options and more information.

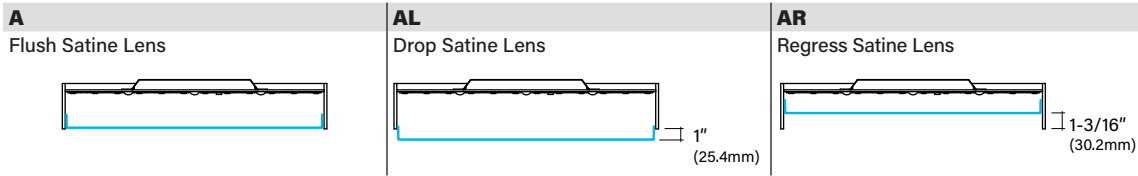
Specifications and dimensions subject to change without notice. Specification sheets that appear on pinnacle-ltg.com are the most recent version and supersede all other previously printed or electronic versions.



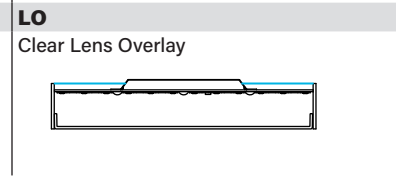
Shielding

- Fabricated, captive lens with 3 lens positions
- Highly reflective white reflectors maintain uniform lens brightness

Direct Shielding



Indirect Shielding



Direct Source: White LED

- Specify either 80 or 90 CRI
- Longer lead-time may apply for 90 CRI. Consult factory
- 80 CRI = R9≥19 and 90 CRI = R9≥61

Custom Output- Lumens OR Wattage

| | | |
|-----------------|--|--|
| CL _____ | Specify CRI, CCT and desired lumens (i.e. CL8352000) | Specify lumens between standard offering listed below. Lumens are specified per color temp |
| CW _____ | Specify CRI, CCT and desired wattage (i.e. CW94020) | Specify watts between standard offering listed below |

80 CRI

| | Color | Lumens | Shielding A, AL, AR Satine Lens Watts | LPW |
|--------------|-------|--------|--|-----|
| 830LO | 3000K | 4658 | 37.3 | 125 |
| 830MO | 3000K | 7499 | 63.1 | 119 |
| 830HO | 3000K | 10261 | 90.6 | 113 |
| 835LO | 3500K | 4824 | 37.4 | 129 |
| 835MO | 3500K | 7862 | 63.1 | 125 |
| 835HO | 3500K | 10899 | 90.6 | 120 |
| 840LO | 4000K | 5055 | 37.5 | 135 |
| 840MO | 4000K | 8150 | 63.5 | 128 |
| 840HO | 4000K | 11224 | 91.5 | 123 |

90 CRI

| | | | | |
|--------------|-------|------|------|-----|
| 927LO | 2700K | 3783 | 37.5 | 101 |
| 927MO | 2700K | 6099 | 63.4 | 96 |
| 927HO | 2700K | 8370 | 90.9 | 92 |
| 930LO | 3000K | 4033 | 37.5 | 108 |
| 930MO | 3000K | 6512 | 63.4 | 103 |
| 930HO | 3000K | 8954 | 90.9 | 98 |
| 935LO | 3500K | 4033 | 37.5 | 108 |
| 935MO | 3500K | 6512 | 63.4 | 103 |
| 935HO | 3500K | 8954 | 90.9 | 98 |
| 940LO | 4000K | 4247 | 37.3 | 114 |
| 940MO | 4000K | 6839 | 63.3 | 108 |
| 940HO | 4000K | 9378 | 91.2 | 103 |

Specifications and dimensions subject to change without notice. Specification sheets that appear on pinnacle-ltg.com are the most recent version and supersede all other previously printed or electronic versions.



Indirect Source: White LED

- Specify either 80 or 90 CRI
- Longer lead-time may apply for 90 CRI. Consult factory
- 80 CRI = R9≥19 and 90 CRI = R9≥61
- Indirect has clear lens overlay

Custom Output- Lumens OR Wattage

| | | |
|-----------------|--|--|
| CL _____ | Specify CRI, CCT and desired lumens (i.e. CL8352000) | Specify lumens between standard offering listed below. Lumens are specified per color temp |
| CW _____ | Specify CRI, CCT and desired wattage (i.e. CW94020) | Specify watts between standard offering listed below |

80 CRI

| | Color | Lumens | LO Clear Lens Overlay | |
|--------------|-------|--------|--------------------------|-----|
| | | | Watts | LPW |
| 830LO | 3000K | 4055 | 28.4 | 143 |
| 830MO | 3000K | 5962 | 41.2 | 145 |
| 830HO | 3000K | 7791 | 55.8 | 140 |
| 835LO | 3500K | 4223 | 28.4 | 149 |
| 835MO | 3500K | 6220 | 41.2 | 151 |
| 835HO | 3500K | 8143 | 55.7 | 146 |
| 840LO | 4000K | 4338 | 28.3 | 153 |
| 840MO | 4000K | 6380 | 41.2 | 155 |
| 840HO | 4000K | 8284 | 55.7 | 149 |

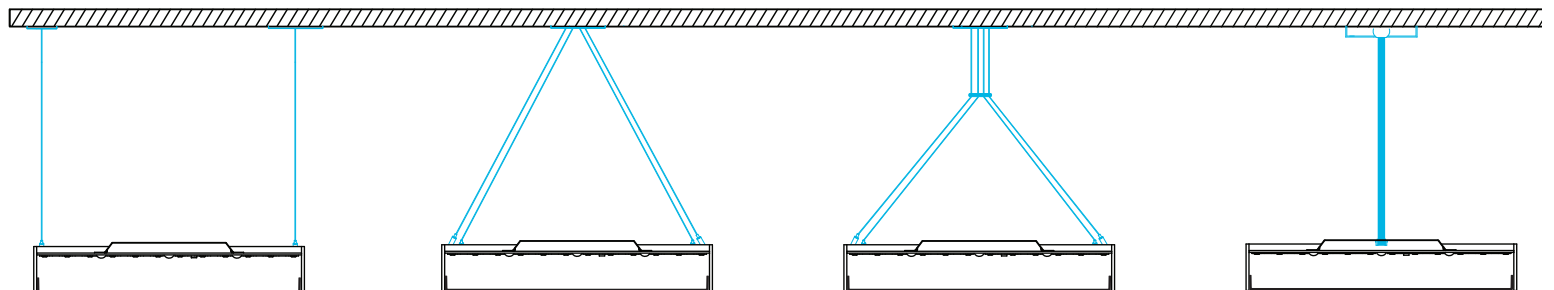
90 CRI

| | | | | |
|--------------|-------|------|------|-----|
| 927LO | 2700K | 3358 | 28.4 | 118 |
| 927MO | 2700K | 4939 | 41.2 | 120 |
| 927HO | 2700K | 6413 | 55.8 | 115 |
| 930LO | 3000K | 3536 | 28.4 | 125 |
| 930MO | 3000K | 5200 | 41.2 | 126 |
| 930HO | 3000K | 6752 | 55.8 | 121 |
| 935LO | 3500K | 3536 | 28.4 | 125 |
| 935MO | 3500K | 5200 | 41.2 | 126 |
| 935HO | 3500K | 6752 | 55.8 | 121 |
| 940LO | 4000K | 3761 | 28.4 | 132 |
| 940MO | 4000K | 5531 | 41.2 | 134 |
| 940HO | 4000K | 7182 | 55.8 | 129 |

Mounting

- Aircraft cables and pendants mount directly to a standard junction box or structure
- Canopies and pendants match fixture finish, power cords are white, grey, or black depending on fixture finish. See Finish section for additional details.
- Must specify overall pendant length of 12", 18" or 24"
- Must specify cable length, either 48" or 120" standard, field adjustable
- Tie off fixture to structure with retention wires
- Maximum fixture weight is 50 lbs

| | | | |
|---|--|---|---|
| AS4_JB 4 AC cables straight, fixture to J-Box | AC4_JB 4 AC cables, center mount, fixture to J-Box | AH4_JB 4 AC cables with hub, fixture to J-Box | PP_JB Pendant Pipe to J-Box |
| AS4_ST 4 AC cables straight, fixture to Structure | AC4_ST 4 AC cables, center mount, fixture to Structure | AH4_ST 4 AC cables with hub, fixture to Structure | PS_JB Pendant Swivel to J-Box |
| | | | PP_ST Pendant Pipe to Structure |
| | | | PS_ST Pendant Swivel to Structure |



Specifications and dimensions subject to change without notice. Specification sheets that appear on pinnacle-ltg.com are the most recent version and supersede all other previously printed or electronic versions.



Voltage

- Some LIFT configurations will not accommodate all voltage options; consult with factory

| | |
|----------|-----------|
| U | Universal |
| 1 | 120 volt |
| 2 | 277 volt |
| 3 | 347 volt |

Driver

- Standard Driver Option = PL2
- Driver Lifetime: 50,000 hours at 25°C ambient operating conditions
- For more Driver options, see Pinnacle Resource Guide on download pages at pinnacle-ltg.com
- Some LIFT configurations will not accommodate all driver options; consult with factory

| | |
|------------|---|
| PL2 | Advance Xitanium 1%, 0-10v |
| EE1 | eldoLED ECOdrive 1%, 0-10v Logarithmic |
| EE2 | eldoLED ECOdrive 1%, 0-10v Linear |
| ES1 | eldoLED SOLOdrive 0%, 0-10v Logarithmic |
| ES2 | eldoLED SOLOdrive 0%, 0-10v Linear |
| LH1 | Lutron Hi-lume Soft-on, Fade-to-black 1%, EcoSystem, LDE1 |
| OL2 | Osram Optotronic 1%, 0-10v |
| OL4 | Osram Optotronic 347v 1%, 0-10v, requires 347v |
| ND | Non-Dimming |

Circuiting

- Select fixture circuiting from options below
- Some LIFT configurations will not accommodate all circuiting options; consult with factory

| | |
|----------|--------------------------|
| 1 | Single Circuit |
| 2 | Dual Circuit |
| E | Emergency Circuit only |
| N | Night Light Circuit only |

Battery & Emergency

- Select battery or emergency options if required
- Battery duration is 90 minutes
- Test button is integral to fixture
- For more Battery options, see Pinnacle Resource Guide on download pages at pinnacle-ltg.com

| | |
|------------|---------------------|
| 0 | No Battery |
| 1PB | Bodine 10w Integral |

For Approximate Battery Lumen Output

- Multiply battery wattage X fixture LPW shown on Lumen Table
- 10 (watts) x 92.3 (LPW) = 923 battery lumen output

Battery & Emergency Ordering Examples

- Single circuit, 10w integral battery Ordering Code: 1-1P
- Emergency circuit only, 10w integral battery Ordering Code: E-1P

Finish

- Standard powder-coat textured white, metallic silver, textured black, graphite or bronze painted finish; consult factory for chip of standard paint finishes
- Selecting a fixture finish other than white may impact lumen output; consult factory for more information

| | |
|-----------|---|
| W | White (<i>white cord/white canopy</i>) |
| S | Metallic Silver (<i>grey cord/silver canopy</i>) |
| BL | Textured Black (<i>black cord/black canopy</i>) |
| BR | Bronze (<i>white cord/bronze canopy</i>) |
| GR | Graphite (<i>white cord/graphite canopy</i>) |
| CC | Custom Color (<i>white cord/color match canopy</i>) |

Fixture Options

- Additional options to enhance the fixture and finish of the product

| | |
|------------|-------------------------|
| AM | Antimicrobial Paint |
| GMF | Internal Slow Blow Fuse |

Specifications and dimensions subject to change without notice. Specification sheets that appear on pinnacle-ltg.com are the most recent version and supersede all other previously printed or electronic versions.

Designed in Denver, CO • USA | pinnacle-ltg.com | O: 303-322-5570 F: 303-322-5568

LF24DI_SUSPENDED_SPEC_AUG2021



Controls

- Pinnacle Lighting offers easy to specify network control solutions that connect to an intelligent centralized system to maximize lighting energy efficiencies or integral sensors for individual fixture control
- Pinnacle Lighting fixtures ship technology ready; commissioning by others
- Controls can only be used with Single Circuit (1) or Emergency Circuit (E)
- Contact factory for any non-standard configurations for layout, placement, or EM options
- One sensor per housing typical, contact factory for more information

| | Solution | Components | Network/Sensor | Connection | RQD Drivers | Limitation |
|--------------|------------------------------|------------|-----------------------------------|-----------------------|-------------|-----------------------------|
| DLMFC | Legrand Wattstopper DLM | LMFC-011 | Digital Lighting Management (DLM) | Wired, two RJ45 ports | OL2, OL4 | None |
| ENLI | Enlighted IOT | CU-4E | Enlighted, Remote | Enlighted Cable | Any 0-10v | Not available with 347 volt |
| ENLC | Enlighted Connected Lighting | CU-4E | Enlighted, Remote | Enlighted Cable | Any 0-10v | Not available with 347 volt |

Approvals & Certifications

Construction: Formed 20 gauge cold rolled steel housing. Highly reflective die-formed white painted reflector. Wiring access available on top of housing. Lens is removable for room-side maintenance of lens, driver and LED boards.

Shielding: Single piece fabricated diffuse acrylic lens creating a fully luminous fixture.

Mounting: Aircraft cable and Pendant mount available. Aircraft Cable and pendant supplied with 5" (127mm) canopies. Refer to installation instructions for appropriate ceiling detail. Maximum fixture weight is 50 lbs.

LED: 25°C test environment. Lumen output/wattage has a margin of +/- 5%. All luminaire configurations tested in accordance with IES LM-79. Diodes tested in accordance with IES LM-80. Lifetime calculated using IES TM-21. Minimum lifetime greater than 60,000 hours. L70 = 146,500 hours and L90 = 45,000 hours. MacAdam 3-Step Ellipses. Not all products are Lighting Facts listed. For all available IES files, please visit our website at pinnacle-ltg.com.

Color & Lumen Output: Three lumen packages available. Low (LO), Middle (MO) and High (HO). Custom outputs are available. Specify custom lumens or watts between standard offering listed on CRI, CCT & Output page. 80 CRI is available for 3000K, 3500K, and 4000K. 90 CRI is available for 2700K, 3000K, 3500K, and 4000K. 80 CRI = R9≥19 and 90 CRI = R9≥61.

Voltage: Universal (U), 120 volt (1), 277 volt (2) and 347 volt (3) options available. Must specify OL4 in Driver section when 347 volt (3) is selected. Some LiFT configurations will not accommodate all voltage options; consult with factory.

Driver: Standard Driver Option is Advance 0-10V, 1% = PL2. Electronic driver, Power factor is >0.9 with a THD <20%. Driver Lifetime: 50,000 hours at 25°C ambient operating conditions. For more driver options, see Pinnacle Resource Guide on download pages at

pinnacle-ltg.com. Some LiFT configurations will not accommodate all driver options.

Circuiting: Select from single circuit (1), dual circuit (2), Emergency circuit (E) or Night Light circuit (N). Some LiFT configurations will not accommodate all circuiting options; consult with factory.

Battery & Emergency: Select battery or emergency options if required. If battery or emergency option is not required, enter 0. Battery duration is 90 minutes as standard. Test button is integral to fixture. For more Battery options, see Pinnacle Resource Guide on download pages at pinnacle-ltg.com.

Finish: Standard powder-coat textured white, metallic silver, textured black, graphite, or bronze painted finish, consult factory for chip of standard paint finishes. Contact factory for additional custom color and finish options.

Controls: DLM utilizes wired network connections for digital control through switching and dimming with 0-10v LED drivers. Enlighted Smart Sensor provides multi-functionality including daylight harvesting and PIR occupancy; for IOT platform using 0-10v LED drivers. Enlighted Smart Sensor provides multi-functionality including daylight harvesting and PIR occupancy; for Connected platform using 0-10v LED drivers.

Labels: ETL Listed conforming to UL1598 in US and CSA 250 in Canada. Approved for dry/damp location unless otherwise noted.

Fixture Weight: 50 lbs maximum.

Buy American Act Compliant

Warranty: LiFT LED offered with a 5-year limited warranty. Covers LED, driver and fixture.