

**CONSTRUCTION** Extruded aluminum housing with cold rolled steel ends.

**REFLECTOR** Highly reflective die-formed specular anodized aluminum with asymmetric distribution.

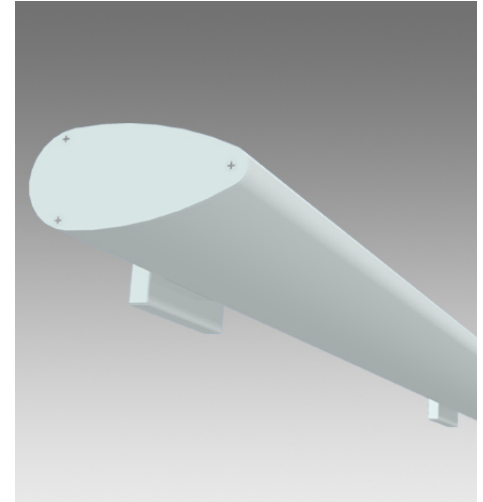
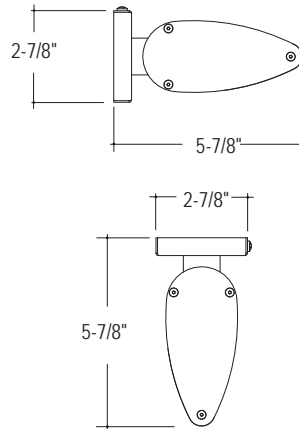
**LENS** Standard indoor fluorescent luminaires are "open" without lensing unless otherwise specified.

**ELECTRICAL** Standard T5 and T5HO: Program start 120/277 volt integral electronic ballast with less than 10% THD. Standard T8: Instant start 120/277 volt electronic ballast with less than 10% THD. Through wiring with quick connects standard. Standard single circuit. Each ballast provided with disconnects to meet luminaire disconnect code requirement.

**MOUNTING** Galvanized plate mounts to structure allowing for easy installation. Fixture head is fixed. Mounting cover plate is painted to match fixture housing unless otherwise specified.

**FINISH** Standard powder-coat textured white painted finish. Consult factory for custom color and finishes.

**LABELS** cUL Listed and approved for dry/damp location.



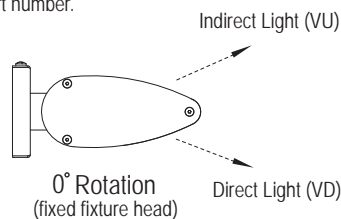
**LUMINAIRE SPECIFICATION**

Sample Catalog #: VU-1T5-24'-S-120-1C-W

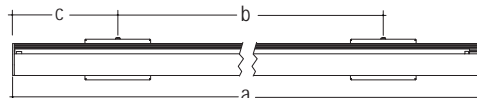
V_-	---	---	S-	---	---	---	---
PRODUCT	LAMPS	LENGTH	MOUNTING	VOLTAGE	CIRCUITING	FINISH	OPTIONS
VU- Vertigo Linear indoor luminaire, indirect (UP)	1T5- (1) T5 1T5HO- (1) T5HO 2T5- (2) T5 2T5HO- (2) T5HO 1T8- (1) T8	Individual Units 3- 3' 4- 4' 6- 6' 8- 8'	S- Surface Mount	120- 120 V 277- 277 V 347- 347 V <sup>1</sup> UNV- UNV <sup>1</sup> (120/277)	1C- Single Circuit 2C- Dual Circuit <sup>2</sup> 1D- Single Circuit Dimming <sup>2</sup> 2D- Dual Circuit Dimming <sup>2</sup> 1B- Single Circuit with Battery Pack <sup>2</sup> 2B- Dual Circuit with Battery Pack <sup>2</sup> 1E- Single Circuit with Emergency Circuit <sup>2</sup> 2E- Dual Circuit with Emergency Circuit <sup>2</sup>	W- Matte White S- Metallic Silver CC- Custom Color	B- Baffle <sup>3</sup> A- Acrylic Lens <sup>4</sup>
VD- Vertigo Linear indoor luminaire, direct (DOWN)		Continuous Runs xx'- Specify nominal overall row length in 1' increments		<sup>1</sup> 347 volt and UNV not available with battery packs.	<sup>2</sup> Some Vertigo configurations will not accommodate all electrical options. Consult factory.		<sup>3</sup> Baffle to match housing finish. <sup>4</sup> Baffle and Lens not available together.

**ROTATION**

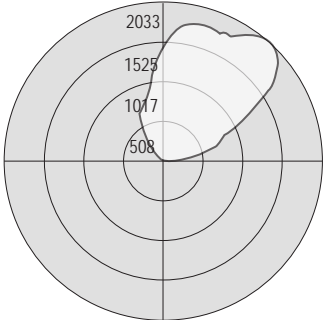
Fixture head is in a fixed position. Fixture attaches to mounting plate and can be mounted as a direct (VD) or indirect (VU) light source. Specify up or down light source in the Product section of the part number.



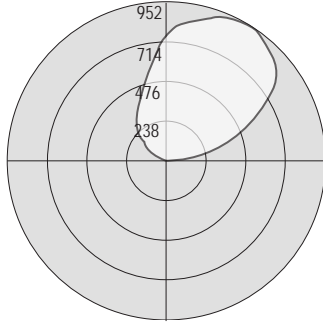
**MOUNTING DIMENSION**



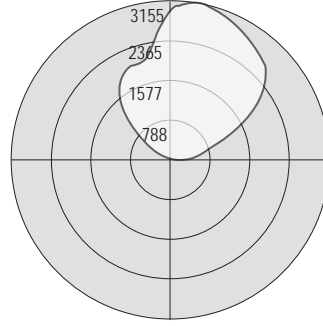
	Individual Units			
	3'	4'	6'	8'
a. Nominal Length	36-1/4"	48-1/4"	72-1/4"	96-1/4"
b. Mount Spacing	18"	24"	36"	48"
c. Inset Spacing	9-1/8"	12-1/8"	18-1/8"	24-1/8"



Test # 202270  
Lamp: (1) 54 Watt T5HO  
Total Luminaire Efficiency: 95.5%



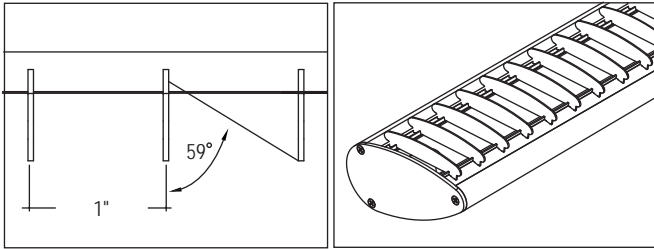
Test # 202271  
Lamp: (1) 32 Watt T8  
Total Luminaire Efficiency: 77.8%



Test # 202272  
Lamp: (2) 54 Watt T5HO  
Total Luminaire Efficiency: 90.0%

FEATURES AND OPTIONS

• EXTERNAL BAFFLE



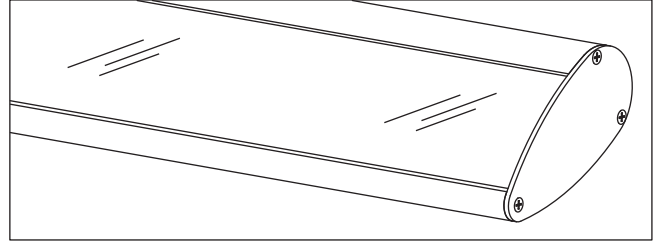
**Application:** External Baffle controls glare and reduces light output by 15%. Recommended when lengthwise shielding of lamp is required.

**Construction:** Curved baffles are high reflective white painted aluminum blades. Blade height is 5/8" and spaced 1" on center. Baffles are field installed and feature a snap in attachment allowing for easy lamp replacement.

**Ordering Information:** Indicate "B" in the Options section of the part number. (Sample Catalog #: V-1T5HO-4-S-120-W-B).

**Restriction:** External Baffle is not available in conjunction with Acrylic Lens.

• ACRYLIC LENS



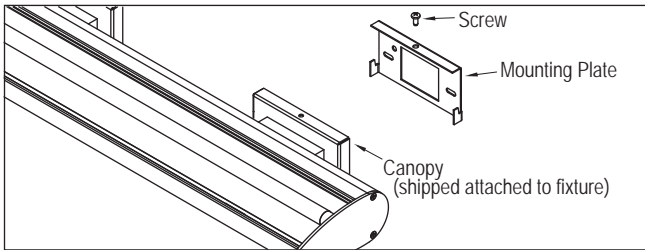
**Application:** Acrylic lens prevents particle ingress for interior environments.

**Construction:** One-piece UV stabilized curved linear prismatic acrylic lens. Acrylic lens is removable allowing for easy lamp replacement.

**Ordering Information:** Indicate "A" in the Options section of the part number. (Sample Catalog #: V-1T5HO-4-S-120-W-A).

**Restriction:** Acrylic lens is not available in conjunction with External Baffle.

• MOUNTING DETAIL



**Assembly:** Mounting plate attaches to horizontal switch box. Canopy fits over mounting plate and is secured through the top using one screw.

Individual Length	Nominal Row Length																																										
	3	4	6	7	8	9	10	11	12	13	14	15	16	17	18	19	20	21	22	23	24	25	26	27	28	29	30	31	32	33	34	35	36	37	38	39	40	41	42				
3	1			1		3	2	1		1	2	1		1		1		3		1		1		1		1		1		1		1		1		1		1		1		1	
4		1		1			1	2		1		1								2			1		1	1		1			1		1		1	1		1		1		1	
6			1							2	1					1	3		2	2	1	2		1	1			1	1			1	1			1	1			1	1		1
8					1								1	1	2	1		2	1		2		3	2	2	3	3	2	3	3	4	3	3	4	4	3	4	4	5	4	4		4