

CERAMIC METAL HALIDE / Ceiling Semi-Recessed

For Indoor Lighting Applications

CONSTRUCTION Extruded aluminum housing, die cast gasketed end caps. Luminaire head mechanically attaches to cold rolled steel recessed box in one of four field adjustable positions.

REFLECTOR Highly reflective specular anodized aluminum.

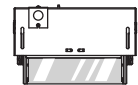
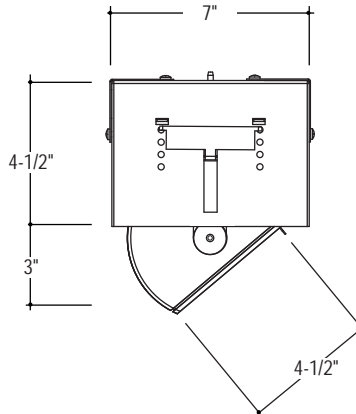
LENS Micro-prismatic tempered glass and die-formed aluminum trim (spring secured) for toolless lamp access.

ELECTRICAL Standard electronic integral ballast.

MOUNTING Fully rotatable head mounts to structure in numerous configurations. See back for dimensions and details.

FINISH Powder coat white painted finish, consult factory for custom colors and finishes.

LABELS cUL Listed, approved for dry/damp location unless otherwise noted.



- 9"
- (1) 39W T6,G12
 - (1) 70W T6,G12
 - (1) 150W T6,G12

LUMINAIRE SPECIFICATION

Sample Catalog #: S5-M39G-SI-120-W

S5-

M _____

W-

__

HOUSING

LAMP/ FIXTURE LENGTH

MOUNTING

VOLTAGE

FINISH

OPTIONS

S5-Summit 5", indoor luminaire, Semi-recessed wall wash, cUL dry/damp label.

LAMP	LENGTH
M39G- (1) 39W T6,G12	9"
M70G- (1) 70W T6,G12	9"
M150G- (1) 150W T6,G12	9"

SI- Semi-recessed, Integral Ballast

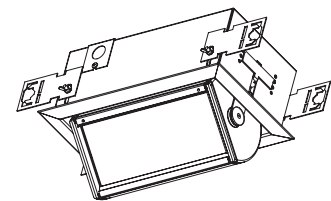
- 120-** 120 Volt
- 277-** 277 Volt
- 208-** 208 Volt*

*Available for Integral ballast only

W- White

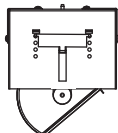
- B-** Baffle*
- V-** Visor*

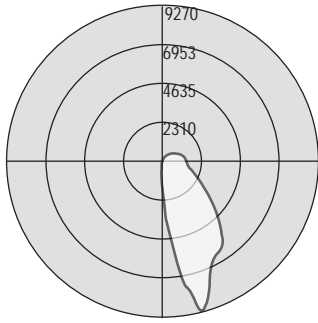
*Color will match housing unless otherwise specified



MOUNTING (Integral Ballast)

SI-Semi-Recessed Ceiling (Electronic Only)





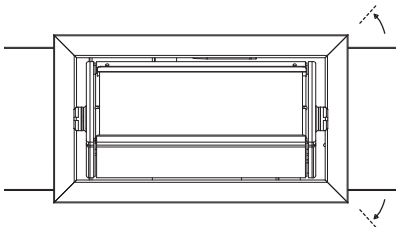
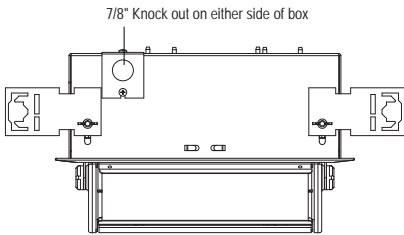
Test #15019
 Catalog # S5-M150G-SI-1-V
 Total Luminaire Efficiency = 76.6%

Zone	Lumens	%Lamp	%Fixt
0-30	2658.4	19	24.8
0-40	4386.75	31.3	40.9
0-60	7154.94	51.1	66.7
0-90	9264.79	66.2	86.4
90-120	1153.77	8.2	10.8
90-130	1319.22	9.4	12.3
90-150	1446.23	10.3	13.5
90-180	1454.32	10.4	13.6
0-180	10719.12	76.6	100

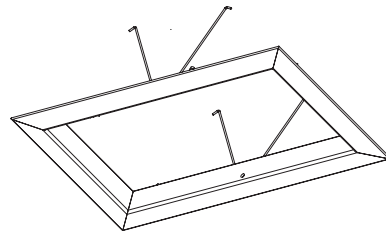
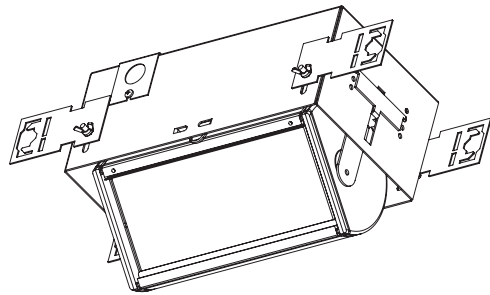
	0	45	90	135	180
0	1288	1288	1288	1288	1288
5	3917	3011	1329	576	466
15	9270	7472	1414	145	23
25	6853	7863	1576	9	1
35	6313	5609	1360	0	0
45	4654	4664	669	1	0
55	3243	3234	354	1	0
65	2408	2106	226	0	0
75	1739	1543	147	0	0
85	1456	1097	88	0	0
90	1428	1020	68	0	0
95	1377	991	45	0	0
105	1246	848	17	0	0
115	996	601	2	0	0
125	647	400	0	0	0
135	426	256	0	0	0
145	260	114	0	0	0
155	87	10	0	0	0
165	1	0	0	0	0
175	0	0	0	0	0
180	0	0	0	0	0

MOUNTING

Heavy gauge metal tabs allow mounting to any ceiling type. Toolless adjustment of tabs allow for easy field adjustment of luminaire for a clean fit to sheet rock and lay-in ceilings



Metal tabs easily bend enabling luminaire to adapt to bar hangers from either direction



After luminaire is installed, aluminum frame easily mounts to luminaire cleanly with torsion springs.