

# Ridge



## Shielding Options



Ridge<sup>2</sup> Louver



Ridge<sup>2</sup> Lens



Ridge Louver

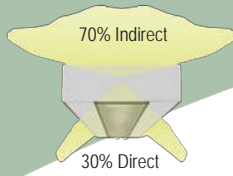


Ridge Lens

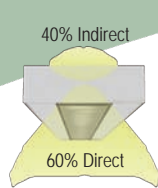
## Light Distribution Options (DL\_\_)

Ridge offers multiple distribution options allowing you to customize the lighting to your project's requirement. Light Distribution kits easily install over the lamps and are available from 60% downlight up to 100% downlight. Available on both the Ridge and Ridge<sup>2</sup> parabolic louver housing styles.

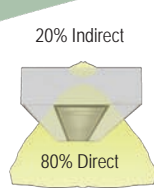
Standard Distribution:



DL60:



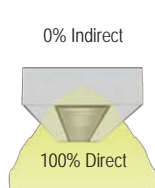
DL80:



DL90:



DL100:



## Lamp Barriers (LB\_\_)

Isolate uplight and downlight using lamp barriers. Utilize with dual circuit switching for the ultimate in light control. Lamp barriers are the perfect solution for projects with multiple lighting requirements. Available with Ridge and Ridge<sup>2</sup> with parabolic louver.



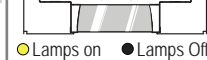
Direct Lighting



For Direct Lighting, the outside lamps are turned on for general purpose lighting.



Indirect Lighting

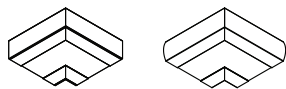
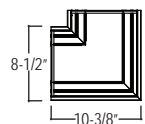


Indirect Lighting allows occupants to easily take notes while still viewing presentations.

## Corners

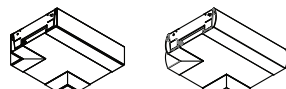
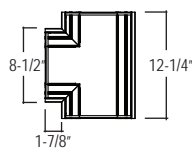
Ridge and Ridge<sup>2</sup> corners are available in three different configurations for endless possibilities in layout design.

90 Degree Corner

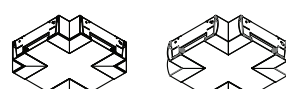
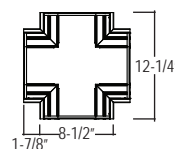


Shown with Ridge<sup>2</sup> corner dimensions

T Connector



X Connector



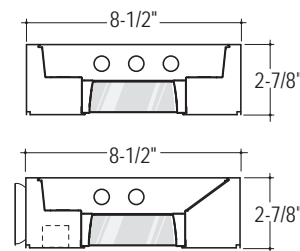
## Joining and Wiring

Ridge luminaires are joined using Pinnacle's key hole alignment system. The locking mechanism simplifies installation by allowing the fixture installer to hang one fixture onto the next making installation nearly a one-man operation. Secure fixtures together by aligning screws into key-holes. Make wire connections using the supplied push nuts. Tighten screws until fixtures are joined together.

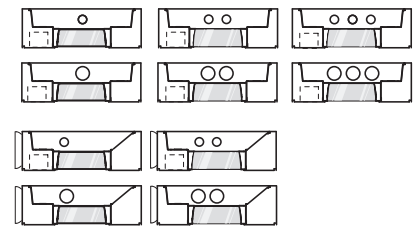


The Ridge by Pinnacle Architectural Lighting is a fully modular suspended and wall linear product line that bridges a full line of lamping and light control capabilities with a narrow profile to provide tremendous high efficiency, low glare performance for the widest range of commercial applications.

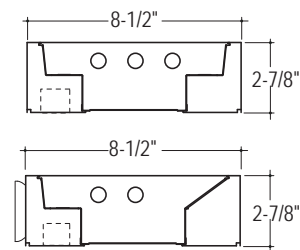
## Ridge<sup>2</sup> Louver (RS9P)



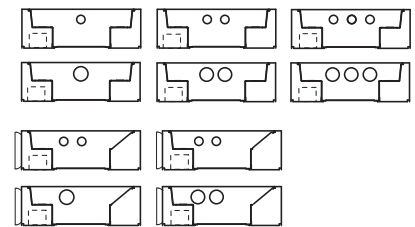
Lamping Options (T5/T5HO, T8)



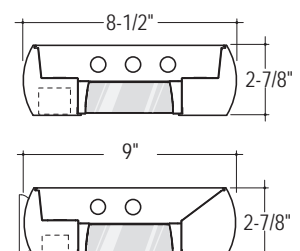
## Ridge<sup>2</sup> Lens (RS9A)



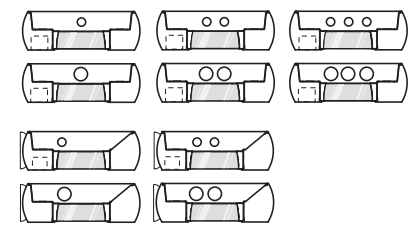
Lamping Options (T5/T5HO, T8)



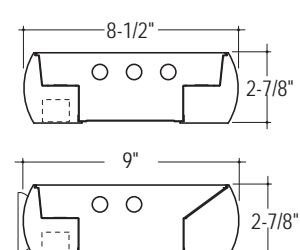
## Ridge Louver (R9P)



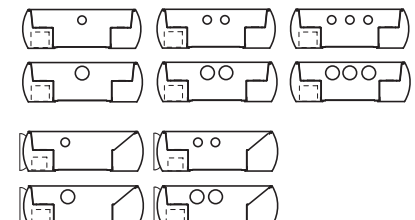
Lamping Options (T5/T5HO, T8)



## Ridge Lens (R9A)



Lamping Options (T5/T5HO, T8)



# Daylight Harvesting

## Integrated Daylight Sensor

Today's building environments require thoughtful choices from planning through final integration. Taking advantage of daylight harvesting potential to save energy and create smarter, more responsible environments is easily achieved through use of the integrated daylight sensor option for Ridge.

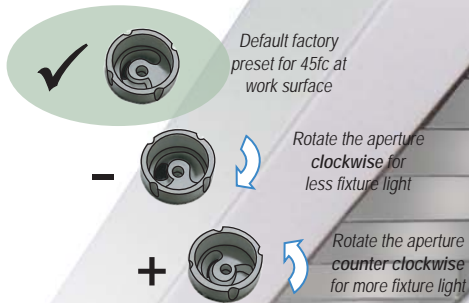
In addition to inherent green benefits, the integrated daylight sensor is a turnkey solution with no extra control wires to the fixture. Easily specified with fixtures and by simply following the recommended best practices in regards to placement of the daylight sensor, you can add daylight harvesting to your project's list of energy saving green potential.

## Technical

- Controls up to 20 dimming ballasts
- +1.5v to +10.5v input control to ballast
- Sensor adjustable from 1/3 to 3x light output

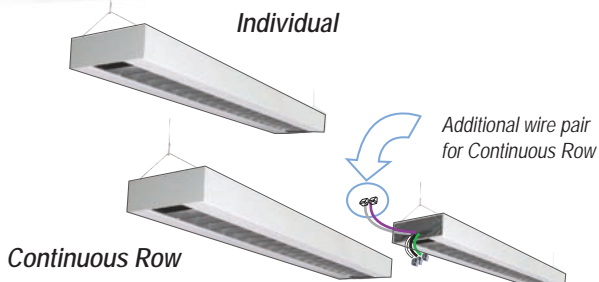
## Sensor Setup

No additional commissioning is required. To adjust light levels in spaces that require more or less fluorescent light, simply rotate the sensor aperture in the fixture.



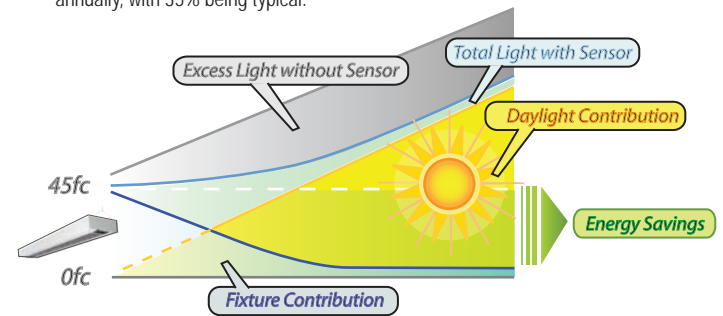
## Ease of Installation

Contractors will appreciate the minimal extra wiring needed for Ridge fixtures with the daylight sensor option. Fixtures will have no additional control wiring feed; continuous run mounting will simply require an additional pair of wires joined between fixtures.



## Energy Savings

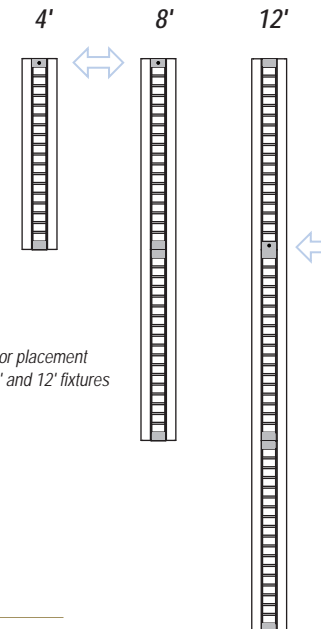
Measuring reflected light from beneath the fixture, the daylight sensor dims output when the light level setpoint is exceeded through daylight contribution. Depending on location and season, savings can be as significant as 15-45% annually, with 35% being typical.



As daylight increases, the Daylight Sensor will compensate for 50% or more of additional contribution as shown above.

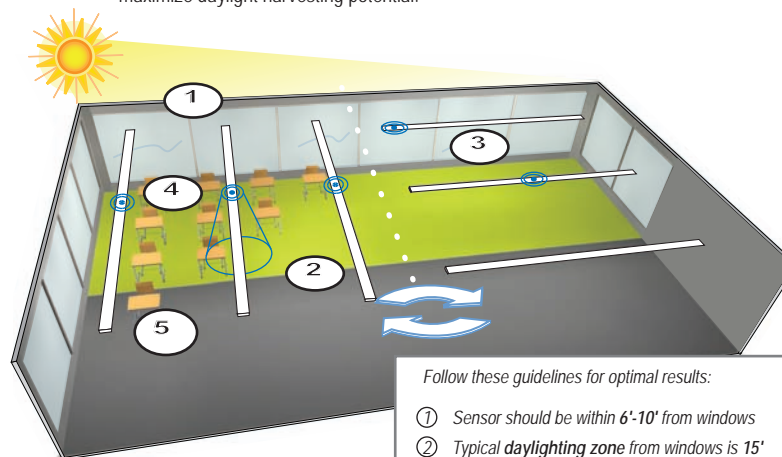
## Sensor Placement

The sensor location placement in Ridge fixtures allows for easy placement of the sensor in relation to the space being daylighted. Housings can also be rotated for even more flexibility.



## Design Placement

While the daylight sensor is flexible and easy to specify, some guidelines for sensor placement within your project or space should be followed to maximize daylight harvesting potential.



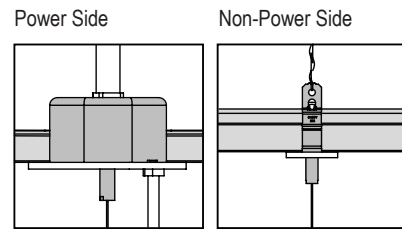
Follow these guidelines for optimal results:

- ① Sensor should be within 6'-10' from windows
- ② Typical daylighting zone from windows is 15'
- ③ Sensors should not be placed within 5' of each other
- ④ Sensor should be placed over typical work area
- ⑤ Recommended mounting height for sensor is 8'-10'

# Mounting

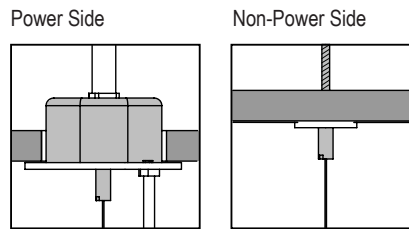
## Aircraft Cable to Grid Ceiling (AC\_G\_)

Utilize with on-grid mounting with acoustical grid ceiling



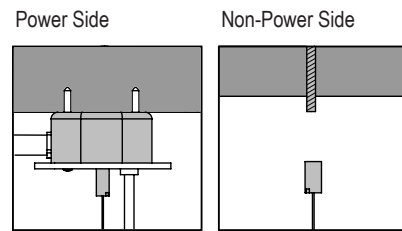
## Aircraft Cable to Junction Box (AC\_JB)

Utilize with sheet rock and off grid acoustical grid ceiling



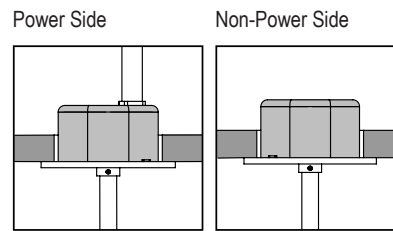
## Aircraft Cable to Structure (AC\_ST)

Utilize for inaccessible hard ceiling



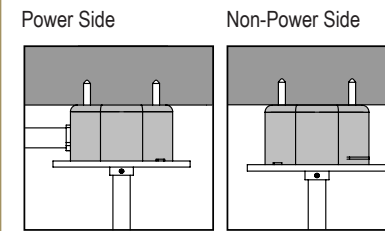
## Pendant Pipe to Junction Box (PP\_JB)

Utilize with sheet rock and off grid acoustical grid ceiling



## Pendant Pipe to Structure (PP\_ST)

Utilize for inaccessible hard ceiling



# Luminaire Specification

R	T	---	-----	---	---	---	-----
PRODUCT	LAMPS	LENGTH	MOUNTING	VOLTAGE	CIRCUITING <sup>3</sup>	FINISH	OPTIONS
RS9A- Ridge <sup>2</sup> with satine lens	1T5- (1) 28W T5	Individual Units	Aircraft Cable	120- 120 V	1C- Single Circuit	W- Matte	DSM- Daylight Sensor Master <sup>5</sup>
	2T5- (2) 28W T5	4- 4'	AC48G1- 1" T-Bar	277- 277 V	2C- Dual Circuit <sup>3</sup>	White	DSS- Daylight Sensor Satellite <sup>5</sup>
	3T5- (3) 28W T5	8- 8'	AC48G9- 9/16" T-Bar	347- 347 V <sup>3</sup>	1D- Single Circuit Dimming <sup>3</sup>	CC-Custom Color	MS- Motion Sensor
RS9P- Ridge <sup>2</sup> with semi-specular parabolic louver	1T5HO-(1) 54W T5HO	12- 12' <sup>1</sup>	AC48GS- Slotted T-Bar	UNV- UNV <sup>3</sup> (120/277)	2D- Dual Circuit Dimming <sup>3</sup>		DL100-100% Direct <sup>4</sup>
	2T5HO-(2) 54W T5HO	Continuous Runs	AC48JB- Junction Box		1E- Single Circuit with Emergency Circuit <sup>3</sup>		DL90- 90% Direct/10% Indirect <sup>4</sup>
	3T5HO-(3) 54W T5HO		AC48ST- Structure		2E- Dual Circuit with Emergency Circuit <sup>3</sup>		DL80- 80% Direct/20% Indirect <sup>4</sup>
R9A- Ridge with satine lens	1T8- (1) 32W T8	xx'- Specify nominal overall row length in 4' increments	AC548G_- 5" Non-Power Canopy <sup>2</sup>		1B- Single Circuit with Battery Pack <sup>3</sup>		DL60- 60% Direct/40% Indirect <sup>4</sup>
	2T8- (2) 32W T8		AC548JB- 5" Non-Power Canopy <sup>2</sup>		2B- Dual Circuit with Battery Pack <sup>3</sup>		QS- Quick Ship <sup>6</sup>
	3T8- (3) 32W T8		SQ48G_- 5" Square Canopy <sup>2</sup>				LB1- 2 Lamps Up/1 Down <sup>4</sup>
R9P- Ridge with semi-specular parabolic louver			SQ48JB- 5" Square Canopy <sup>2</sup>				LB2- 2 Lamps Down <sup>4</sup>
			Pendant				DG- Dust Guard
			PP__JB- Junction Box <sup>7</sup>				SR- Specular Reflector <sup>4</sup>
			PP__ST- Structure <sup>7</sup>				LO- Lens Overlay <sup>4</sup>
			Wall Mount				CL- 90 Degree Corner
			WA- Wall Mount				CX- X Connector (Aircraft Cable)
							CT- T Connector (Aircraft Cable)

<sup>1</sup>12 ft is not available on wall mounted fixtures.

<sup>2</sup>Replaces standard 2" non-power canopy. Square canopy replaces standard round. Must specify grid ceiling type on AC548G\_ and SQ48G\_. Select from G1 (1" grid), G9 (9/16" grid), or GS (slotted); for example AC548G1.

<sup>3</sup>Some Ridge configurations will not accommodate all electrical options. Consult factory.

<sup>4</sup>Some Ridge options are not available for all housing styles. See specification sheet.

<sup>5</sup>Sensor included on all DSM fixtures. Sensor not included on DSS fixtures. See specification sheet for ordering details.

<sup>6</sup>10 day lead time applies to suspended items only, universal voltage, standard white, single (1C) and dual (2C) circuit.

<sup>7</sup>Specify overall length of pendant, 12", 18" or 24". Consult factory for additional lengths.

**Quick  
Ship Product**

12655 East 42nd Avenue Suite 50  
Denver CO, 80239  
Phone: 303.322.5570  
Fax: 303.322.5568  
www.pinnacle-ltg.com  
May 2010

**PINNACLE**  
ARCHITECTURAL LIGHTING™