



T5, T5HO, T8 / Direct and Indirect Luminaire / Acrylic Lens

For Indoor Lighting Applications

CONSTRUCTION Extruded aluminum housing in a 5-3/4" by 2-7/8" profile. Standard 4'-0", 8'-0" and 12'-0" fixtures can be joined to create continuous runs.

REFLECTOR Standard high reflectance die-formed white painted aluminum. Optional specular reflector available.

ENDPLATES Precision fabricated steel endplates are fastened with concealed hardware.

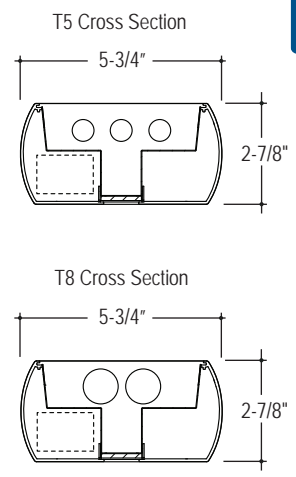
LENS Satine Lens is .125" diffuse acrylic lens with matte finish.

ELECTRICAL T5, T5HO: Program start 120/277 volt integral electronic ballast with less than 10% THD. T8: Instant start 120/277 volt electronic ballast with less than 10% THD. Through wiring with quick connects standard. Standard single circuit. Each ballast provided with disconnects to meet luminaire disconnect code requirement.

MOUNTING Adjustable aircraft cable mounts on 4'-0", 8'-0" and 12'-0" centers. Refer to installation instructions for appropriate ceiling details. Canopies are painted white unless otherwise specified.

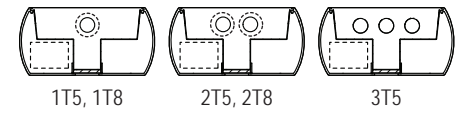
FINISH Standard powder-coat white painted finish. Consult factory for custom color and finish options.

LABELS UL and cUL Listed and approved for dry/damp location.



STANDARD LIGHT DISTRIBUTION
Direct 15%; Indirect 85%

Lamp Options



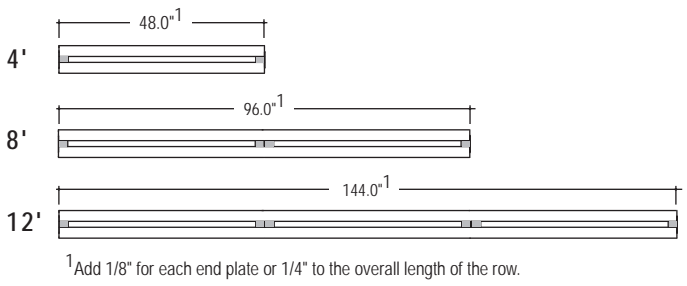
LUMINAIRE SPECIFICATION

Sample Catalog #: R5A-1T5-32'-AC48G1-120-1C-W

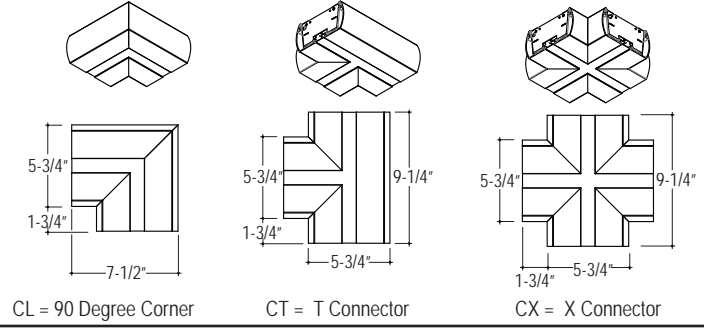
| PRODUCT | LAMPS | LENGTH | MOUNTING | VOLTAGE | CIRCUIT/WIRING | FINISH | OPTIONS |
|--|---|--|---|--|---|--|--|
| R5A- | | | | | | | |
| R5A- Ridge 5" Direct/ Indirect indoor luminaire with satine lens | 1T5- (1) 28W T5 2T5- (2) 28W T5 3T5- (3) 28W T5 1T5HO-(1) 54W T5HO 2T5HO-(2) 54W T5HO 3T5HO-(3) 54W T5HO 1T8- (1) 32W T8 2T8 (2) 32W T8 | Individual Units 4- 4' 8- 8' 12- 12' Continuous Runs xx'- Specify nominal overall row length in 4' increments | Adjustable Aircraft Cable ¹ AC48G1- 1" T-Bar AC48G9- 9/16" T-Bar AC48GS- Slotted T-Bar AC48JB- Junction Box AC48ST- Structure AC5__G_-5" Non-Power Canopy ² AC5__JB-5" Non-Power Canopy ² SQ5__G_-Square Canopy ² SQ5__JB-Square Canopy ² | 120 - 120V 277 - 277V 347 - 347V ³ UNV - UNV ⁴ (120/277) | 1C-Single Circuit 2C-Dual Circuit ^{5,6} 1D-Single Circuit Dimming ⁶ 2D-Dual Circuit Dim- ming ^{5,6} 1E-Single Circuit with Emergency Circuit ⁶ 2E-Dual Circuit with Emergency Circuit ^{5,6} 1B-Single Circuit with Battery Pack ⁶ 2B-Dual Circuit with Battery Pack ^{5,6} | W- Matte White CC- Custom Color | QS- Quick Ship ⁹ DSM- Daylight Sensor Master (sensor included) ⁷ DSS- Daylight Sensor Satellite (sensor not included) ⁷ MS- Motion Sensor SR- Specular Reflector DG- Dust Guard ⁸ CL- 90 Degree Corner CX- X Connector CT- T Connector |

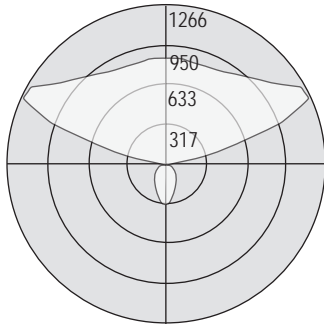
¹Consult factory for additional lengths.
²Replaces standard 2" non-power canopy. Square canopy replaces standard round.
³Consult factory for 347 volt ballast.
⁴Not available for use with a battery pack.
⁵Dual circuit available for 2 (side-by-side), 3 lamps switched inboard/outboard.
⁶Some Ridge configurations are not available for all circuiting options. Consult factory.
⁷See back page for ordering information. Requires 0-10 volt dimming.
⁸Covers top of luminaire.
⁹Includes Universal voltage, standard white, single (1C) and dual circuit (2C).

Individual Luminaires

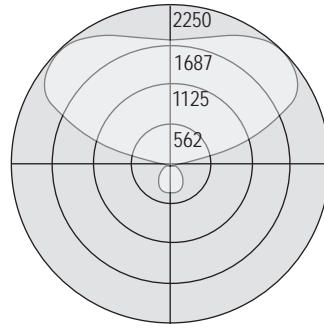


Corner Options

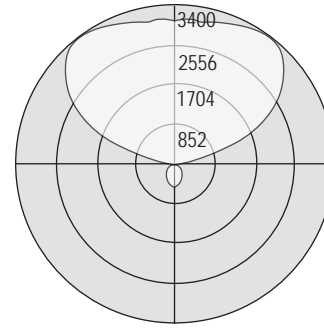




Test #: 203712
 Part #: R5A-1T5HO-4-SR
 Total Luminaire Efficiency: 92.0%
 Direct: 15%; Indirect: 85%



Test #: 203718
 Part #: R5A-2T5HO-4-SR
 Total Luminaire Efficiency: 90.0%
 Direct: 12%; Indirect: 88%



Test #: 203723
 Part #: R5A-3T5HO-4-SR
 Total Luminaire Efficiency: 87.0%
 Direct: 10%; Indirect: 90%

FEATURES AND OPTIONS

• DAYLIGHT SENSOR

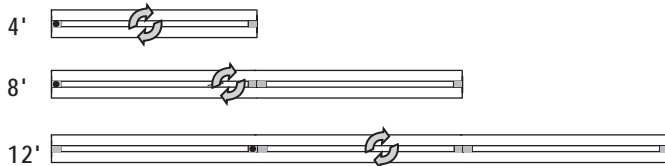


APPLICATION: Daylight sensors are an ideal solution for saving energy, creating smart environments and aiding sustainability. Pinnacle Lighting's daylight sensor is a turn key solution for lighting control. The sensor is easily wired to the 0-10 volt dimming ballast installed in the fixture.

DAYLIGHT SENSOR: Daylight sensor dims lights based on electric light and presence of daylight. Sensor can control up to 20 dimming ballasts. Sensor is factory calibrated to 45 footcandles (fc), adjustable by 1/3 to 3 times the default setting by rotating the aperture.

STANDARD SENSOR PLACEMENT: The sensor location in Ridge 5" fixtures allows for easy placement of the sensor in relation to the space being daylighted. Housings can be rotated for more flexibility.

• Indicates sensor location



ORDERING INFORMATION: Specify row layout in the Options section of the part number when ordering Integral Daylight Sensor. Daylight Sensor Master (DSM) includes the fixture with sensor and dimming ballast. Controls DSS units. Daylight Sensor Satellite (DSS) includes the fixture with a sensor compatible dimming ballast only. Must be used in conjunction with a DSM unit. See example 4 and 5 for information on ordering rows with both standard circuiting and daylight sensor.

Example 1
 4' • Indicates sensor location
 4' individual fixture with a Daylight Sensor. Specify: R5A-2T5-4'-AC48G1-120-1C-W-4DSM

Example 2
 8'
 8' individual fixture wired to a DSM fixture. Specify: R5A-2T5-8'-AC48G1-120-1C-W-8DSS

Example 3
 16'
 8' fixture with a Daylight Sensor and 8' fixture wired to DSM fixture
 Specify: R5A-2T5-16'-AC48G1-120-1C-W-8DSM+8DSS

Example 4
 16'
 8' fixture with a Daylight Sensor + 8' fixture wired as standard dual circuit (not wired to the sensor)
 Specify: R5A-2T5-16'-AC48G1-120-2C-W-8DSM+82C

Example 5
 20'
 12' fixture with a Daylight Sensor + 8' fixture wired as standard single circuit (not wired to the sensor)
 Specify: R5A-2T5-20'-AC48G1-120-1C-W-12DSM+81C

• STANDARD ROW CONFIGURATION

Pinnacle Architectural Lighting utilizes standard row configurations for continuous runs. Please consult factory if a project requires non-standard row configurations.

| Individual Length | Row Length | | | | | | | | | | | | | | | | | | | |
|-------------------|------------|---|----|----|----|----|----|----|----|----|----|----|----|----|----|----|----|----|----|----|
| | 4 | 8 | 12 | 16 | 20 | 24 | 28 | 32 | 36 | 40 | 44 | 48 | 52 | 56 | 60 | 64 | 68 | 72 | 76 | 80 |
| 4' | 1 | | | | | | | | | | | | | | | | | | | |
| 8' | | 1 | | 2 | 1 | | 2 | 1 | | 2 | 1 | | 2 | 1 | | 2 | 1 | | 2 | 1 |
| 12' | | | 1 | | 1 | 2 | 1 | 2 | 3 | 2 | 3 | 4 | 3 | 4 | 5 | 4 | 5 | 6 | 5 | 6 |