

For Indoor Lighting Applications

CONSTRUCTION Extruded aluminum housing, die-cast gasketed end caps. Luminaire head attaches to cold rolled steel recessed box in one of four field adjustable positions.

REFLECTOR Highly reflective specular anodized aluminum.

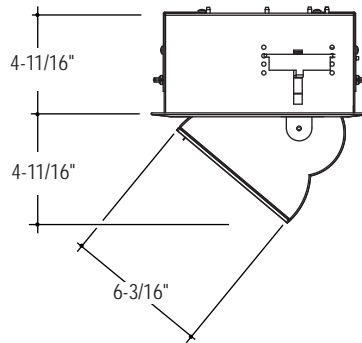
LENS Micro-prismatic tempered glass and die-formed aluminum trim (spring secured) for tool-less lamp access.

ELECTRICAL Standard 100-150 watt: Low frequency electronic HID Universal Voltage (120/277) ballast. Standard 200-350 watt: EISA compliant Pulse Start Core and Coil magnetic ballast. Remote Ballast supplied with long range ignitor mounted in enclosure box-not to be located over 50' from lamp. Consult factory for availability of electronic ballasts with integral ballast applications.

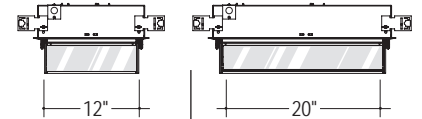
MOUNTING Fully rotatable head mounts to structure at ceiling.

FINISH Standard powder-coat white textured painted finish. Consult factory for custom color and finishes.

LABELS UL and cUL Listed and approved for dry/damp location.



E



Remote Ballast
(1) 100 ED17
(1) 150 ED17

Remote Ballast Integral Ballast
(1) 200 T15 (1) 100 ED17
(1) 250 T15 (1) 150 ED17
(1) 320 T15
(1) 350 T15

LUMINAIRE SPECIFICATION

Sample Catalog #: PLS-M100PS-SI-120-1C-W-V

PRODUCT	LAMPS / LENGTH	MOUNTING	VOLTAGE	CIRCUITING	FINISH	OPTIONS																
PLS- Peak Large indoor luminaire, Smooth Housing, dry/damp label	<p>REMOTE BALLAST</p> <table border="1"> <thead> <tr> <th>LAMP</th> <th>LENGTH</th> </tr> </thead> <tbody> <tr> <td>M100PS- (1) 100W ED17 PS</td> <td>12"</td> </tr> <tr> <td>M150PS- (1) 150W ED17 PS</td> <td>12"</td> </tr> </tbody> </table> <p>INTEGRAL BALLAST</p> <table border="1"> <thead> <tr> <th>LAMP</th> <th>LENGTH</th> </tr> </thead> <tbody> <tr> <td>M200PS- (1) 200W T15 PS</td> <td>20"</td> </tr> <tr> <td>M250PS- (1) 250W T15 PS</td> <td>20"</td> </tr> <tr> <td>M320PS- (1) 320W T15 PS</td> <td>20"</td> </tr> <tr> <td>M350PS- (1) 350W T15 PS</td> <td>20"</td> </tr> </tbody> </table>	LAMP	LENGTH	M100PS- (1) 100W ED17 PS	12"	M150PS- (1) 150W ED17 PS	12"	LAMP	LENGTH	M200PS- (1) 200W T15 PS	20"	M250PS- (1) 250W T15 PS	20"	M320PS- (1) 320W T15 PS	20"	M350PS- (1) 350W T15 PS	20"	<p>REMOTE BALLAST¹</p> <p>SR- Ceiling Semi-Recessed, Remote Ballast</p> <p>INTEGRAL BALLAST</p> <p>SI- Ceiling Semi-Recessed, Integral Ballast, Electronic</p>	<p>120- 120 V</p> <p>277- 277 V</p> <p>UNV- UNV² (120/277)</p>	<p>1C- Single Circuit³</p>	<p>W- Matte White</p>	<p>B- Baffle⁴</p> <p>V- Visor⁴</p>
LAMP	LENGTH																					
M100PS- (1) 100W ED17 PS	12"																					
M150PS- (1) 150W ED17 PS	12"																					
LAMP	LENGTH																					
M200PS- (1) 200W T15 PS	20"																					
M250PS- (1) 250W T15 PS	20"																					
M320PS- (1) 320W T15 PS	20"																					
M350PS- (1) 350W T15 PS	20"																					

¹Consult factory for remote distances greater than 50' with 200W, 250W, 320W and 350W lamps.

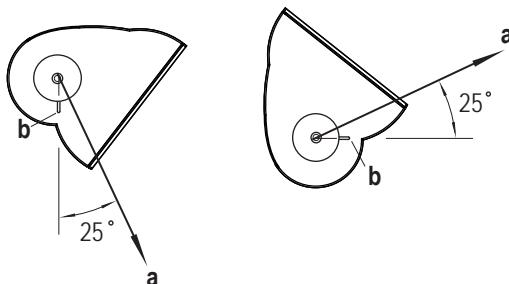
²Not available on 200W - 350W lamps.

³Some Peak Large configurations will not accommodate all electrical options. Consult factory.

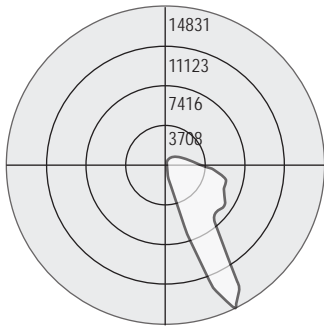
⁴Color will match housing unless otherwise specified.

AIMING

Fixture achieves optimal beam angle (a) when "aiming notch" (b) aligns with horizontal or vertical axis. Luminaire head rotates and locks for easy field adjustability.



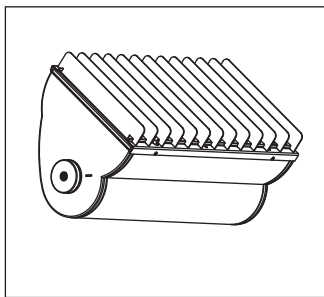
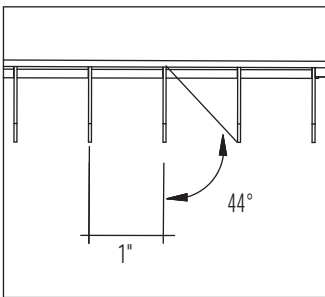
Test # 202927
 Catalog # PL-M320PS_C
 Total Luminaire Efficiency = 60.30%



Zone	Lumens	%Lamp	%Fixt
0-30	2576.9	8.6	14.2
0-40	5372.5	17.9	29.7
0-60	10593.7	35.3	58.6
0-90	16046.0	53.5	88.7
90-120	1648.7	5.5	9.1
90-130	1854.6	6.2	10.3
90-150	2021.8	6.7	11.2
90-180	2041.6	6.8	11.3
0-180	18087.5	60.3	100

FEATURES AND OPTIONS

• EXTERNAL BAFFLE

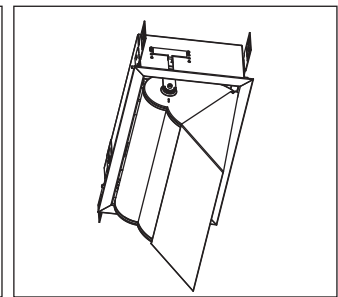
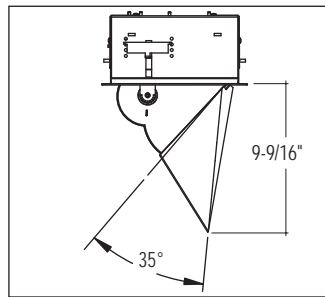


Application: External Baffle controls glare and reduces light output by 15%. Recommended when lengthwise shielding of lamp is required.

Construction: Straight baffles are high reflective white painted aluminum blades. Blade height is 1-1/8" and spaced 1" on center. Baffles are factory installed and can be easily removed for lamp replacement.

Ordering Information: Indicate "B" in the Options section of the part number. (Sample Catalog #: PLS-M100PS-SI-120-1C-W-B).

• VISOR



Application: Provides 35 degrees of shielding with no interference to peak beam angle. Recommended when glare from the lens or reflector must be shielded.

Construction: Solid formed visor mounts to fixture with 2 screws. Visors are field installed. Visors are painted to match fixture housing unless otherwise specified.

Ordering Information: Indicate a "V" in the Options section of the part number. (Sample Catalog #: PLS-M100PS-SI-120-1C-W-V)

• MOUNTING DETAIL

Heavy gauge metal tabs allow mounting to any ceiling type. Toolless adjustment of tabs allows for easy field adjustment of luminaire for a clean fit to sheet rock and layin ceilings

Metal tabs easily bend to enabling luminaire to adapt to bar hangers from either direction

After luminaire is installed, aluminum frame easily mounts to luminaire cleanly with torsion springs.

