

For Indoor and Outdoor Lighting Applications

**CONSTRUCTION** Extruded aluminum housing, die-cast gasketed end caps. Outdoor rated luminaires include mechanically attached and gasketed aluminum door frame.

**REFLECTOR** Highly reflective specular anodized aluminum.

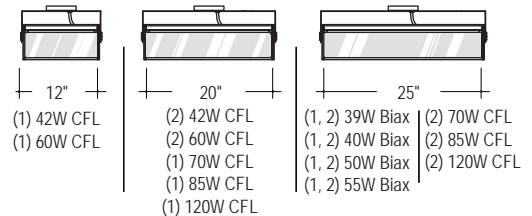
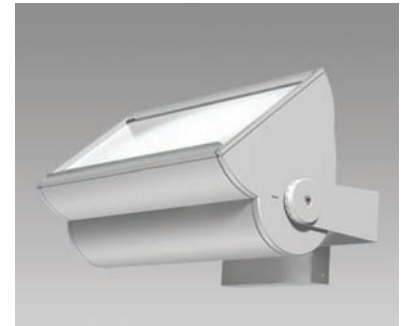
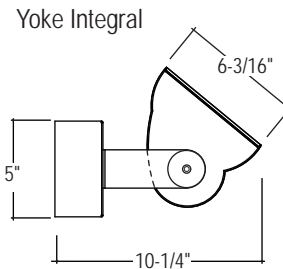
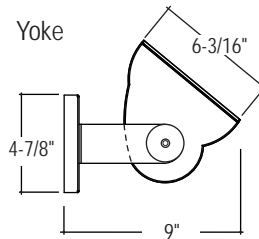
**LENS** Micro-prismatic tempered glass and die-formed aluminum trim (spring secured) for tool-less lamp access. For outdoor luminaires, glass is secured to aluminum door frame and mechanically attaches to housing.

**ELECTRICAL** Standard 120/277 volt integral electronic ballast with a power factor greater than 90% and less than 15% THD. Consult factory for battery packs and dimming. Each ballast provided with disconnects to meet luminaire disconnect code requirement.

**MOUNTING** Fully rotatable head mounts to structure either at ceiling or wall.

**FINISH** Standard powder-coat white textured painted finish. Consult factory for custom color and finishes.

**LABELS** UL and cUL Listed and approved for dry/damp location or wet location. Specify label required under "Product" section of catalog number.



**LUMINAIRE SPECIFICATION**

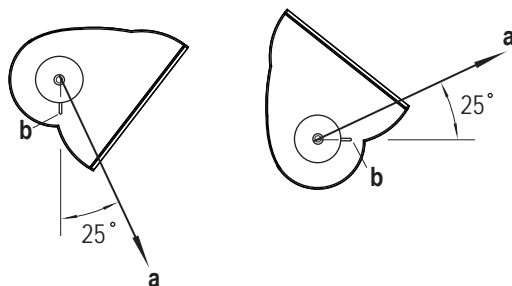
Sample Catalog #: PLS-BX39-YI-120-1C-W-V

PRODUCT	LAMPS / LENGTH	MOUNTING	VOLTAGE	CIRCUITING	FINISH	OPTIONS	
PLS- Peak Large indoor luminaire, <b>Smooth</b> Housing, dry/damp label	LAMP CF42- (1) 42W CFL CF60- (1) 60W CFL	LENGTH 12"	COMPACT FLUORESCENT REMOTE BALLAST <sup>1</sup> Y- Yoke	120- 120 V 277- 277 V 347- 347 V <sup>3</sup> UNV- UNV (120/277)	1C- Single Circuit 2C- Dual Circuit <sup>4</sup> 1D- Single Circuit with Dimming <sup>4</sup> 2D- Dual Circuit with Dimming <sup>4</sup>	W- Matte White S- Metallic Silver BR- Bronze Color CC- Custom Color	B- Baffle <sup>5</sup> V- Visor <sup>5</sup>
PLR- Peak Large indoor luminaire, <b>Ribbed</b> Housing, dry/damp label	2CF42- (2) 42W CFL 2CF60- (2) 60W CFL CF70- (1) 70W CFL CF85- (1) 85W CFL CF120- (1) 120 W CFL	20"	INTEGRAL BALLAST BOX YI- Yoke Integral (electronic only) Wet Label not available		1B- Single Circuit with Battery Pack <sup>4</sup> 2B- Dual Circuit with Battery Pack <sup>4</sup>		
PLSW- Peak Large outdoor luminaire, <b>Smooth</b> Housing, wet label	2CF70- (2) 70W CFL 2CF85- (2) 85W CFL 2CF120- (2) 120W CFL BX39- (1) 39W Biax 2BX39- (2) 39W Biax BX40- (1) 40W Biax 2BX40- (2) 40W Biax BX50- (1) 50W Biax	25"	BIAX INTEGRAL BALLAST (in fixture head) <sup>2</sup> Y- Yoke				
PLRW- Peak Large outdoor luminaire, <b>Ribbed</b> Housing, wet label	2CF70- (2) 70W CFL 2CF85- (2) 85W CFL 2CF120- (2) 120W CFL BX39- (1) 39W Biax 2BX39- (2) 39W Biax BX40- (1) 40W Biax 2BX40- (2) 40W Biax BX50- (1) 50W Biax	25"					
PLSN- Peak Large natatorium luminaire, <b>Smooth</b> Housing, wet label	2BX50- (2) 50W Biax BX55- (1) 55W Biax 2BX55- (2) 55W Biax	25"					
PLRN- Peak Large natatorium luminaire, <b>Ribbed</b> Housing, wet label							

<sup>1</sup>Remote wiring for CFL allowed to a maximum of 6' for 2-lamp or 15' for 1-lamp between ballast and lamp holder.  
<sup>2</sup>Utilize Integral Ballast Box (YI mount) when utilizing a battery pack with a biax lamp.  
<sup>3</sup>Not available with compact fluorescent. Consult factory for biax lamp. Not all lamping options are available.  
<sup>4</sup>Some Peak Large configurations will not accommodate all electrical options. Consult factory.  
<sup>5</sup>Color will match housing unless otherwise specified.

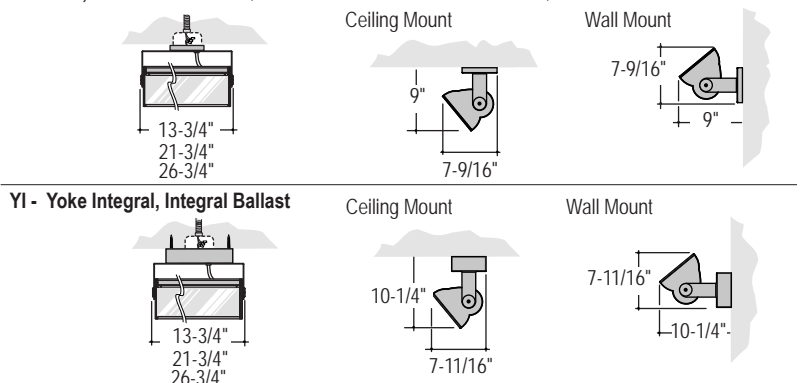
**AIMING**

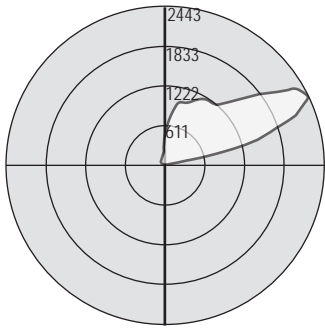
Fixture achieves optimal beam angle (a) when "aiming notch" (b) aligns with horizontal or vertical axis. Luminaire head rotates and locks for easy field adjustability.



**MOUNTING DIMENSION**

Y - Yoke, Remote Ballast (Biax ballast installed into fixture head.)





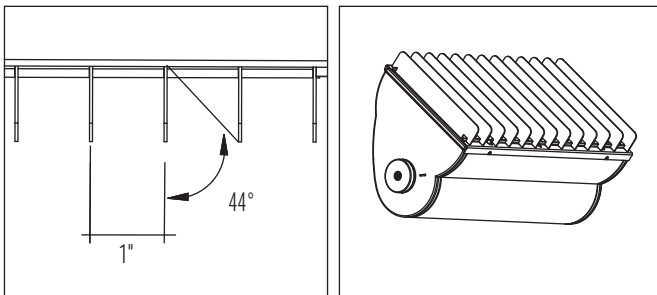
Test # JTL-200046  
 Catalog # PL-BX55  
 Total Luminaire Efficiency = 66.20%

Zone	Lumens	%Lamp	%Fixt
0-30	0	0	0
0-40	0	0	0
0-60	0	0	0
0-90	34.0	.7	1.1
90-120	1390.9	29	43.8
90-130	1953.5	40.7	61.5
90-150	2719.7	56.7	85.6
90-180	3141.6	65.5	98.9
0-180	3175.6	66.2	100

0	0	45	90	135	180
0	0	0	0	0	0
5	0	0	0	0	0
15	0	0	0	0	0
25	0	0	0	0	0
35	0	0	0	0	0
45	0	0	0	0	0
55	0	0	0	0	0
65	0	0	0	0	0
75	0	.35	0	0	0
85	126	84	.17	0	0
95	105	180	36	.07	.04
105	1504	1292	131	11	2.5
115	2443	1480	221	37	23
125	1920	1090	270	61	44
135	1307	1070	359	76	67
145	1211	1068	364	94	77
155	1084	985	410	98	89
165	1007	896	424	108	93
170	886	762	397	108	96

FEATURES AND OPTIONS

• EXTERNAL BAFFLE

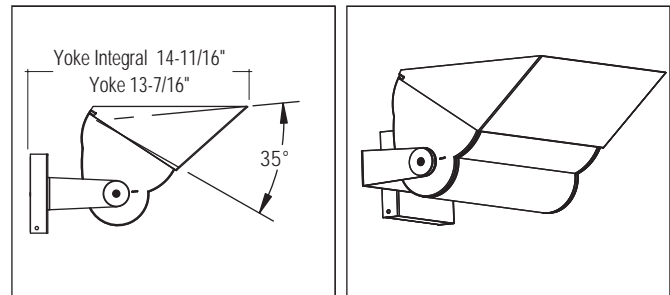


**Application:** External Baffle controls glare and reduces light output by 15%. Recommended when lengthwise shielding of lamp is required.

**Construction:** Straight baffles are high reflective white painted aluminum blades. Blade height is 1-1/8" and spaced 1" on center. Baffles are factory installed and can be easily removed for lamp replacement.

**Ordering Information:** Indicate "B" in the Options section of the part number. (Sample Catalog #: PLS-CF60-Y-120-1C-W-B).

• VISOR

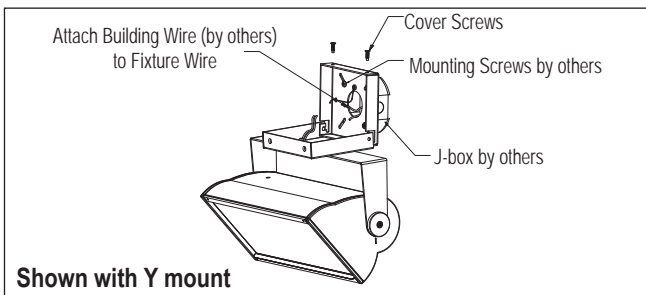


**Application:** Provides 35 degrees of shielding with no interference to peak beam angle. Recommended when glare from the lens or reflector must be shielded.

**Construction:** Solid formed visor mounts to fixture with 2 screws. Visors are field installed. Visors are painted to match fixture housing unless otherwise specified.

**Ordering Information:** Indicate a "V" in the Options section of the part number. (Sample Catalog #: PLS-CF60-Y-120-1C-W-V)

• MOUNTING DETAIL



**Assembly:** Fixture remains captive to the mounting plate allowing for hands free wire connection. Once wired, swing fixture back into place and secure with the hardware provided. See installation instructions when installing fixtures. Specificationsheets are not to be used as installation instructions.