

For Indoor Lighting Applications

CONSTRUCTION Extruded aluminum housing, die-cast gasketed end caps. Luminaire head mechanically attaches to cold rolled steel recessed box in one of four field adjustable positions.

REFLECTOR Highly reflective specular anodized aluminum.

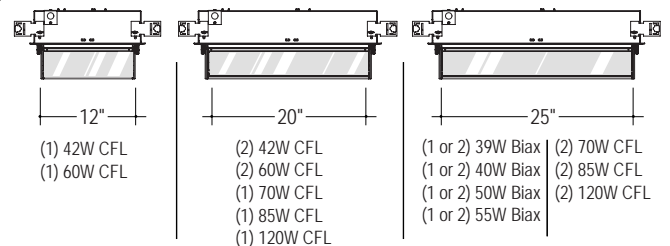
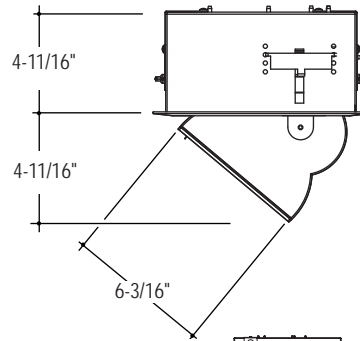
LENS Micro-prismatic tempered glass and die-formed aluminum trim (spring secured) for tool-less lamp access.

ELECTRICAL Standard 120/277 volt integral electronic ballast with a power factor greater than 90% and less than 15% THD. Consult factory for battery packs and dimming. Each ballast provided with disconnects to meet luminaire disconnect code requirement.

MOUNTING Fully rotatable head mounts to structure at ceiling.

FINISH Standard powder-coat white textured painted finish. Consult factory for custom color and finishes.

LABELS UL and cUL Listed and approved for dry/damp location.



LUMINAIRE SPECIFICATION

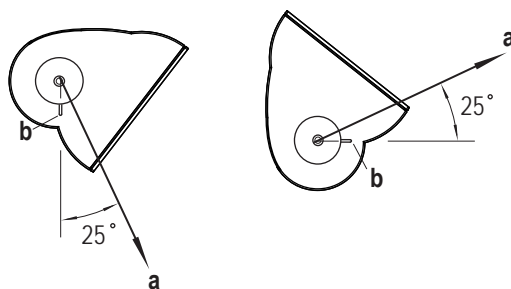
Sample Catalog #: PLS-CF60-SI-120-1C-W-V

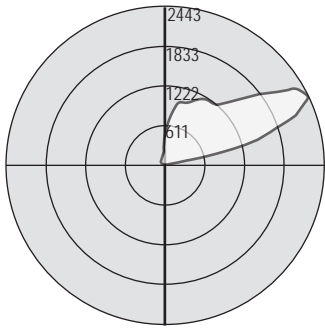
PL_-	_____	SI-	___-	__-	W-	__																																						
PRODUCT	LAMPS / LENGTH	MOUNTING	VOLTAGE	CIRCUITING	FINISH	OPTIONS																																						
PLS- Peak Large indoor luminaire, Smooth Housing, dry/damp label	<table border="1"> <tr> <th>LAMP</th> <th>LENGTH</th> </tr> <tr> <td>CF42- (1) 42W CFL</td> <td>12"</td> </tr> <tr> <td>CF60- (1) 60W CFL</td> <td>12"</td> </tr> <tr> <td>2CF42- (2) 42W CFL</td> <td>20"</td> </tr> <tr> <td>2CF60- (2) 60W CFL</td> <td>20"</td> </tr> <tr> <td>CF70- (1) 70W CFL</td> <td>20"</td> </tr> <tr> <td>CF85- (1) 85W CFL</td> <td>20"</td> </tr> <tr> <td>CF120- (1) 120 W CFL</td> <td>20"</td> </tr> <tr> <td>2CF70- (2) 70W CFL</td> <td>25"</td> </tr> <tr> <td>2CF85- (2) 85W CFL</td> <td>25"</td> </tr> <tr> <td>2CF120- (2) 120W CFL</td> <td>25"</td> </tr> <tr> <td>BX39- (1) 39W Biax</td> <td>25"</td> </tr> <tr> <td>2BX39- (2) 39W Biax</td> <td>25"</td> </tr> <tr> <td>BX40- (1) 40W Biax</td> <td>25"</td> </tr> <tr> <td>2BX40- (2) 40W Biax</td> <td>25"</td> </tr> <tr> <td>BX50- (1) 50W Biax</td> <td>25"</td> </tr> <tr> <td>2BX50- (2) 50W Biax</td> <td>25"</td> </tr> <tr> <td>BX55- (1) 55W Biax</td> <td>25"</td> </tr> <tr> <td>2BX55- (2) 55W Biax</td> <td>25"</td> </tr> </table>	LAMP	LENGTH	CF42- (1) 42W CFL	12"	CF60- (1) 60W CFL	12"	2CF42- (2) 42W CFL	20"	2CF60- (2) 60W CFL	20"	CF70- (1) 70W CFL	20"	CF85- (1) 85W CFL	20"	CF120- (1) 120 W CFL	20"	2CF70- (2) 70W CFL	25"	2CF85- (2) 85W CFL	25"	2CF120- (2) 120W CFL	25"	BX39- (1) 39W Biax	25"	2BX39- (2) 39W Biax	25"	BX40- (1) 40W Biax	25"	2BX40- (2) 40W Biax	25"	BX50- (1) 50W Biax	25"	2BX50- (2) 50W Biax	25"	BX55- (1) 55W Biax	25"	2BX55- (2) 55W Biax	25"	INTEGRAL BALLAST ^{1,2} SI- Ceiling Semi-Recessed, Integral Ballast, Electronic	120- 120 V 277- 277 V 347- 347 V ³ UNV- UNV (120/277)	1C- Single Circuit 2C- Dual Circuit ⁴ 1D- Single Circuit with Dimming ⁴ 2D- Dual Circuit with Dimming ⁴ 1B- Single Circuit with Battery Pack ⁴ 2B- Dual Circuit with Battery Pack ⁴	W- Matte White	B- Baffle ⁴ V- Visor ⁴
LAMP	LENGTH																																											
CF42- (1) 42W CFL	12"																																											
CF60- (1) 60W CFL	12"																																											
2CF42- (2) 42W CFL	20"																																											
2CF60- (2) 60W CFL	20"																																											
CF70- (1) 70W CFL	20"																																											
CF85- (1) 85W CFL	20"																																											
CF120- (1) 120 W CFL	20"																																											
2CF70- (2) 70W CFL	25"																																											
2CF85- (2) 85W CFL	25"																																											
2CF120- (2) 120W CFL	25"																																											
BX39- (1) 39W Biax	25"																																											
2BX39- (2) 39W Biax	25"																																											
BX40- (1) 40W Biax	25"																																											
2BX40- (2) 40W Biax	25"																																											
BX50- (1) 50W Biax	25"																																											
2BX50- (2) 50W Biax	25"																																											
BX55- (1) 55W Biax	25"																																											
2BX55- (2) 55W Biax	25"																																											

¹ Biax 39W is available for inaccessible or acoustical grid ceilings.
² Biax 40W, 50W and 55W are available for inaccessible ceilings only.
³ Not available with compact fluorescent. Consult factory for biax lamp. Not all lamping options are available.
⁴ Some Peak Large configurations will not accommodate all electrical options. Consult factory.
⁵ Color will match housing unless otherwise specified.

AIMING

Fixture achieves optimal beam angle (a) when "aiming notch" (b) aligns with horizontal or vertical axis. Luminaire head rotates and locks for easy field adjustability.





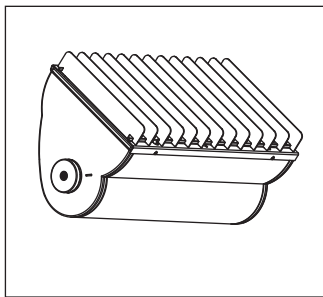
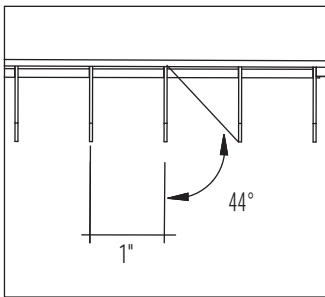
Test # JTL-200046
 Catalog # PL-BX55
 Total Luminaire Efficiency = 66.20%

Zone	Lumens	%Lamp	%Fixt
0-30	0	0	0
0-40	0	0	0
0-60	0	0	0
0-90	34.0	.7	1.1
90-120	1390.9	29	43.8
90-130	1953.5	40.7	61.5
90-150	2719.7	56.7	85.6
90-180	3141.6	65.5	98.9
0-180	3175.6	66.2	100

0	0	45	90	135	180
5	0	0	0	0	0
15	0	0	0	0	0
25	0	0	0	0	0
35	0	0	0	0	0
45	0	0	0	0	0
55	0	0	0	0	0
65	0	0	0	0	0
75	0	.35	0	0	0
85	126	84	.17	0	0
95	105	180	36	.07	.04
105	1504	1292	131	11	2.5
115	2443	1480	221	37	23
125	1920	1090	270	61	44
135	1307	1070	359	76	67
145	1211	1068	364	94	77
155	1084	985	410	98	89
165	1007	896	424	108	93
170	886	762	397	108	96

FEATURES AND OPTIONS

• EXTERNAL BAFFLE

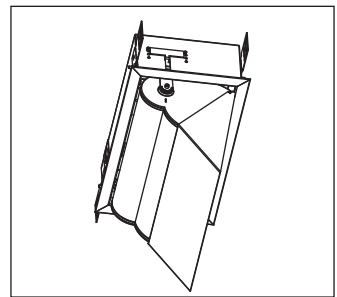
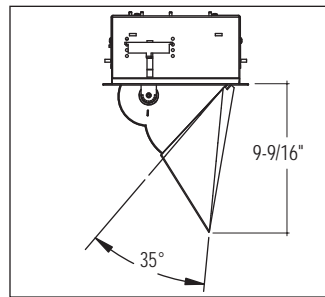


Application: External Baffle controls glare and reduces light output by 15%. Recommended when lengthwise shielding of lamp is required.

Construction: Straight baffles are high reflective white painted aluminum blades. Blade height is 1-1/8" and spaced 1" on center. Baffles are factory installed and can be easily removed for lamp replacement.

Ordering Information: Indicate "B" in the Options section of the part number. (Sample Catalog #: PLS-CF60-SI-120-1C-W-B).

• VISOR



Application: Provides 35 degrees of shielding with no interference to peak beam angle. Recommended when glare from the lens or reflector must be shielded.

Construction: Solid formed visor mounts to fixture with 2 screws. Visors are field installed. Visors are painted to match fixture housing unless otherwise specified.

Ordering Information: Indicate a "V" in the Options section of the part number. (Sample Catalog #: PLS-CF60-SI-120-1C-W-V)

• MOUNTING DETAIL

Heavy gauge metal tabs allow mounting to any ceiling type. Toolless adjustment of tabs allows for easy field adjustment of luminaire for a clean fit to sheet rock and layin ceilings

Metal tabs easily bend to enabling luminaire to adapt to bar hangers from either direction

After luminaire is installed, aluminum frame easily mounts to luminaire cleanly with torsion springs.

