

For Indoor Lighting Applications

**CONSTRUCTION** Extruded aluminum housing, die-cast gasketed end caps. Luminaire head mechanically attaches to cold rolled steel recessed box in one of four adjustable positions.

**REFLECTOR** Highly reflective specular anodized aluminum.

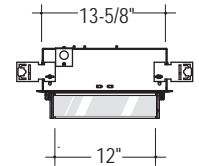
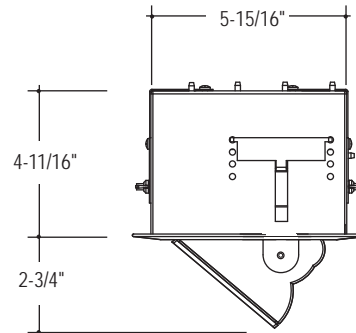
**LENS** Micro-prismatic tempered glass and die-formed aluminum trim (spring secured) for tool-less lamp access.

**ELECTRICAL** Standard 120/277 volt integral electronic ballast with a power factor greater than 90% and less than 15% THD.

**MOUNTING** Fully rotatable head mounts to structure at ceiling.

**FINISH** Standard powder-coat white textured painted finish. Consult factory for custom color and finishes.

**LABELS** UL and cUL Listed and approved for dry/damp location.



(1) 39W T6, G12 (1) 100W T6, G12  
(1) 70W T6, G12 (1) 150W T6, G12

**LUMINAIRE SPECIFICATION**

Sample Catalog #: PS-M150G-SI-120-1C-W-V

P_-	M_	SI-	---	1_-	W-	---	
PRODUCT	LAMPS / LENGTH	MOUNTING	VOLTAGE	CIRCUITING	FINISH	OPTIONS	
PS- Peak indoor luminaire, <b>Smooth</b> Housing, dry/damp label	LAMP M39G- (1) 39W T6, G12 M70G- (1) 70W T6, G12 M100G- (1) 100W T6, G12 M150G- (1) 150W T6, G12	LENGTH 12" 12" 12" 12"	INTEGRAL BALLAST SI- Ceiling Semi-Recessed (electronic only)	120- 120 V 277- 277 V 347- 347 V <sup>1</sup> UNV- UNV (120/277)	1C- Single Circuit <sup>2</sup>	W- Matte White	Q- Quartz Restrike <sup>2</sup> B- Baffle <sup>3</sup> V- Visor <sup>3</sup>
PR- Peak indoor luminaire, <b>Ribbed</b> Housing, dry/damp label							

<sup>1</sup> Not all lamping and ballast options available. Consult factory.

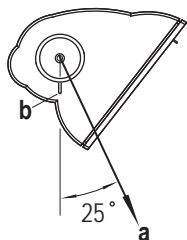
<sup>2</sup> Some Peak configurations will not accommodate all electrical options. Consult factory.

<sup>3</sup> Color will match housing unless otherwise specified.

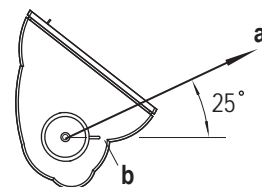
**AIMING**

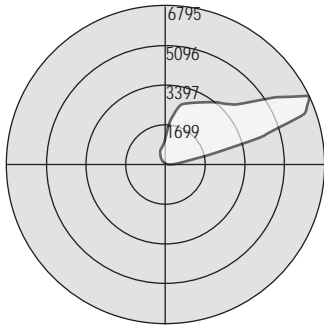
Fixture achieves optimal beam angle (a) when "aiming notch" (b) aligns with horizontal or vertical axis. Luminaire head rotates and locks for easy field adjustability.

**To light the wall**



**To light the ceiling**





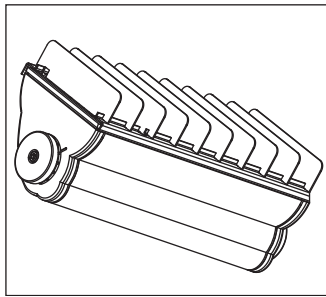
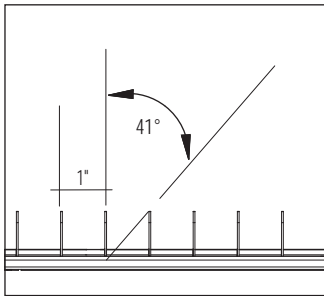
Test # JTL300030  
 Catalog # PS-M150G  
 Total Luminaire Efficiency = 65.00%

Zone	Lumens	%Lamp	%Fixt
0-30	0	0	0
0-40	0	0	0
0-60	.04	0	0
0-90	89.1	.6	1
90-120	3915.9	28	43
90-130	5513.2	39.4	60.6
90-150	7756.6	55.4	85.2
90-180	9015.2	64.4	99
0-180	9104.3	65	100

	0	45	90	135	180
0	0	0	0	0	0
5	0	0	0	0	0
15	0	0	0	0	0
25	0	0	0	0	0
35	0	0	0	0	0
45	0	0	0	0	0
55	0	.21	0	0	0
65	0	.17	0	0	0
75	14	.09	.02	0	0
85	249	151	.87	0	0
90	361	349	15	0	0
95	552	791	91	.03	0
105	3215	3875	338	23	.17
115	6584	4734	624	101	49
125	4746	3305	851	177	129
135	3596	3086	1033	270	192
145	3283	2940	1107	428	278
155	2949	2848	1186	574	498
165	2630	2354	1162	688	623
170	2235	1941	1160	750	675

FEATURES AND OPTIONS

● EXTERNAL BAFFLE

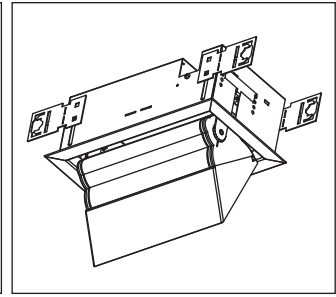
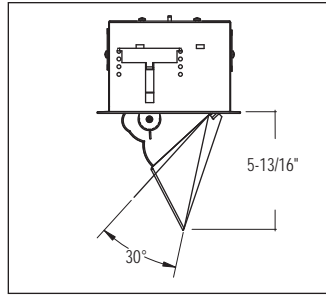


**Application:** External Baffle controls glare and reduces light output by 15%. Recommended when lengthwise shielding of lamp is required.

**Construction:** Straight baffles are high reflective white painted aluminum blades. Blade height is 1-1/8" and spaced 1" on center. Baffles are factory installed and can be easily removed for lamp replacement.

**Ordering Information:** Indicate "B" in the Options section of the part number. (Sample Catalog #: PR-M70G-SI-120-1C-W-B).

● VISOR



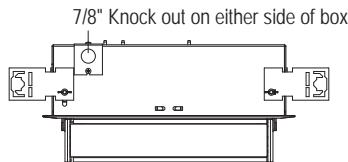
**Application:** Provides 30 degrees of shielding with no interference to peak beam angle. Recommended when glare from the lens or reflector must be shielded.

**Construction:** Solid formed visor mounts to fixture with 2 screws. Visors are field installed. Visors are painted to match fixture housing unless otherwise specified.

**Ordering Information:** Indicate a "V" in the Options section of the part number. (Sample Catalog #: PR-M70G-SI-120-1C-W-V)

● MOUNTING DETAIL

Heavy gauge metal tabs allow mounting to any ceiling type. Toolless adjustment of tabs allows for easy field adjustment of luminaire for a clean fit to sheet rock and lay-in ceilings.



Metal tabs easily bend enabling luminaire to adapt to bar hangers from either direction.



After luminaire is installed, aluminum frame easily mounts to luminaire cleanly with torsion springs.

