

CONSTRUCTION Extruded aluminum housing, die-cast gasketed end caps.

REFLECTOR Highly reflective specular anodized aluminum.

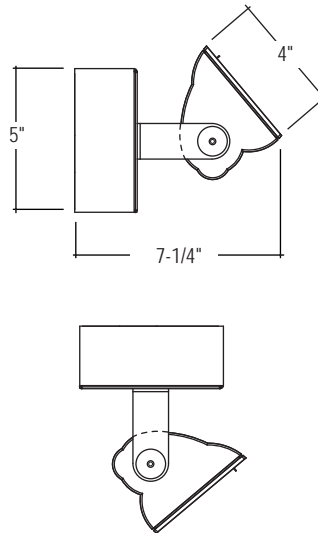
LENS Micro-prismatic tempered glass and die-formed aluminum trim (spring secured) for tool-less lamp access.

ELECTRICAL Standard 120/277 volt integral electronic ballast with a power factor greater than 90% and less than 15% THD. Consult factory for battery packs and dimming. Each ballast provided with disconnects to meet luminaire disconnect code requirement.

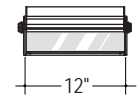
MOUNTING Fully rotatable head mounts to structure either at ceiling or wall.

FINISH Standard powder-coat white textured painted finish. Consult factory for custom color and finishes.

LABELS UL and cUL Listed and approved for dry/damp location.



For Indoor Lighting Applications



(1) 26W CFL
(1) 32W CFL
(1) 42W CFL

LUMINAIRE SPECIFICATION

Sample Catalog #: PS-CF26-YI-120-1C-W-W

P_-	CF__-	YI-	___-	1_-	__-	__
PRODUCT	LAMPS / LENGTH	MOUNTING	VOLTAGE	CIRCUITING	FINISH	OPTIONS
PS- Peak indoor luminaire, Smooth Housing, dry/damp label	LAMP LENGTH CF26- (1) 26W CFL 12" CF32- (1) 32W CFL 12" CF42- (1) 42W CFL 12"	INTEGRAL BALLAST YI- Yoke Integral	120- 120 V 277- 277 V UNV- UNV (120/277)	1C- Single Circuit 1D- Single Circuit with Dimming ¹ 1B- Single Circuit with Battery Pack ¹	W- Matte White S- Metallic Silver BR- Bronze CC- Custom Color	B- Baffle ² V- Visor ²

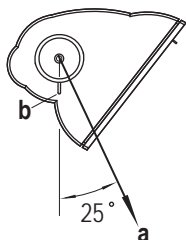
¹Some Peak configurations will not accommodate all electrical options. Consult factory.

²Color will match housing unless otherwise specified.

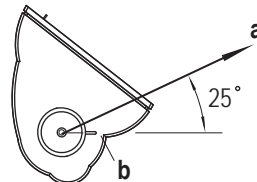
AIMING

Fixture achieves optimal beam angle (a) when "aiming notch" (b) aligns with horizontal or vertical axis. Luminaire head rotates and locks for easy field adjustability.

To light the wall

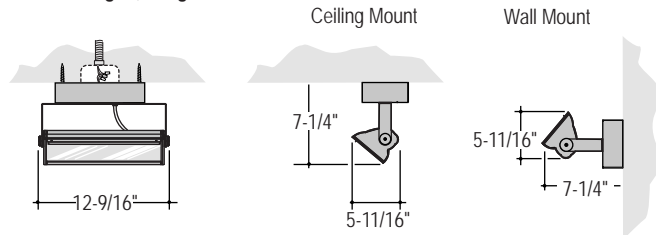


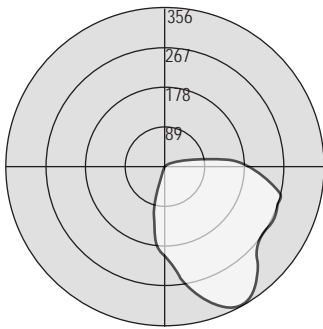
To light the ceiling



MOUNTING DIMENSION

YI - Yoke Integral, Integral Ballast





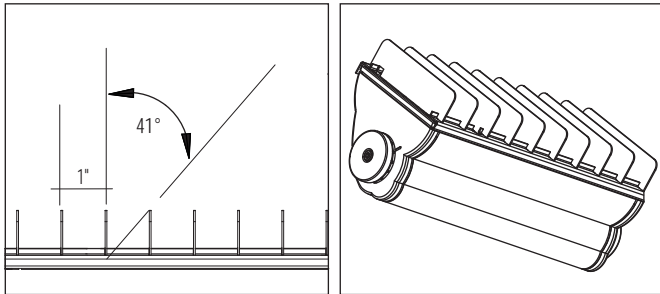
Test # 18949
 Catalog # PS-CF26
 Total Luminaire Efficiency = 52.70%

Zone	Lumens	%Lamp	%Fixt
0-30	165.7	9.2	17.5
0-40	276.5	15.4	29.2
0-60	530.4	29.5	55.9
0-90	871.2	48.4	91.9
90-120	74.8	4.2	7.9
90-130	75.8	4.2	8
90-150	76.5	4.3	8.1
90-180	76.9	4.3	8.1
0-180	948.1	52.7	100

	0	45	90	135	180
0	204	204	204	204	204
5	231	225	206	189	181
15	302	273	204	140	94
25	352	318	199	63	15
35	345	325	185	20	10
45	291	335	157	11	3
55	265	328	123	3	1
65	273	306	82	1	0
75	269	275	29	1	0
85	218	215	6	1	0
90	190	178	1	0	0
95	154	121	1	0	0
105	68	28	1	0	0
115	14	4	0	0	0
125	4	1	0	0	0
135	1	1	0	0	0
145	1	1	0	0	0
155	0	0	0	0	0
165	0	0	0	0	0
170	0	0	0	0	0

FEATURES AND OPTIONS

• EXTERNAL BAFFLE

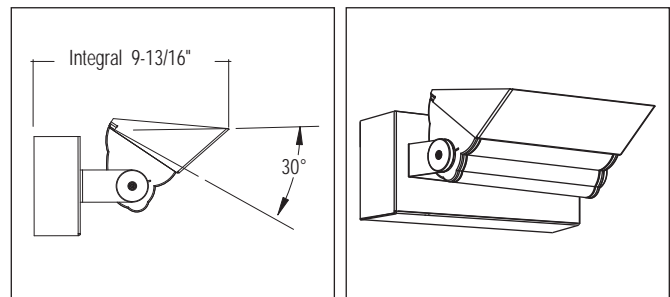


Application: External Baffle controls glare and reduces light output by 15%. Recommended when lengthwise shielding of lamp is required.

Construction: Straight baffles are high reflective white painted aluminum blades. Blade height is 1-1/8" and spaced 1" on center. Baffles are factory installed and can be easily removed for lamp replacement.

Ordering Information: Indicate "B" in the Options section of the part number. (Sample Catalog #: PS-CF26-YI-120-1C-W-B).

• VISOR

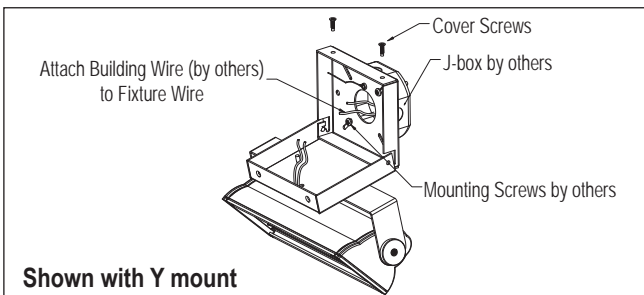


Application: Provides 30 degrees of shielding with no interference to peak beam angle. Recommended when glare from the lens or reflector must be shielded.

Construction: Solid formed visor mounts to fixture with 2 screws. Visors are field installed. Visors are painted to match fixture housing unless otherwise specified.

Ordering Information: Indicate a "V" in the Options section of the part number. (Sample Catalog #: PS-CF26-YI-120-1C-W-V)

• MOUNTING DETAIL



Assembly: Fixture remains captive to the mounting plate allowing for hands free wire connection. Once wired, swing fixture back into place and secure with the hardware provided. See installation instructions when installing fixtures. Specification sheets are not to be used as installation instructions.