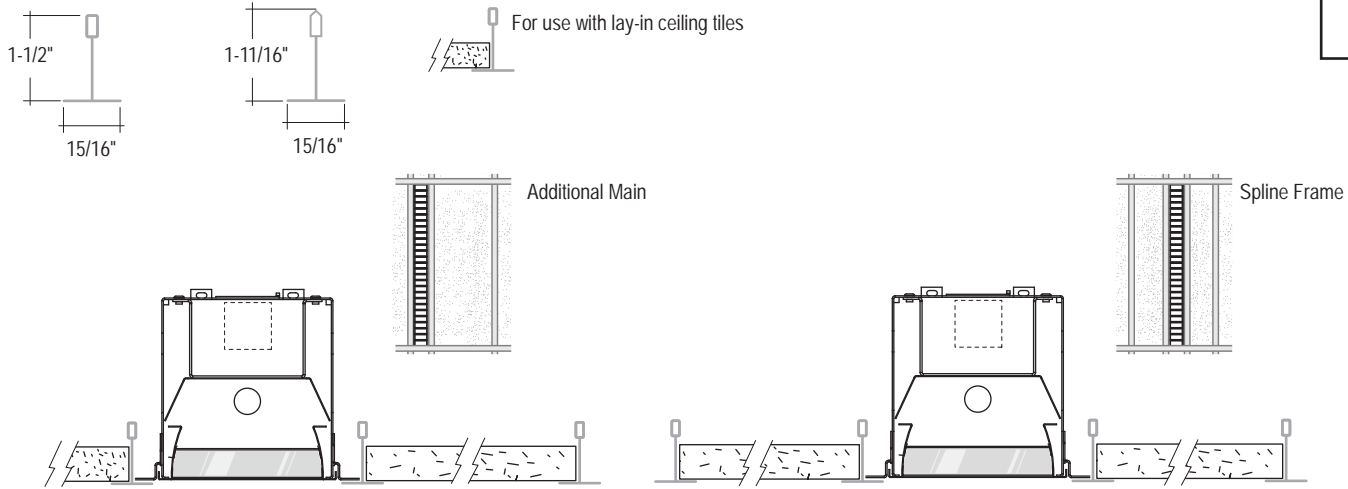


G1 1" Ceiling Grid

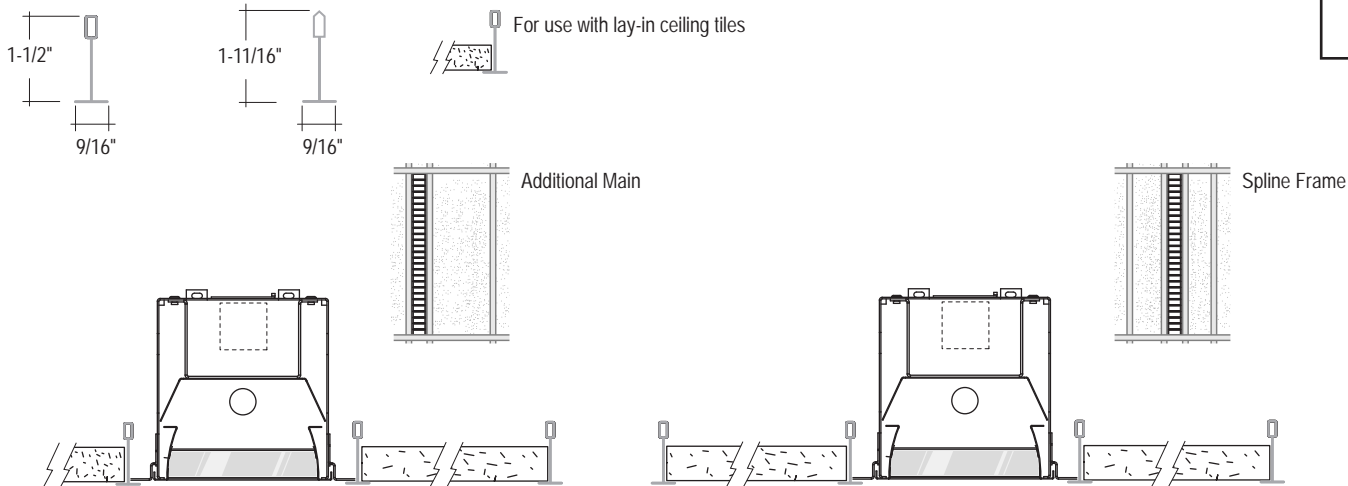
Check here for G1 Option



Individual units (2', 3', 4', 6', 8') units cannot be joined. All end trims are factory installed. Individual units are notes as G1G on spec sheets.

G9 9/16" Ceiling Grid

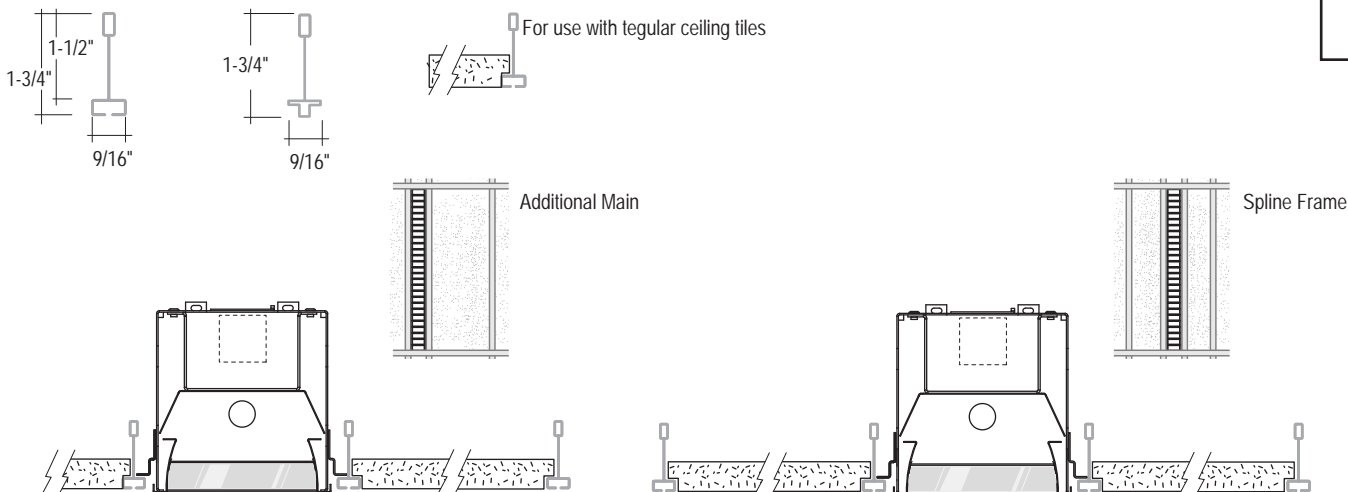
Check here for G9 Option



Individual units (2', 3', 4', 6', 8') units cannot be joined. All end trims are factory installed. Individual units are notes as G9G on spec sheets.

GS Screw Slot Ceiling Grid

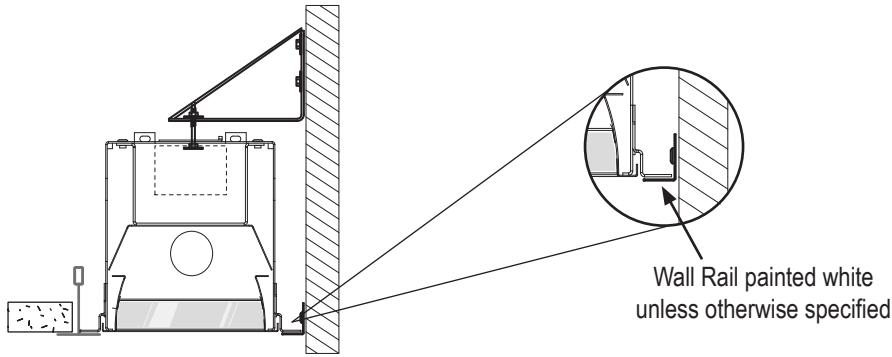
Check here for GS Option



Individual units (2', 3', 4', 6', 8') units cannot be joined. All end trims are factory installed. Individual units are notes as GSG on spec sheets.

PM Perimeter Mount Grid Ceiling

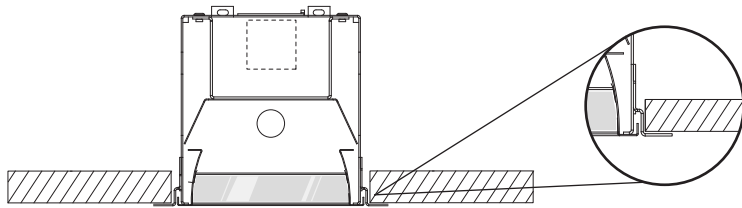
Check here for PM Option



Individual units (2', 3', 4', 6', 8') units cannot be joined. All end trims are factory installed. Individual units are notes as G1G, G9G and GSG on spec sheets.

FL Standard 1/2" Flange for Inaccessible Ceiling

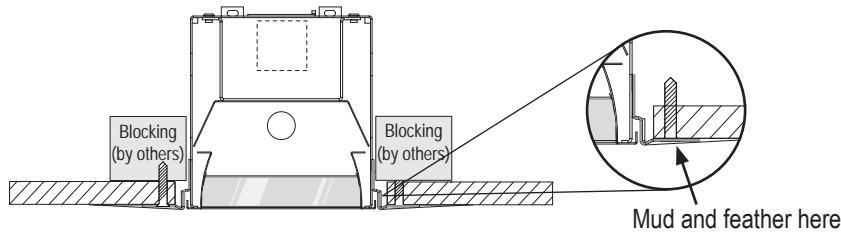
Check here for FL Option



Individual units (2', 3', 4', 6', 8') units cannot be joined. All end trims are factory installed. Individual units are notes as FLF on spec sheets.

SF Spackle Flange for Inaccessible Ceiling

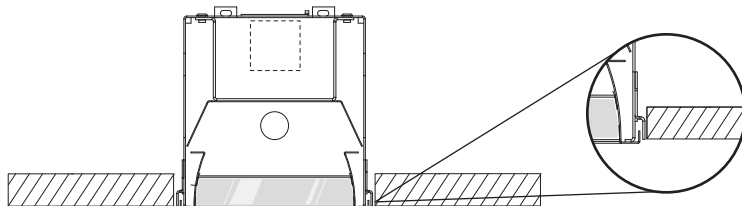
Check here for SF Option



Individual units (2', 3', 4', 6', 8') units cannot be joined. All end trims are factory installed. Individual units are notes as SFS on spec sheets. Blocking should not be placed at fixture ends.

NF Flangeless for Metal Pan Ceiling / Millwork

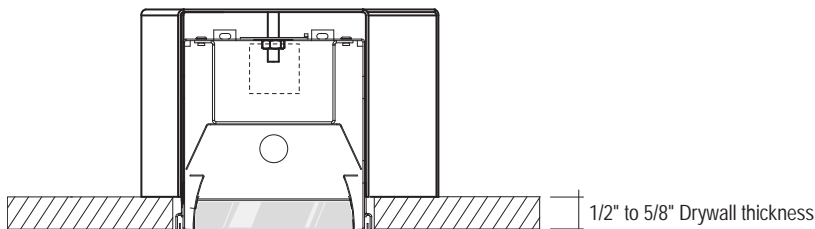
Check here for NF Option



Individual units (2', 3', 4', 6', 8') units cannot be joined. All end trims are factory installed. Individual units are notes as NFN on spec sheets.

RC Rotating Crossbar for 1/2" to 5/8" Drywall

Check here for RC Option



Rotating Crossbar available in conjunction with FL mounting option only.
Individual units (2', 3', 4', 6', 8') units cannot be joined. All end trims are factory installed. Individual units are notes as RCR on spec sheets.