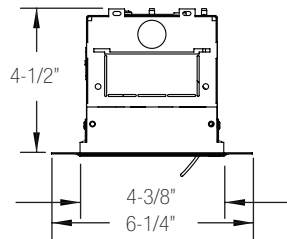


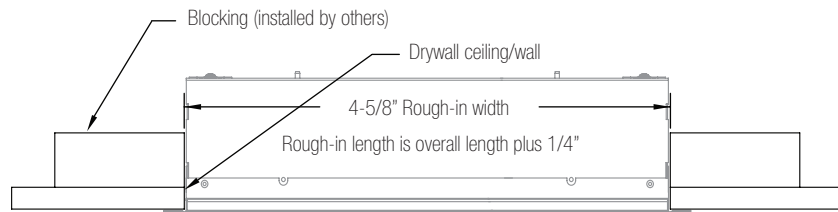
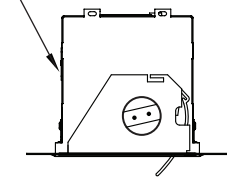
# EDGE<sub>WW</sub> T5/T5HO Spackle Flange Mounting

**\* DO NOT SCREW INTO SIDE OF HOUSING \***

Front View



Wall Side

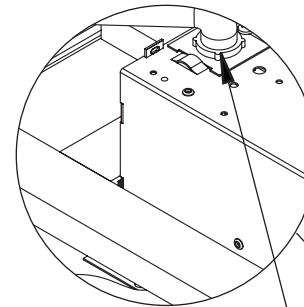


Opening can not be smaller than 4-1/2". An "End Trim" may be used as a gauge for ensuring minimum width. Always install lenses during installation and louvers AFTER ALL finishing work has been completed.

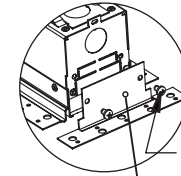
## Step 1:

### Layout/ Dimensions

1. Layout fixtures and blocking locations.
2. Layout and install junction boxes and whip out below ceiling level.
3. Install blocking to structure using rough in dimensions.
4. Install ceiling material.
5. Cut out the fixture/row rough-in.



1/2" Trade Conduit Connector (by others)



#8-32 self tapping screws  
End trim  
(End Trims come installed on individual units)

Access cover screw (S-8-32X 1/4-PH-P-T/L)

Access cover (K-E2-01-02)

1/2" Trade K.O

End 1/2" Trade K.O

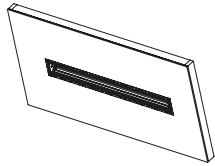
## Step 2:

### Making the Connections

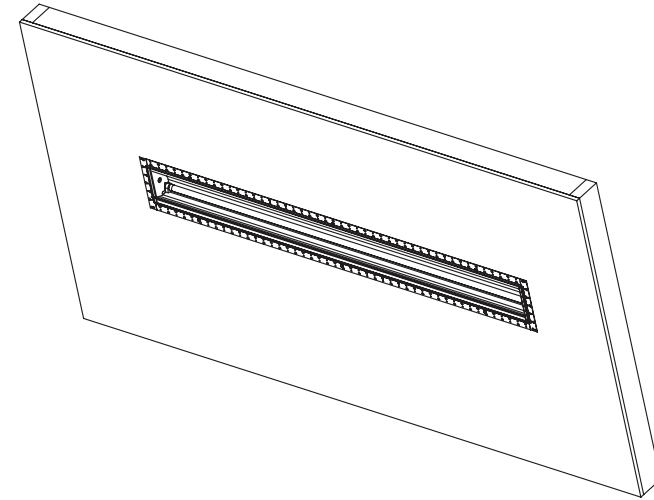
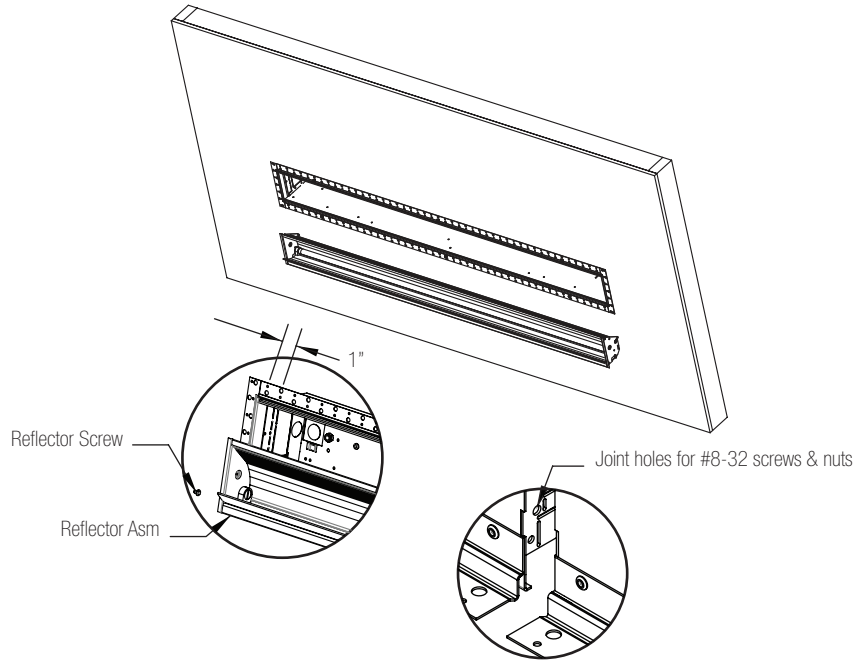
1. Attach end trim to end fixtures using #8-32 self tapping screws.
2. Remove applicable access cover.
3. Attach conduit to access cover using 1/2" trade fittings.
4. Make electrical connections inside fixture.
5. Replace access cover.



1. This product must be installed in accordance with applicable installation and electrical codes by a professional familiar with the construction and operation of the product.
2. Minimum 90°C supply conductors
3. All electrical connections must be performed by a certified electrician to applicable local and national electrical codes.
4. Fixtures must be mounted directly to structure.



# EDGE<sub>WW</sub> T5/T5HO Spackle Flange Mounting



## Step 3: Mounting

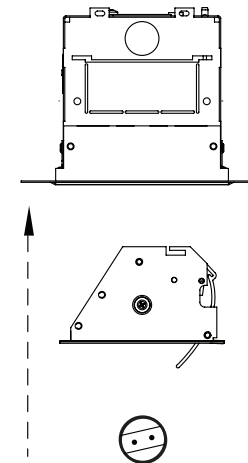
1. Remove reflector assembly
2. Position fixture in roughed and blocked in opening.
3. Mount fixture in place using provided holes in flange, at least on screw approximately every 6" along both sides and two in the end flange.

## For Continuous Runs

1. Remove reflector assembly.
2. Remove end knock-outs between fixtures.
3. Lift and rotate fixtures into place and secure fixture using mounting hardware.
4. Mount fixture by screwing through the holes in the flange to the wood blocking. Using at least one screw approximately every 6" along all sides.
5. Secure fixtures together using supplied #8-32 screws and nuts.

## Step 4: Finishing

1. Replace reflector
2. Install lamp(s)
3. Install lens or louver.



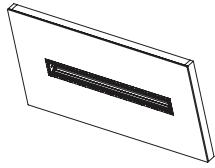
Fixture

Wall Wash Assembly

Lamp



1. This product must be installed in accordance with applicable installation and electrical codes by a professional familiar with the construction and operation of the product.
2. Minimum 90°C supply conductors
3. All electrical connections must be performed by a certified electrician to applicable local and national electrical codes.
4. Fixtures must be mounted directly to structure.



# EDGE<sub>WW</sub> T5/T5HO Spackle Flange Mounting

## Row Configuration Notes:

EOR/IND fixtures are less than nominal in length.

Row configurations shown are standard.

Non-standard row configurations may be specified for your project and will be shown on a project submittal. Overall row lengths and rough-in lengths will be shown on the submittal. Standard rows for project typically do not have submittal drawings.

All fixtures are modular and may be used in any location (except special circuits)

Special circuit fixtures should be installed in the locations specified.

In general, installation is assumed to use the largest fixture first, followed by the next largest, etc.

Add 1/4" to overall row length for rough-in.

Battery fixtures have test switch and indicator light remoted (conduit and J-Box by others).

All fixtures through-wired for specified circuits. Quick connects provided between fixtures.

### Nominal Fixture Length (bold) Versus Actual Length (T5 & T8)

| Fixture | 2'  | 3'  | 4'  | 6'  | 8'  |
|---------|-----|-----|-----|-----|-----|
| BOR/INT | XX  | XX  | 48" | 72" | 96" |
| EOR/IND | 23" | 35" | 47" | 71" | 95" |

Note:

BOR - Beginning of Run  
INT - Intermediate Fixture  
EOR - End of Run  
IND - Individual Fixture

## Row Configuration Chart

| Nominal Row Length | Actual Row Length | Fixture Units in Row Configuration |
|--------------------|-------------------|------------------------------------|
| 2 ft               | 1' 11"            | 23'                                |
| 3 ft               | 2' 11"            | 35'                                |
| 4 ft               | 3' 11"            | 47'                                |
| 5 ft               | 4' 10" †          | 36' + 23'                          |
| 6 ft               | 5' 11"            | 71'                                |
| 7 ft               | 6' 11"            | 48' + 35'                          |
| 8 ft               | 7' 11"            | 95'                                |
| 9 ft               | 8' 11"            | 72' + 35'                          |
| 10 ft              | 9' 11"            | 72' + 47'                          |
| 11 ft              | 10' 11"           | 96' + 35'                          |
| 12 ft              | 11' 11"           | 96' + 47'                          |
| 13 ft              | 12' 11"           | 72' + 48' + 35'                    |
| 14 ft              | 13' 11"           | 96' + 71'                          |
| 15 ft              | 14' 11"           | 96' + 48' + 35'                    |
| 16 ft              | 15' 11"           | 96' + 95'                          |
| 17 ft              | 16' 11"           | 96' + 72' + 35'                    |
| 18 ft              | 17' 11"           | 96' + 72' + 47'                    |
| 19 ft              | 18' 11"           | 96' + 96' + 35'                    |
| 20 ft              | 19' 11"           | 96' + 96' + 47'                    |
| 21 ft              | 20' 11"           | 96' + 72' + 48' + 35'              |
| 22 ft              | 21' 11"           | 96' + 96' + 71'                    |
| 23 ft              | 22' 11"           | 96' + 96' + 48' + 35'              |
| 24 ft              | 23' 11"           | 96' + 96' + 95'                    |
| 25 ft              | 24' 11"           | 96' + 96' + 72' + 35'              |

† 5' fixture uses extended end trim to sit on grid.

**Fixtures are manufactured so that the Fixture Label (located on reflector) is closest to the start of the row. Subsequent fixtures are installed with the label closest to the previous fixture. (Build the row from left-to-right. Install each fixture with label facing left.)**

1. This product must be installed in accordance with applicable installation and electrical codes by a professional familiar with the construction and operation of the product.
2. Minimum 90°C supply conductors
3. All electrical connections must be performed by a certified electrician to applicable local and national electrical codes.
4. Fixtures must be mounted directly to structure.

