

**CONSTRUCTION** Extruded aluminum housing and reflector, zinc plated fasteners and hardware, formed galvanized steel and aluminum bracketing.

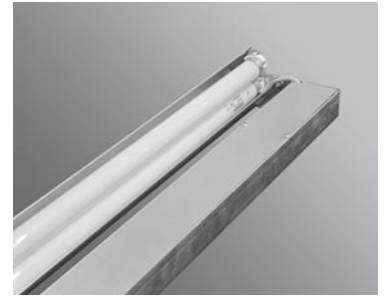
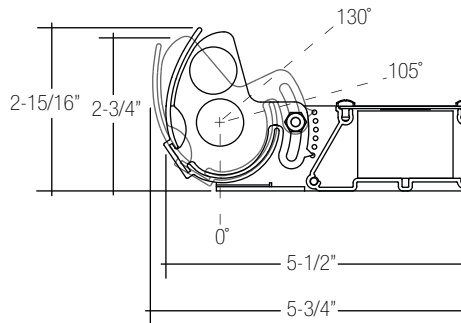
**REFLECTOR** Highly reflective adjustable extruded aluminum reflector with two optional factory aimed positions as shown. Reflector may be easily field adjusted to a range of positions (See back page for more details).

**ELECTRICAL** Standard instant start universal volt (120/277) electronic ballast with less than 10% THD. Through wiring with quick connects standard. Standard single circuit. Each ballast provided with disconnects to meet luminaire disconnect code requirement.

**MOUNTING** Cove 105 mounts to architectural cove structure by others. For best results follow "Typical Cove Design Guidelines".

**FINISH** Unpainted aluminum natural metal finish.

**LABELS** UL and cUL Listed, approved for dry/damp location unless otherwise specified.



**\*Two Standard Reflector Settings**-Specify one of two settings (C105 or C130) to ensure proper illumination of ceiling surfaces regardless of the ceiling pitch. Note dimensional differences (see back page for more details)

**LUMINAIRE SPECIFICATION**

Sample Catalog #: C105-2T8-26'-120-1C-N

C	2T8-	---	---	N-	---	
HOUSING	LAMPS	LENGTH	VOLTAGE	CIRCUITING <sup>2</sup>	FINISH	OPTIONS
C105- Cove reflector setting with low peak candela angle.  C130- Cove reflector setting with high peak candela angle.	2T8- (2) T8 lamp	<b>Individual Units</b> 2- 2' T8: (2) 17 Watt 3- 3' T8: (2) 25 Watt 4- 4' T8: (2) 32 Watt 6- 6' T8: (4) 25 Watt 8- 8' T8: (4) 32 Watt  <b>Continuous Runs (8+)</b> xx'- Specify nominal overall row length in 1' increments	120- 120 Volt 277- 277 Volt 347- 347 Volt <sup>1</sup> UNV- UNV <sup>1</sup> (120/277)	1C- Single Circuit 2C- Dual Circuit 1D- Single Circuit Dimming <sup>2</sup> 2D- Dual Circuit Dimming <sup>2</sup> 1E- Single Circuit with Emergency Circuit <sup>2</sup> 2E- Dual Circuit with Emergency Circuit <sup>2</sup> 1B- Single Circuit with Battery Pack <sup>2</sup> 2B- Dual Circuit with Battery Pack <sup>2</sup>	N- None (Natural metal finish)	QS- Quick Ship <sup>2</sup>  <sup>1</sup> 347 volt and UNV not available with battery packs. <sup>2</sup> Some Cove 105 configurations will not accommodate all options. Consult factory. <sup>3</sup> Quick Ship includes T8, Universal Voltage, natural finish, single and dual circuit.

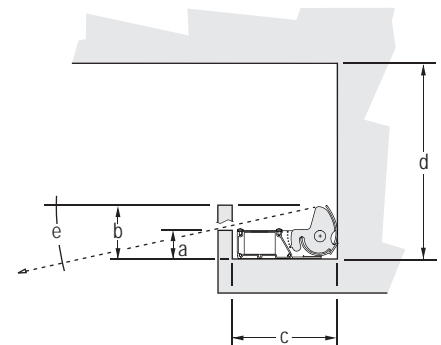
**COMPONENTS**

Cove 105 components easily join to form an array of continuous run lengths for a broad seamless "wash" of light. Power enters the first unit of a run and then feeds through each subsequent module.

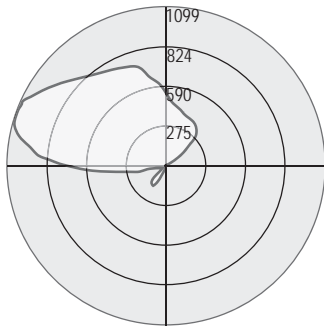


**TYPICAL COVE DESIGN GUIDELINES**

For best results specify a smooth high-reflectance painted surface or material with a matte finish



- a Valance Height (Min) 1.5" (recommended for best results)
- b Valance Height (Max) 3.0" (recommended for very large rooms with low cove heights to prevent lamp image visibility)
- c Cove Interior Width C105-5.75" min, C130-6" min
- d Overall Cove Height 12"min/18" preferred
- e Lamp Image Cut-Off 0°-12.5° dependent on valance height



Test #202238  
 Catalog # C105-2T8-4'-X-N  
 Total Luminaire Efficiency = 51.40%

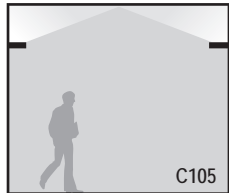
Zone	Lumens	%Lamp	%Fixt
0-30	14.23	0.2	0.5
0-40	38.79	0.7	1.3
0-60	75.04	1.3	2.5
0-90	271.69	4.7	9
90-120	1172.7	20.2	38.7
90-130	1591.98	27.4	52.5
90-150	2308.62	39.8	76.2
90-180	2758.7	47.6	91
0-180	3030.39	52.2	100

0	45	90	135	180	225	270	315	360
15	0	0	0	0	4	25	5	0
25	0	0	0	0	50	112	51	0
35	2	0	2	0	2	100	117	102
45	9	3	9	3	9	81	9	82
55	18	9	16	9	18	32	0	32
65	25	16	23	15	24	13	0	13
75	25	20	19	19	25	20	24	20
85	53	22	18	22	51	223	393	221
90	121	18	15	18	120	485	663	484
95	169	7	3	7	169	661	856	660
105	216	21	0	21	215	793	1083	800
115	281	101	25	102	280	761	1084	764
125	348	239	167	234	348	725	973	726
135	409	312	324	316	406	707	860	705
145	451	349	364	352	452	697	799	699
155	489	387	380	384	492	695	747	692
165	517	420	405	425	518	653	716	650
175	516	481	461	491	528	606	591	587
180	529	529	529	529	529	529	529	529

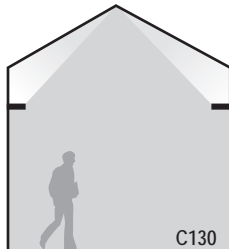
FEATURES AND OPTIONS

• Two Standard Reflector Settings

Two optional factory settings offer lighting design flexibility.



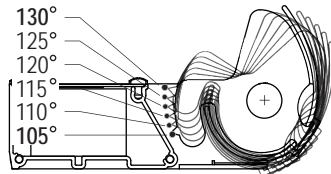
>C105- Standard "Low Beam" Setting ideal for the majority of horizontal ceiling cove applications with an approximate peak candela angle of 105 degrees.



>C130-Specify the "high-beam" setting (130 degree peak candela) to evenly "graze" pitched ceiling surfaces.

• Field Adjustability

For fine-tuning in the field the Cove 105 adjusts and locks to all degrees between 105 and 130. Aiming notches on the end-bracket offer visual aiming reference on 5 degree increments.



• Easy Installation

Simply remove the pre-aimed lightweight aluminum Cove 105 from the box, rest it into the cove and secure to structure with a couple of screws. Each continuous run requires only one power connection.



• Quick Connect Through Wiring

All Cove 105 sections are pre-wired for "through-wiring" with "plug-in" quick connects that greatly reduce installation time.



STANDARD ROW CONFIGURATION

Pinnacle Architectural Lighting utilizes standard row configurations for continuous runs. Please consult factory if a project requires non-standard row configurations.

Individual Length	Nominal T8 Row Length																																																										
	2	3	4	5	6	7	8	9	10	11	12	13	14	15	16	17	18	19	20	21	22	23	24	25	26	27	28	29	30	31	32	33	34	35	36	37	38	39	40																				
2	1			1																																																							
3		1		1		1		1		1		1		1		1		1		1		1		1		1		1		1		1		1		1		1		1																			
4			1		1		1		1		1		1		1		1		1		1		1		1		1		1		1		1		1		1		1		1																		
6				1		1		1		1		1		1		1		1		1		1		1		1		1		1		1		1		1		1		1		1																	
8					1		1		1		1		1		1		2		1		1		2		2		2		3		2		2		3		3		3		4		3		3		4		4		3		4		4		4		5