

**CONSTRUCTION** Extruded aluminum housing and reflector, zinc plated fasteners and hardware, formed galvanized steel and aluminum bracketing.

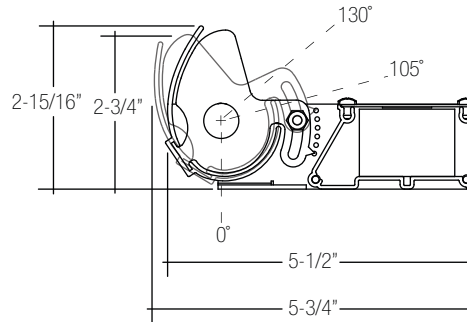
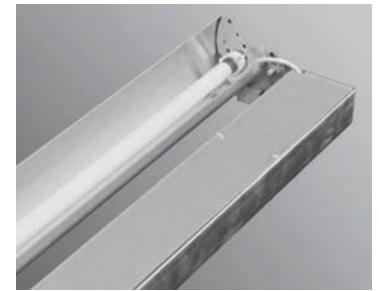
**REFLECTOR** Highly reflective adjustable extruded aluminum reflector with two optional factory aimed positions as shown. Reflector may be easily field adjusted to a range of positions (See back page for more details).

**ELECTRICAL** Standard programmed start UL listed Class P, T5 electronic, Sound Rated A, thermally protected, High Power Factor ballasts less than 10% THD, Universal voltage (120/277) with 50/60Hz operation. Through wiring with quick connects standard. Standard single circuit. Each ballast provided with disconnects to meet luminaire disconnect code requirement.

**MOUNTING** Cove 105 mounts to architectural cove structure by others. For best results follow "Typical Cove Design Guidelines".

**FINISH** Unpainted aluminum natural metal finish.

**LABELS** UL and cUL Listed, approved for dry/damp location unless otherwise specified.



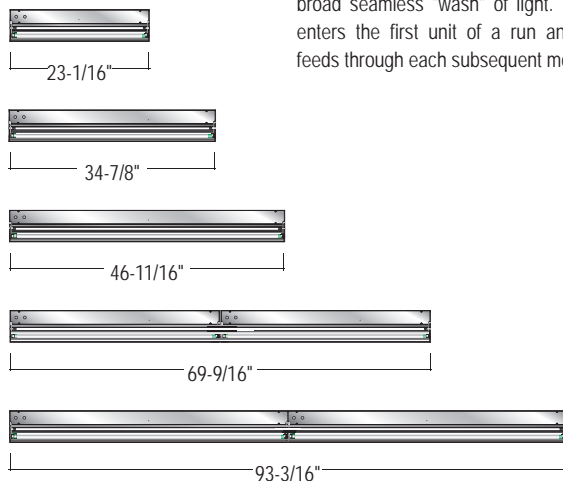
**\*Two Standard Reflector Settings**-Specify one of two settings (C105 or C130) to ensure proper illumination of ceiling surfaces regardless of the ceiling pitch. Note dimensional differences (see back page for more details)

**LUMINAIRE SPECIFICATION**

Sample Catalog #: C105-1T5HO-26'-120-1C-N

C	1T5				N	
HOUSING	LAMPS	LENGTH	VOLTAGE	CIRCUITING <sup>2</sup>	FINISH	OPTIONS
C105- Cove reflector setting with low peak candela angle.  C130- Cove reflector setting with high peak candela angle.	1T5- (1) T5 lamp 1T5HO- (1) T5HO lamp	<b>Individual Units</b> 2- 2' T5: (1) 14Watt T5HO: (1) 24 Watt 3- 3' T5: (1) 21 Watt T5HO: (1) 39 Watt 4- 4' T5: (1) 28 Watt T5HO: (1) 54 Watt 6- 6' T5: (2) 21 Watt T5HO: (2) 39 Watt 8- 8' T5: (2) 28 Watt T5HO: (2) 54 Watt  <b>Continuous Runs (8+)</b> xx <sup>1</sup> - Specify nominal overall row length in 1' increments	120- 120 Volt 277- 277 Volt 347- 347 Volt <sup>1</sup> UNV- UNV <sup>1</sup> (120/277)	1C- Single Circuit 1D- Single Circuit Dimming <sup>2</sup> 1E- Single Circuit with Emergency Circuit <sup>2</sup> 1B- Single Circuit with Battery Pack <sup>2</sup>	N- None (Natural metal finish)	QS- Quick Ship <sup>3</sup>
				<sup>1</sup> 347 volt and UNV not available with battery packs. <sup>2</sup> Some Cove 105 configurations will not accommodate all options. Consult factory. <sup>3</sup> Quick Ship includes T5, T5HO, Universal Voltage, natural finish, single and dual circuit.		

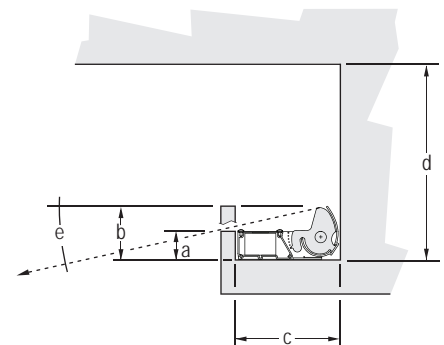
**COMPONENTS**



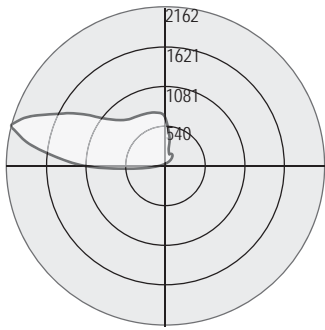
Cove 105 components easily join to form an array of continuous run lengths for a broad seamless "wash" of light. Power enters the first unit of a run and then feeds through each subsequent module.

**TYPICAL COVE DESIGN GUIDELINES**

For best results specify a smooth high-reflectance painted surface or material with a matte finish



- a Valance Height (Min) 1.5" (recommended for best results)
- b Valance Height (Max) 3.0" (recommended for very large rooms with low cove heights to prevent lamp image visibility)
- c Cove Interior Width C105-5.75" min, C130-6" min
- d Overall Cove Height 2T5-15"min/21"preferred, 2T5HO-21"min/30"preferred
- e Lamp Image Cut-Off 0°-12.5° dependent on valance height



Test #202235  
 Catalog #C105-1T5HO-4'-X-N  
 Total Luminaire Efficiency = 77.20%

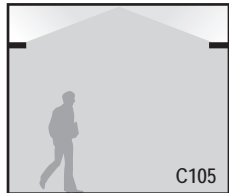
Zone	Lumens	%Lamp	%Fixt
0-30	0	0	0
0-60	2.89	0.1	0.1
90-120	1749.88	35	50.9
90-130	2155.19	43.1	62.7
90-150	2793.27	55.9	81.3
90-180	3251.74	65	94.6
0-180	3436.42	68.7	100

	0	45	90	135	180	225	270	315	360
35	0	0	1	0	0	0	0	0	0
45	0	2	5	2	0	0	0	0	0
55	0	4	8	4	0	0	0	0	0
65	0	6	10	6	0	1	0	1	0
75	3	4	2	4	3	3	15	2	3
85	13	1	0	1	13	229	509	227	13
90	100	2	0	2	102	716	1086	713	100
95	207	3	0	3	210	1116	1500	1117	207
105	178	10	0	9	176	1378	2162	1371	178
115	237	38	3	39	237	978	1664	973	237
125	322	110	73	110	324	731	1166	736	322
135	414	162	173	159	418	679	850	682	414
145	508	181	202	183	516	692	788	694	508
155	593	225	175	228	597	725	758	721	593
165	664	402	296	395	661	734	745	735	664
175	706	595	572	590	692	714	726	721	706
180	724	724	724	724	724	724	724	724	724

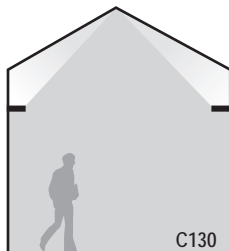
FEATURES AND OPTIONS

• Two Standard Reflector Settings

Two optional factory settings offer lighting design flexibility.



>C105- Standard "Low Beam" Setting ideal for the majority of horizontal ceiling cove applications with an approximate peak candela angle of 105 degrees.



>C130-Specify the "high-beam" setting (130 degree peak candela) to evenly "graze" pitched ceiling surfaces.

• Easy Installation

Simply remove the pre-aimed lightweight aluminum Cove 105 from the box, rest it into the cove and secure to structure with a couple of screws. Each continuous run requires only one power connection.



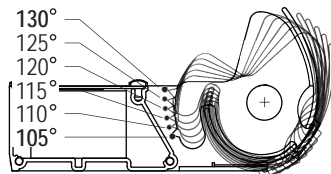
• Quick Connect Through Wiring

All Cove 105 sections are pre-wired for "through-wiring" with "plug-in" quick connects that greatly reduce installation time.



• Field Adjustability

For fine-tuning in the field the Cove 105 adjusts and locks to all degrees between 105 and 130. Aiming notches on the end-bracket offer visual aiming reference on 5 degree increments.



STANDARD ROW CONFIGURATION

Pinnacle Architectural Lighting utilizes standard row configurations for continuous runs. Please consult factory if a project requires non-standard row configurations.

Individual Length	Nominal T5/T5HO Row Length																																									
	2	3	4	5	6	7	8	9	10	11	12	13	14	15	16	17	18	19	20	21	22	23	24	25	26	27	28	29	30	31	32	33	34	35	36	37	38	39	40			
2	1			1																																						
3		1		1		1		1		1		1		1		1		1		1		1		1		1		1		1		1		1		1		1		1		
4			1			1			1		1		1		1		1		1		1		1		1		1		1		1		1		1		1		1		1	
6					1			1		1		1		1		1		1		1		1		1		1		1		1		1		1		1		1		1		1
8							1			1		1		1		1		1		1		1		1		1		1		1		1		1		1		1		1		1